

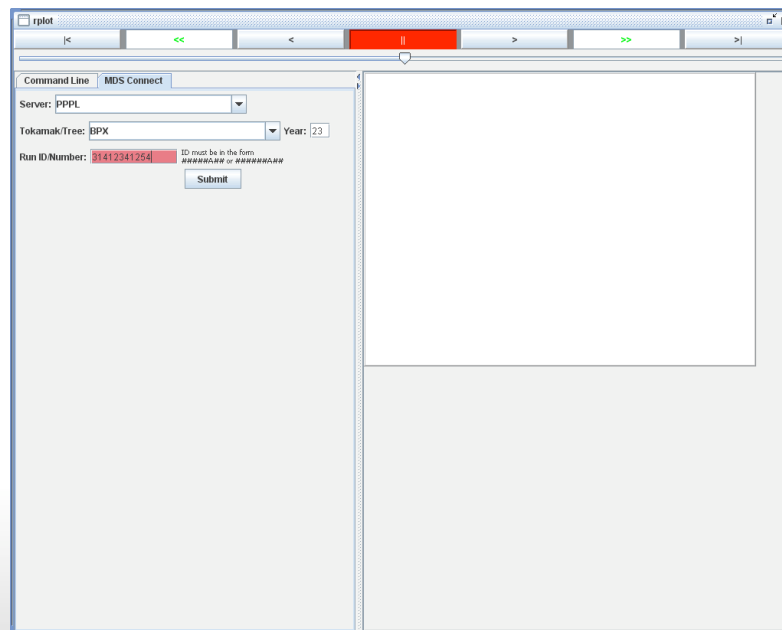
# ELVis rplot Service New Features

by Ben Bariteau



# Features Added

- Command-line command stack arrow key control
- MDS+ data connect panel
- Script listing and editing



# Command Stack Arrow Key Control

```
CURRENT DIRECTORY:  DEFAULT

[OLD VALUE:  "      "]
RFPLOT* MAIN:  ENTER RUN ID (MAX 8 CHARS) OR 0 TO QUIT
t

mds server name:  TRANSPGRID.PPPL.GOV
mds tree name:
tokamak.year:
mds pulse number:      0
options:
S - set MDS server name
T - set MDS tree name
Y - identify run by tok.yy & runid
N - identify run by MDS pulse number
Q - quit (will prompt for runid if necessary)

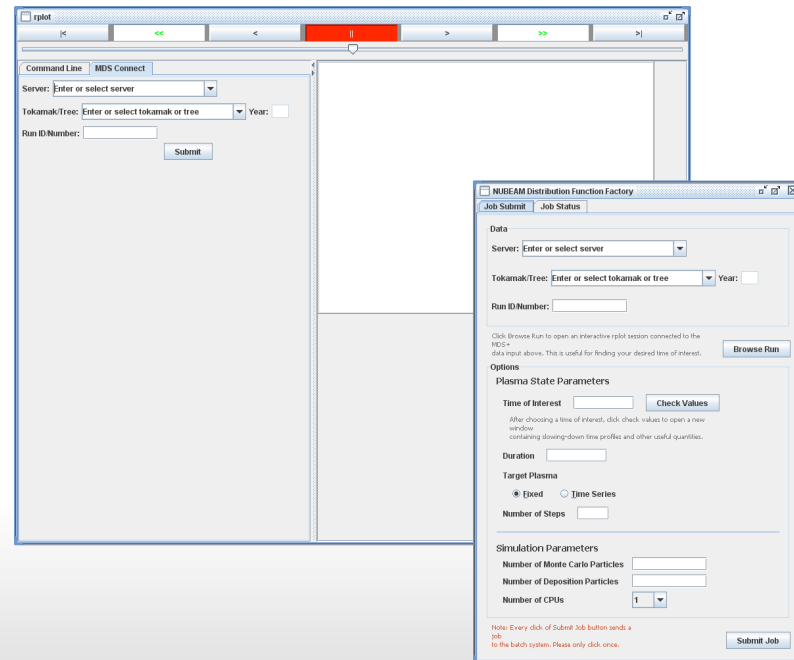
*** select "Y" or "N" to enable mds+ access.

RFPLOT: mds control option:
ptemp
↑
ptemp
↑
t
↓
ptemp
↓
```

- Up key remembers last commands
- Down key remembers previous command
- Standard behavior of most shells; convenience for power users

# MDS+ Data Connect

- MDSPanel used for connecting to MDS+ data
- Used by rplot and NUBEAM Function Factory
- Can be used with future services



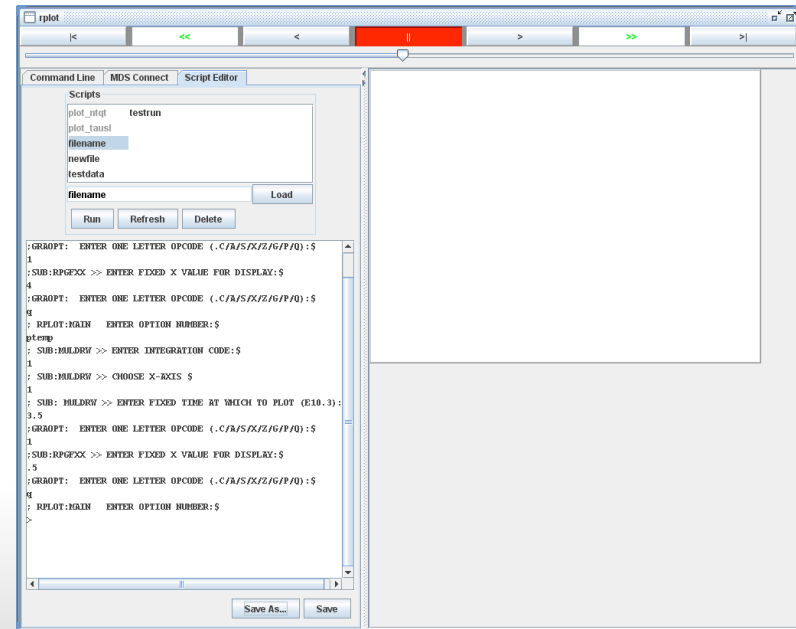
# MDSPanel Features

The screenshot displays three panels of the MDSPanel interface, each with a 'Submit' button. The top panel has 'Server' set to 'Enter or select server', 'Tokamak/Tree' set to 'Enter or select tokamak or tree', and 'Year' as an empty field. The middle panel has 'Server' set to 'MIT', 'Tokamak/Tree' set to 'CMOD', and 'Year' as an empty field. The bottom panel has 'Server' set to 'PPPL', 'Tokamak/Tree' set to 'BPX', and 'Year' set to '23'. The 'Run ID/Number' field in the bottom panel contains '31412341254' and is highlighted in red. A tooltip message next to it reads: 'ID must be in the form #####A## or #####A##'. At the bottom of the interface, there is a black banner with white text: '\*RPLLOT\* MAIN: ENTER RUN ID (MAX 8 CHARS) OR 0 TO QUIT' and a red URL: 't s transpgrid.pppl.gov y NSTX q 124662A02'.

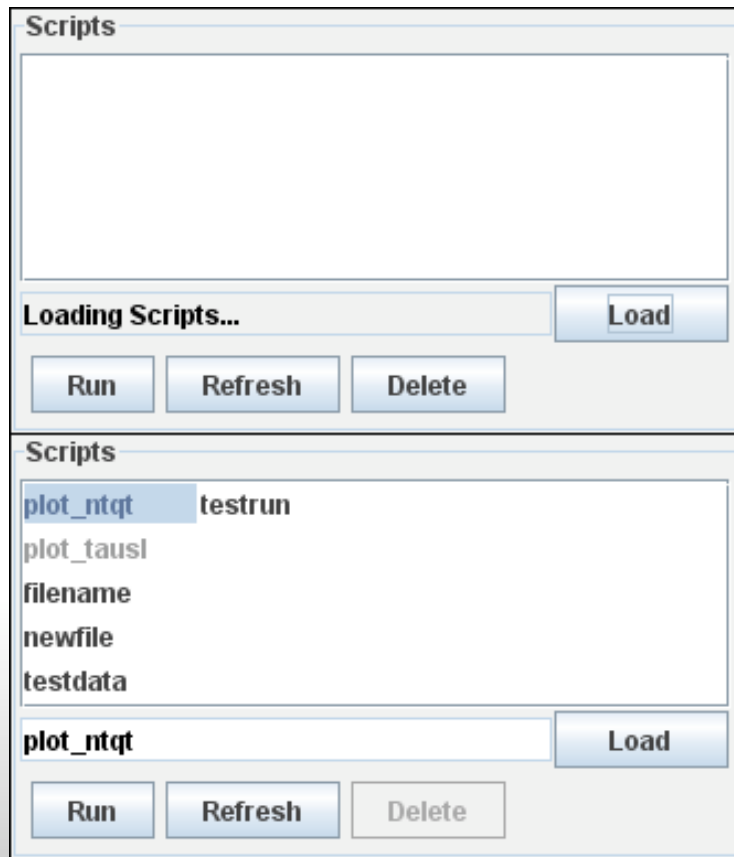
- Run ID and year format filtering
  - Contextual based on server
- Tokamak filtering
- Fields allow for custom tokamaks/trees and servers

# Script Listing and Editing

- UREAD scripts for rplot are used for automation
- Scripts follow user input
- Users can make mistakes
- Editor panel allows user to change scripts



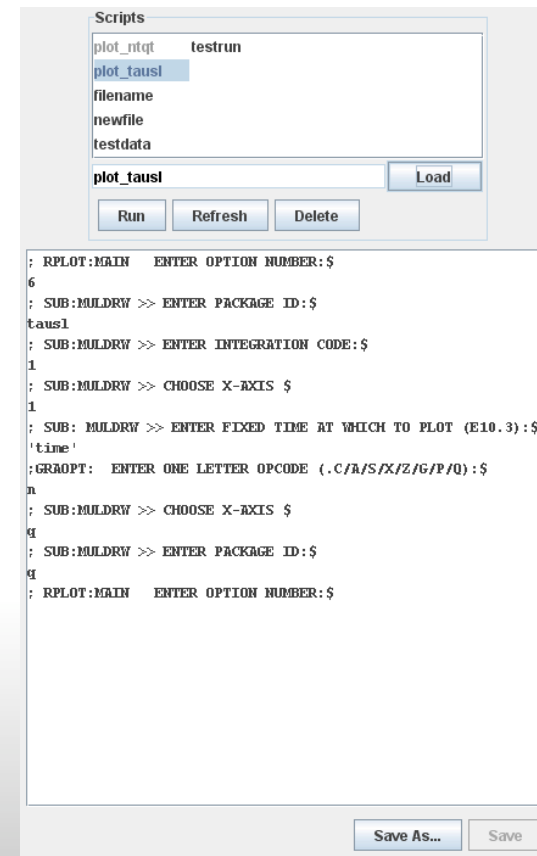
# Script Loading



- The top panel is seen at startup of rplot
- After a few seconds this panel is populated with scripts
- You can select scripts and then load them
- Grayed-out scripts are read only

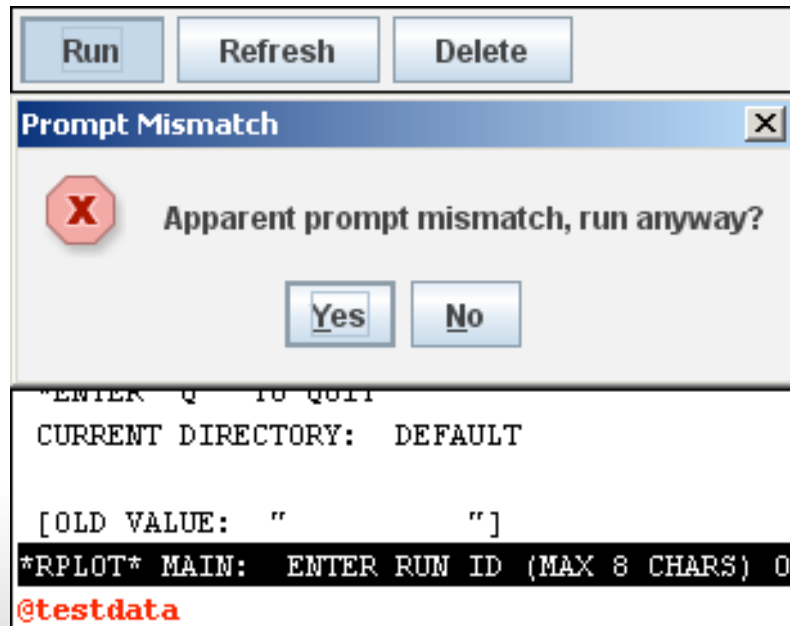
# Script Editing

- Scripts can be loaded by a double-click or by using the “Load” button
- Read only scripts can be edited by can only use the “Save As” button
- Normal scripts can use both buttons





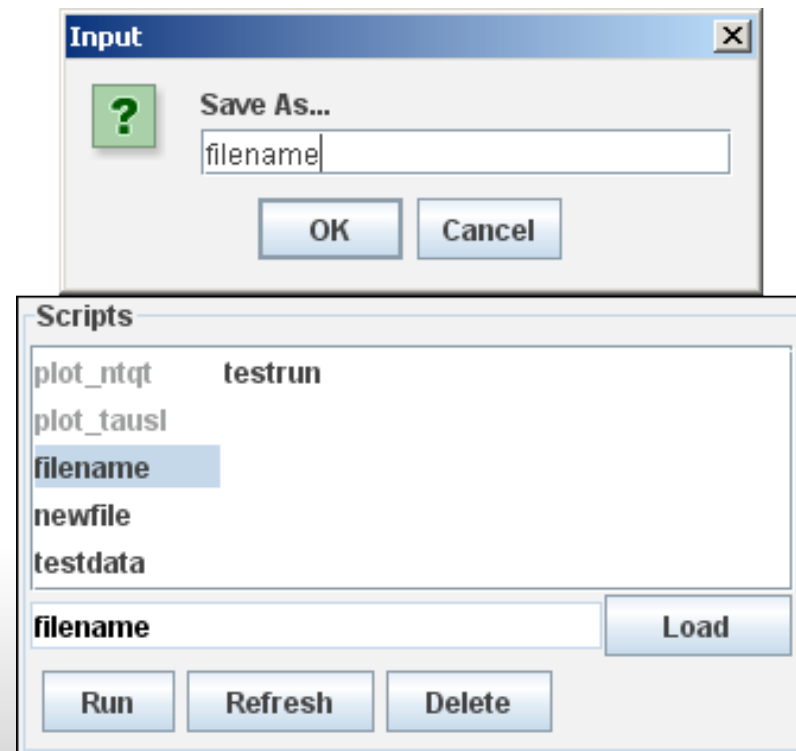
# Using the “Run” Button



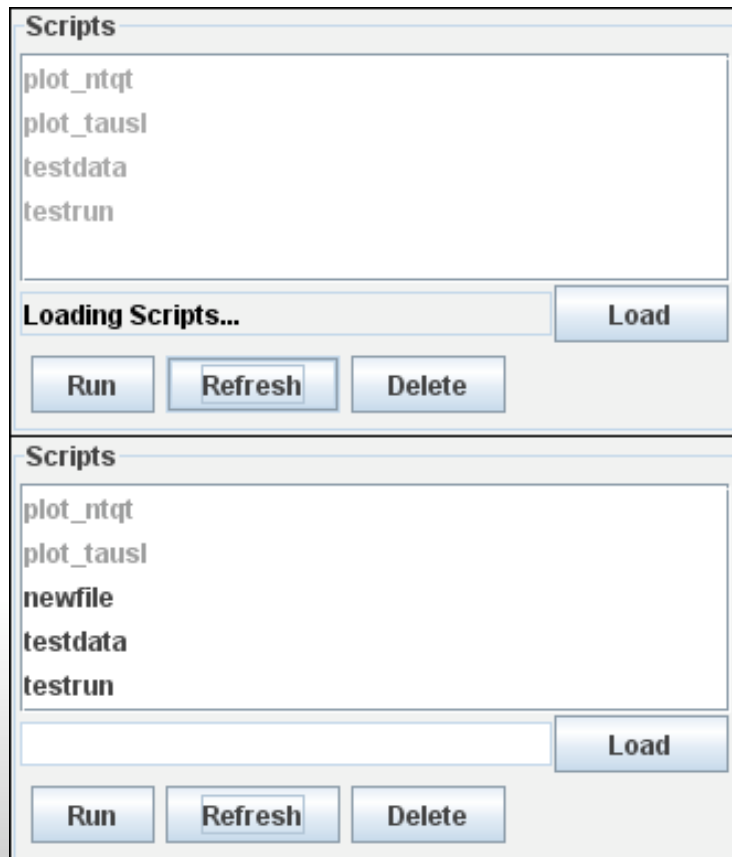
- The Run button can be used to run the selected script
- This will check the first prompt of the script against the current prompt of the command line
- If the prompts do not match, a message will show, which will allow the user to override
- A command to run the script is then put into the command line

# The “Save As” Button

- The Save As button pops up a dialog box to put in the new filename
- Saves the file on the server, and then adds the new file to the script listing area



# The Refresh Button



- Refreshing scripts reloads the list of scripts
- Hit the refresh button, wait a few seconds, and the file list will reload

# The Delete Button

- The delete button allows for users to delete their scripts
- Allows for users to manage scripts more easily
- Disabled for read-only scripts

