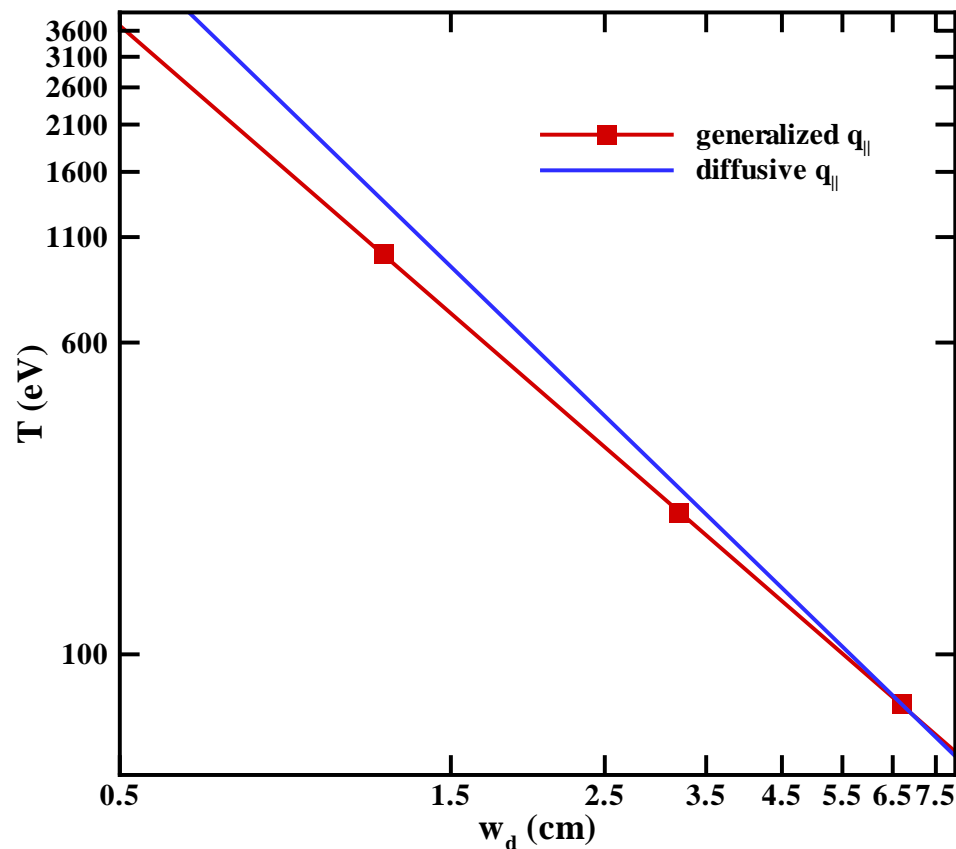


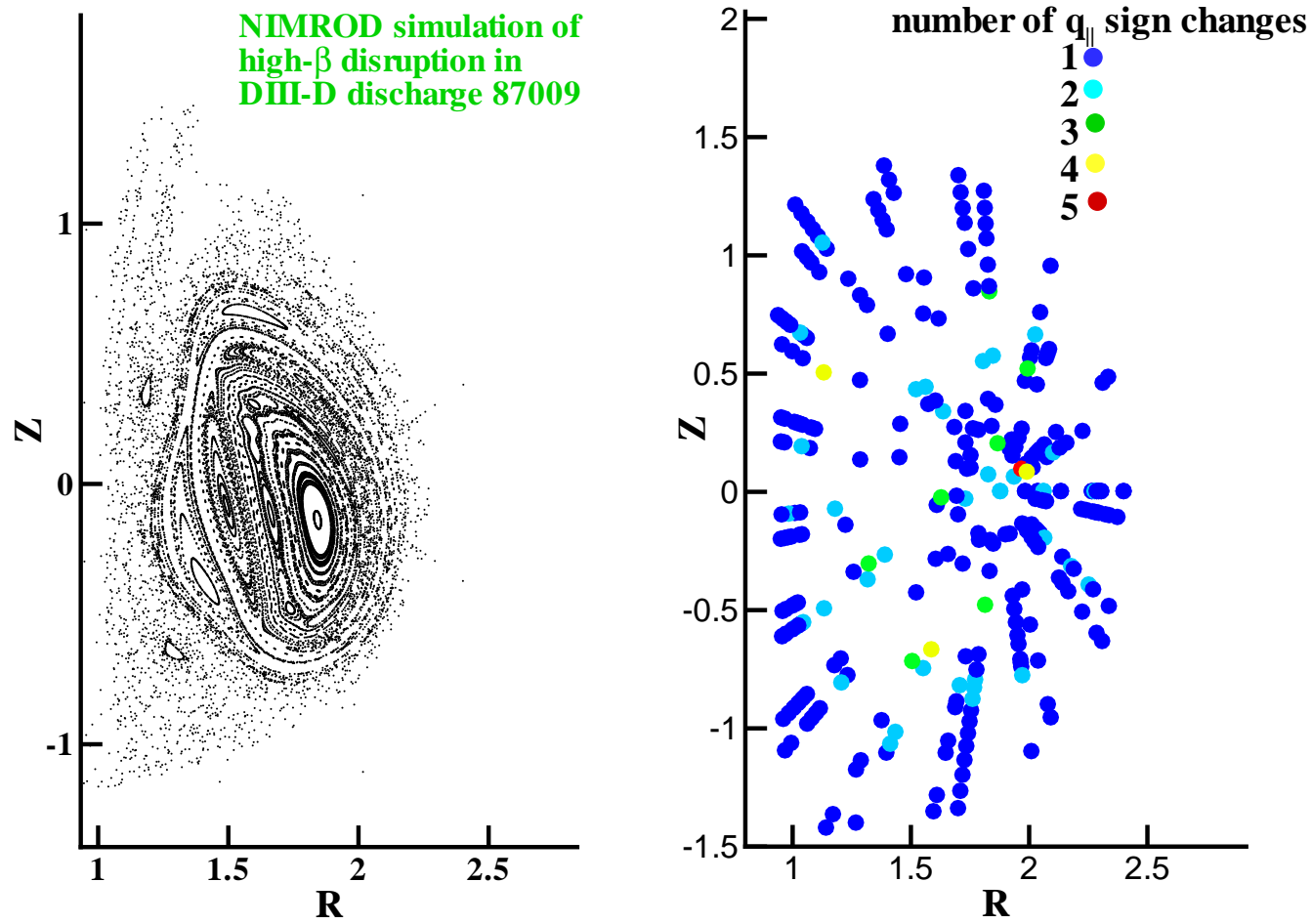
Generalized q_{\parallel} predicts more robust flattening.

- Cylindrical, diffusive analytical scaling with¹² $\kappa_{\parallel} \sim T^{5/2}$, $T \sim w_d^{-1.6}$. ^a
- Toroidal, diffusive numerical scaling¹³ $T \sim w_d^{-1.7}$. ^b
- Generalized numerical scaling $T \sim w_d^{-1.5}$.



Nonlocal q_{\parallel} useful in disruption simulations.

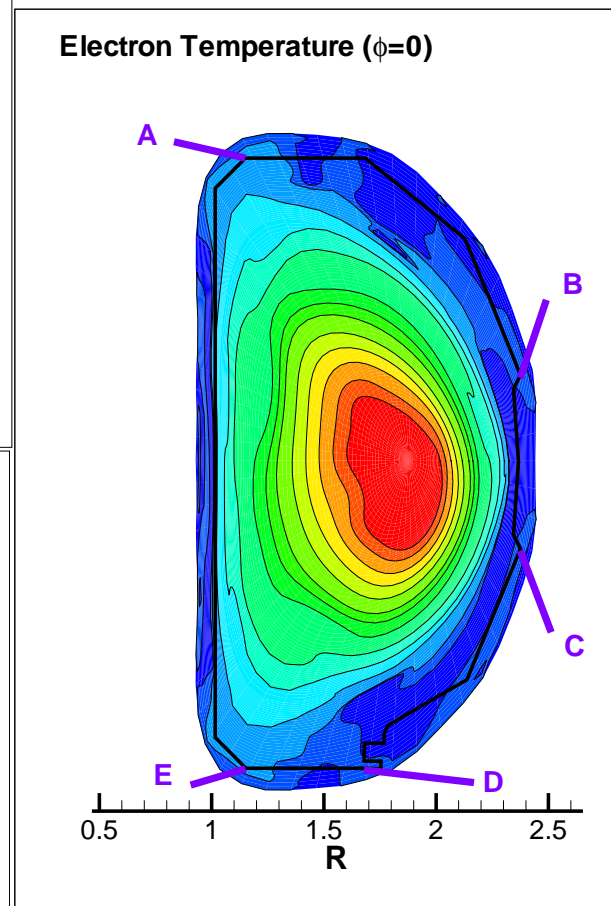
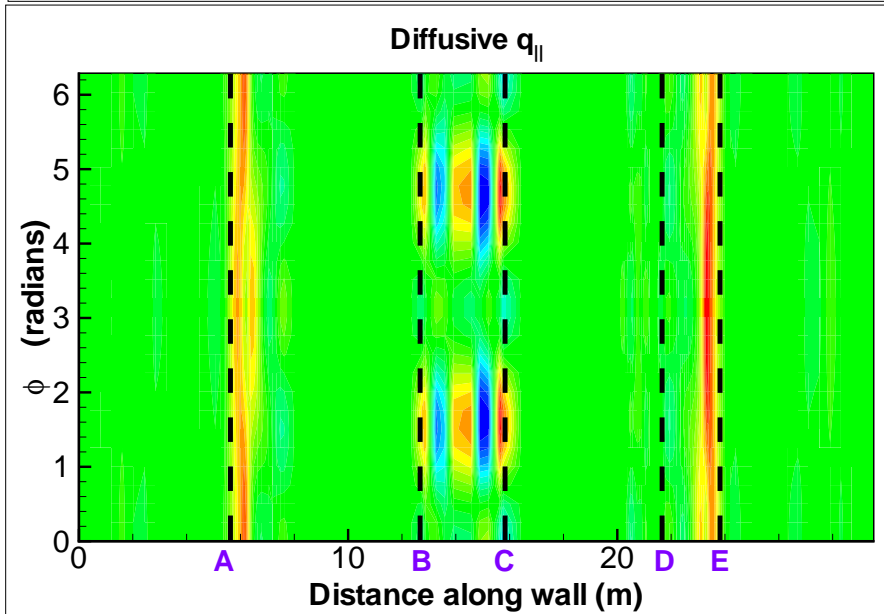
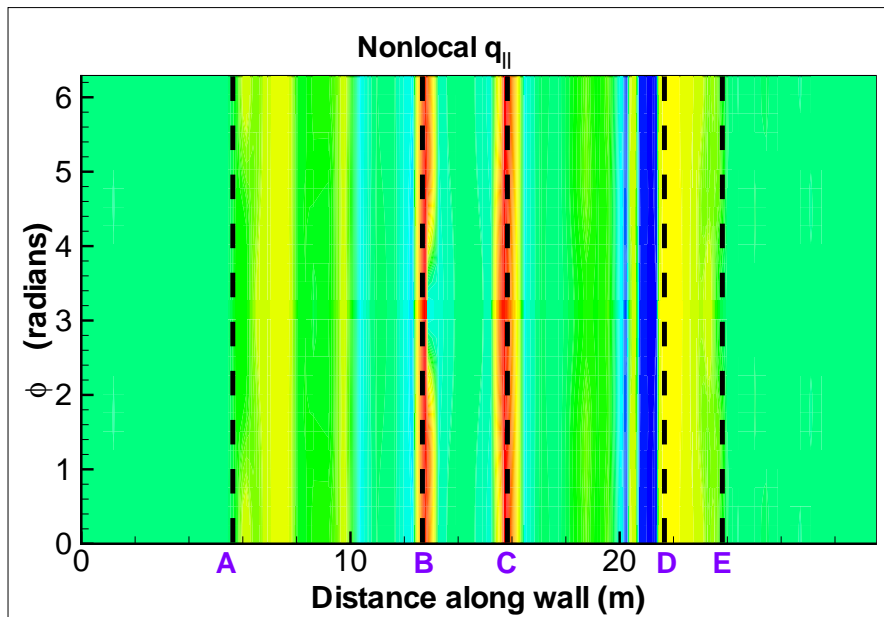
- Simulation of disruption in DIII-D shot 87009¹⁴ results in field line chaos. ^a



^a14 J. D. Callen, *et al.*, Phys. Plasmas **6**, 2963 (1999).

Nonlocal closure qualitatively different than diffusive closure.

- Heat flows rapidly along field lines hitting the wall.



Conclusion

- Developed nonlocal closures that encompass Landau, collisional, and particle trapping physics in general toroidal geometry.
- Implemented massively parallel semi-implicit approach in NIMROD code for application to high-performance, toroidal fusion experiments.
- Combination of generalized closure theory and massively parallel numerics permits simulation of parallel particle dynamics on fluid time scales.
- Scaling of $T \sim w_d^{-1.5}$ for nonlocal q_{\parallel} predicts robust flattening of temperature across magnetic islands.
- Preliminary application of nonlocal q_{\parallel} in disruption simulations reproduces qualitative features of wall heat loads.

Acknowledgments

- Collaborators:
J. D. Callen, C. C. Hegna, and C. R. Sovinec, U. of Wisconsin,
T. A. Gianakon, Los Alamos National Laboratory,
S. E. Kruger and D. D. Schnack, SAIC,
the NIMROD Team, and
the Center for Extended Macroscopic Modeling.
- This research has been supported by DOE under grant no.
DE-FG03-01ER54618.