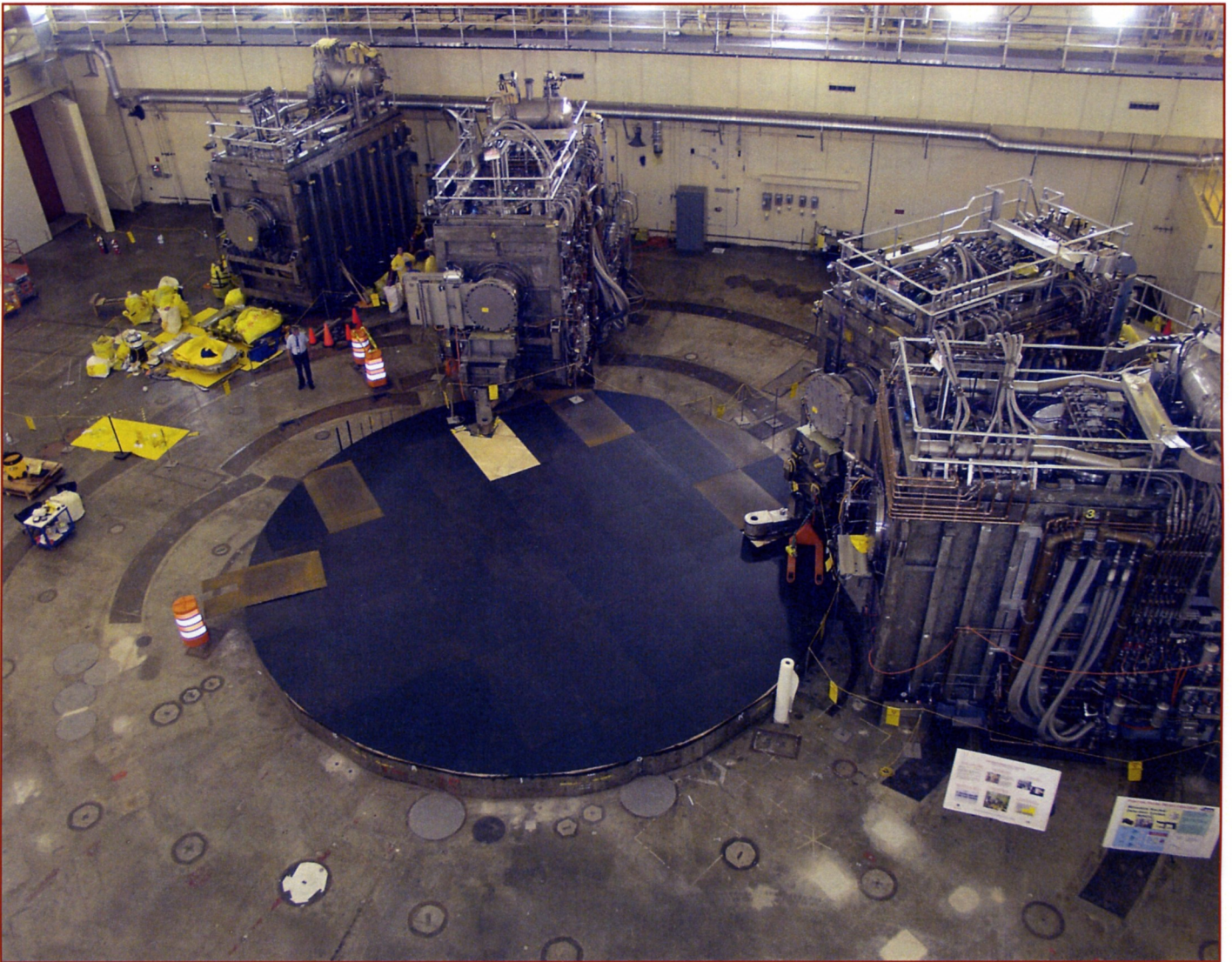


HOTLINE

The Princeton Plasma Physics Laboratory is a United States Department of Energy Facility

TFTR Removal Complete



The Tokamak Fusion Test Reactor (TFTR) Decommissioning and Decontamination Project has been successfully and safely completed on schedule and under budget. The project included approximately 145 person-years of fieldwork. A new and innovative technology, Diamond Wire Cutting, was developed and successfully utilized for the most challenging phase of the project: segmenting the TFTR vacuum vessel. Above is the former TFTR test cell. At upper left in the test cell is Project Manager Erik Perry.

Goldston Chairs New U.S. Planning Effort

PPPPL Director Rob Goldston is the chair of a newly established 18-person panel "to develop a plan with the end goal of the start of operation of a demonstration [fusion] power plant in approximately 35 years." The DOE Fusion Energy Science Advisory Committee created the panel in response to a request from DOE Office of Science Director Ray Orbach. The panel begins meeting in October and will present a final report in March. ●

Lab Commemorates 9/11



On September 11, PPPL'ers took time to reflect on the tragic events of one year ago. Some staff members stopped by the Auditorium to view news coverage of the remembrance services held at ground zero. Many observed a moment of silence at 8:46 A.M. In a gesture to honor the memory both of those who perished and of the heroes of September 11, the Laboratory placed red, white, and blue flowers in the Lobby (above). In addition, employees were invited to main campus events, including a panel discussion and a commemorative assembly. ●

Electrical Safety

Did you know that one of the most frequently violated electrical safety regulations at PPPL is the misuse of extension cords and multi-outlet power strips?

If you need more wall outlets in your work area, using more extension cords or multi-power outlets is *not* the answer. The following is a list of the most frequent electrical violations found during safety walkthroughs at PPPL:

- Extension cords used without a ground fault circuit interrupter (GFCI) at the supply end of the cord and plugged into a wall receptacle.
- Extension cords plugged into another extension cord.
- Extension cords used in place of fixed wiring.
- Extension cords plugged into multi-outlet power strips.
- Multi-outlet strips plugged into an extension cord or into another power strip. These strips must be plugged directly into a wall receptacle.
- Appliances rated above 750 watts (coffee makers, toasters, etc.) plugged into a power strip. These strips are for use with office equipment such as pencil sharpeners and computers.

If you need more outlets in your work area, please send a request via e-mail to workorder@pppl.gov. For additional information, please call Rich Borusovic, Electrical Safety, ext. 3740. ●



Hotline

Editor/Writer: Patti Wieser
Photography: Elle Starkman

Graphic Artist: Greg Czechowicz
Layout: Patti Wieser

The **HOTLINE** is issued by the Princeton Plasma Physics Laboratory, a research facility supported by the United States Department of Energy. It is primarily an internal publication. Correspondence and requests to reprint material should be directed to the Editor, PPPL HOTLINE, P.O. Box 451, Princeton, NJ 08543; Interoffice correspondence should be addressed to MS-38, LSB Bldg., C-Site; fax 609-243-2751; telephone 609-243-2757; e-mail pwieser@pppl.gov.

Health and Wellness Programs at PPPL

The interval between the end of summer and the approach of the winter holidays is an excellent time to turn your attention to your own health status. To help with that process, the Laboratory's Occupational Medicine Office will be offering a number of screening and wellness programs in the coming months. Please mark your calendars for the following:

Pneumococcal Vaccine Program — October, by appointment, at the PPPL Occupational Medicine Office.

Breast Cancer Awareness Program — Wednesday, October 16, from Noon to 1 P.M., LSB, B-318.

American Red Cross Blood Drive — Friday, October 11, from 9 A.M. to 2 P.M., by appointment, at the PPPL Firehouse.

Flu Shot Program — October and November, by appointment, at the PPPL Occupational Medicine Office.

Health Fair — Blood pressure screenings and flu shots, Tuesday, October 29, from 10 A.M. to 2 P.M., LSB Lobby. No appointment needed.

In addition, skin cancer screening and a lecture about stress post-9/11 will be offered. Announcements will be made to staff when dates for these are scheduled.

Watch for individual announcements about all health and wellness programs at PPPL or call Lee Tucker, RN, or Charlotte Howard at the Lab's Occupational Medicine Office, ext. 3200, for more information. ●



Holiday Closings

The Laboratory is closed on the following dates:

Thanksgiving Holiday **Thursday, November 28 and Friday, November 29**

Holiday Closing **Monday, December 23 through January 1 (returning to work January 2)**

The following are University Holidays:

Tuesday, December 24

Wednesday, December 25

Tuesday, December 31

Wednesday, January 1

Note: The staff has two (2) optional holidays available this year which may be used in conjunction with two (2) vacation days for the period of time PPPL is closed.

PPPL Holiday Party — Friday, December 20th at Noon

Information on paycheck availability during the period when the Laboratory is closed will be e-mailed in early December.

PPPL Picnic Time '02

P PPL staff enjoyed the picnics at the home of PPPL Director Rob Goldston and his wife, Ruth. The soirees were held in July and September. Thanks, Rob and Ruth! ●



At left, Colin McFarlane makes a shot. Above, Gary Kater chows down.



Sonja Patterson (left) and Bobbie Forcier hang the decorations.



From left, Judy Malsbury, Sue Hill, and Irving Zatz enjoy the picnic.



From left are Hans Schneider, Marty Drift, and Bob Marsala.