

Annual Picnic Rates an A+

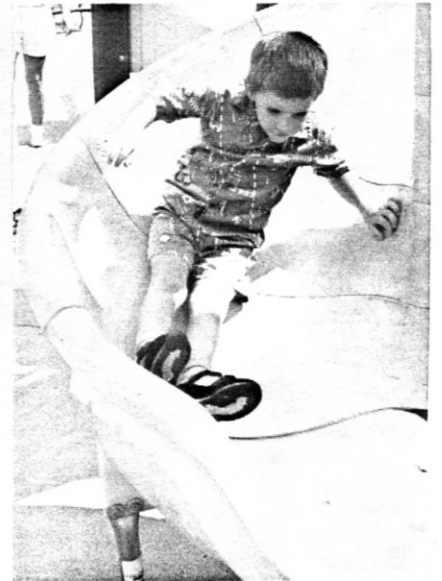
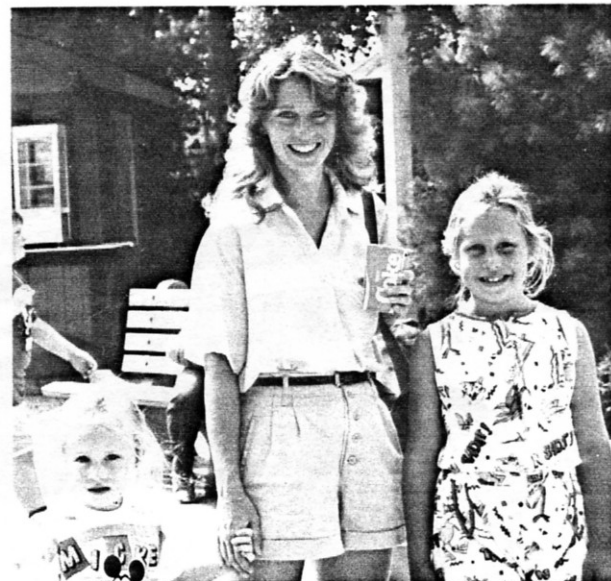
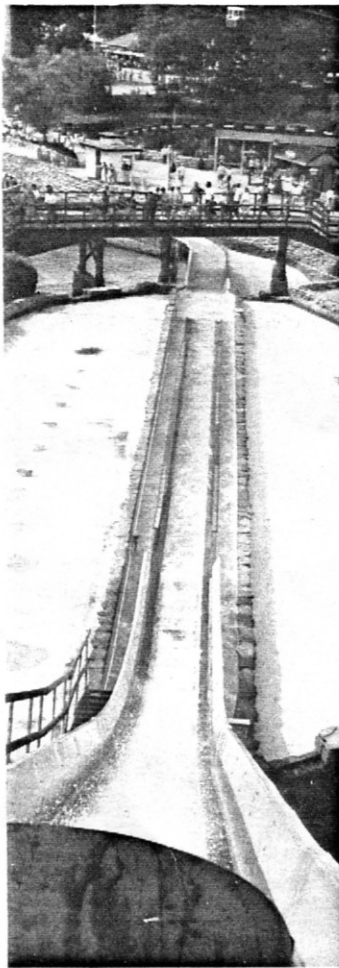
The sun was warm and bright for the 650 PPPL employees and their families who attended this year's Annual Picnic at Great Adventure. Word of mouth of last year's successful outing helped to increase ticket sales by 30%!

Beginning at 10:00 a.m. when the park opened, employees were able to participate in all of the park's activities including the safari, shows, games, and rides. Lunch featured tasty barbecued beef sandwiches, hot dogs, macaroni and cheese, corn on the cob, green beans, tossed salad, rolls, ice cream, and ice tea, soda, coffee, and beer at the Best of West Restaurant.

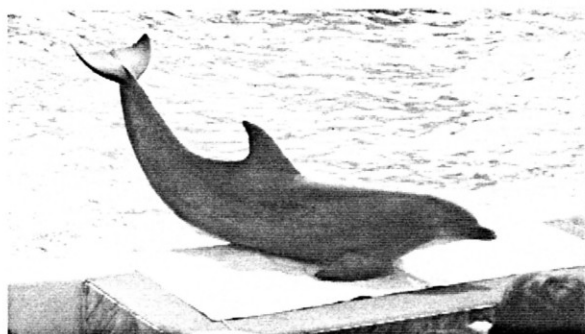
Photos taken by Linda Fahner and Carol Phillips



(continued)



**Great
Adventure
1988**



Staff Day Theme Changed

Princeton's 16th Annual Staff Day will be held October 29th at Jadwin Gym beginning at 10:45 a.m. Staff Day is the University's way of saying thank you to the bi-weekly staff for all their contributions throughout the year.

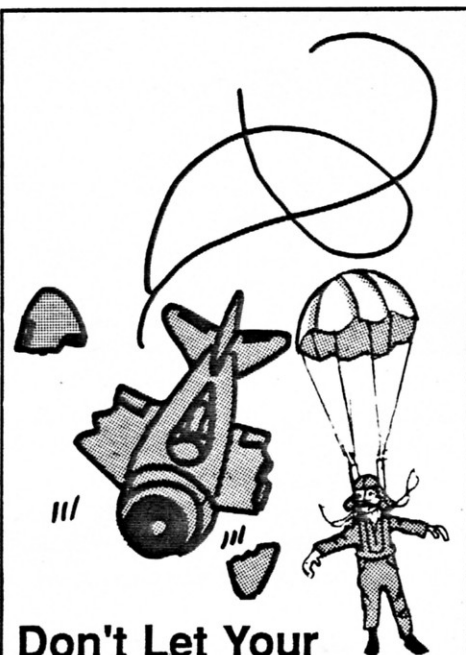
This year, the event has a new look — that of an old-fashioned street carnival. Along with the Princeton Marching Band, the Tiger and Tigress mascots, the Cheerleaders, and the mimes, game booths will be featured. Here, staff will have a chance to test their skill and luck to win Princeton prizes.

Even the lunch is new this year. "Food booths" will replace the traditional buffet. Among the goodies employees will be treated to will be hot dogs, salad, soup and chowder, chicken fingers with dipping sauces, sausage sandwiches, baked potatoes with toppings, nachos, chips, pretzels, candy apples, and cupcakes and cookies. Beverages will be found under the "big top" (tent).

At 1:00 p.m. it's football at Palmer Stadium! This year Princeton meets the University of Pennsylvania in what should prove to be a very exciting contest.

To attend this event, bi-weekly staff must pick up their tickets between October 25th and October 28th. PPPL employees at

C-Site can get their tickets at the Receptionist Desk in the LOB Lobby; those at 305 and 307 College Road can get theirs at the Receptionist Desk in 307. *



Don't Let Your Wings be Clipped!

Be sure to get all conference abstracts and papers, poster session documentation, and journal articles patent cleared before presentation. Patent clearance can be obtained using an abstract or a draft of a paper and takes about two weeks.

TRANSITIONS

The **HOTLINE** offers congratulations to the following employees:

Robert Barry who retired October 1 after 24 years of service. Bob was a Technical Assistant in Project and Operational Safety in Technical Operations.

Linda Drucker of the Computer Division and **Kenneth Siber** who were married June 25 in Hawaii.

Vianna Gleaton of Quality Assurance and Quality Control and **Eugene Duncan** who were married August 6.

Frank Mangone of TFTR Neutral Beams and his wife, **Diane**, whose son, **Matthew**, was born October 4.

Thomas Murphy who received his doctoral degree on September 27. His thesis was titled "Tokamak Diagnostics using Nuclear Techniques." Tom has taken a job at the University of California at San Diego.

For Sale

For Sale: 1984 Buick Skyhawk, 2-door, dark blue. Original owner and garage kept. 48,000 miles, power steering, brakes and windows, auto transmission, air conditioning, sun roof, AM/FM stereo, spoke wheels, and rear defrost. Excellent condition. \$4,395. Call Ceil, ext. 2036. *

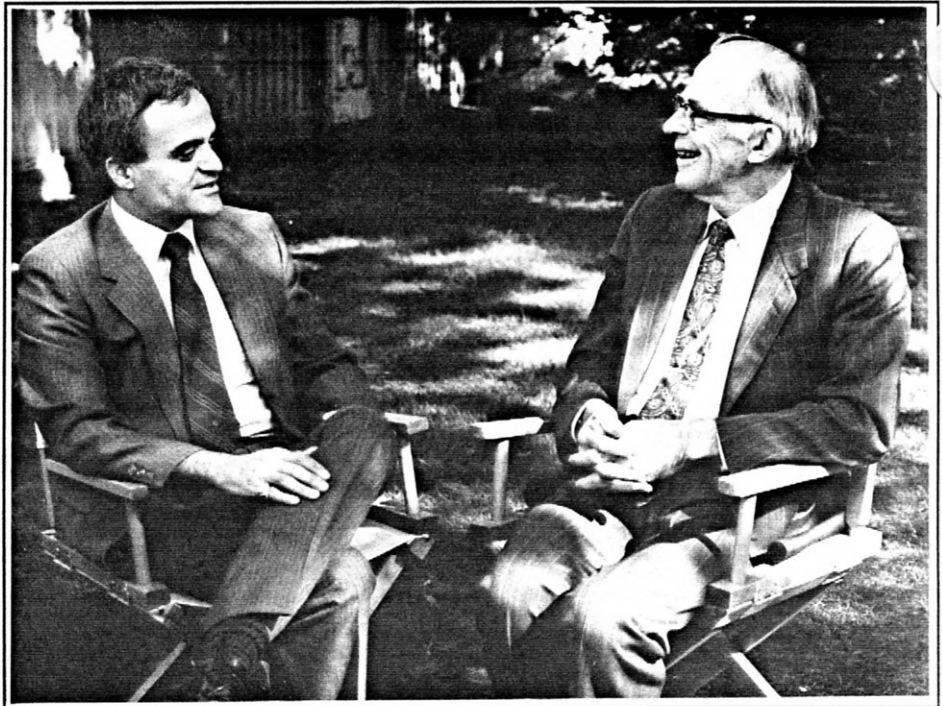
DeMeo Interviews Dr. Spitzer

A new season of "In Focus," PPPL's video magazine, premieres on Tuesday, October 25 at 12 noon with an interview by Information and Administrative Services Head Tony DeMeo with Dr. Lyman Spitzer, the Lab's first director.

Dr. Spitzer, whose picture is in the lobby exhibit hall, talks about the early days of Project Matterhorn and how the Lab has evolved since 1951 when he began his work.

Dale Meade, Head of TFTR Project Management, will update us on the tokamak's recent achievements. Other features include a look at one employee who has something in common with Paul Newman and PPPL's softball team will be seen in action.

"In Focus" can be seen on October 25 at 12 noon and 1:00 p.m. in the Gottlieb Auditorium; on October 26 at 12 noon and 1:00 p.m. at 307 College Road, Room 3; and on October 27 at 1:00 p.m. in the Auditorium.



(Photo by John Peoples)

Lyman Spitzer (right) reminisces with Tony DeMeo about the early years of the Laboratory. ★

Emergency Exercises Slated

by Phyllis Rieger

Over the next year Laboratory employees will participate in various types of drills to practice their readiness for emergencies.

According to Deputy Director of Public Safety Jack Anderson, "Emergencies can be handled effectively when we're prepared and in control."

Jack explained, "A drill will be held monthly and each will be based on different situations. Some drills will be Lab-wide and involve activation of the emergency operations center."

Bob Smart, Associate Head, Administration Department, pointed out, "The purpose of these drills is not to test our Emergency Services Unit; Unit personnel already have an excellent training program—both on and off-site—involving real fires and other simulated emergencies. Rather, it is to give our other employees, especially managers, supervisors, and Area Safety Coordinators the opportunity to get involved in hands-on emergency exercises."

According to Bob, the critical phase of an actual emergency, as well as these drills, occurs as soon as the emergency first arises. Employees at the scene must call Public Safety, evacuate buildings, keep people clear of dangerous areas and be prepared to provide assistance to our security and emergency services operations personnel.

Bob said, "As in a real emergency, employees at the scene must assume responsibility until help arrives. In most cases drills will be terminated shortly after the arrival of Public Safety personnel. To be worthwhile, these drills need the full cooperation of everyone at the scene or otherwise involved."



Time to Set Clocks Back

It's that time of year again. On Sunday, October 30th be sure to turn your clocks **back** one hour. Officially the change takes place at 2:00 a.m., but for those of us who aren't night owls or insomniacs it is sufficient to do so before going to bed or first thing in the morning. See you bright and early Monday! ★

TFTR 'Work' Course

All Lab personnel and subcontractors who require unescorted entry into the TFTR Test Cell or who work in the Test Cell and/or the Test Cell Basement must attend the course "Orientation on Work Practices in the TFTR Test Cell and Test Cell Basement." This course is next being offered Friday, October 28 from 2:30 to 3:30 p.m. in the D-Site Training Trailer. For more information contact M. Leonard, ext. 3115, Rm B310, C-Site. ★