

United Way Fund Drive Kicks Off Today

by Carol Phillips

The 1988-89 United Way Fund Drive kicks off today at PPPL. The Laboratory has set new goals this year to show our support for the United Way and the services it provides. "Based on the success of the last few campaigns, a participation rate of 70% and a total contribution of \$24,300 are worthy and attainable goals for this Laboratory," according to Jim Clark, PPPL's Deputy Director for Administrative Operations and United Way Campaign Chairman.

"Our primary goal is to bring up the participation rate," said Clark, who firmly believes that participation is more important than how much is given. "When we participate in the United Way, we are saying to our neighbors, the communities around us, that we know they are there and that we care about them. It is a way for us as a Laboratory to reach out and give them something back for their continuing support," he said.

Clark emphasized that, "A person shouldn't worry too much about the amount he or she can give, because small donations have a way of adding up. For example, if every PPPL employee gave only four dollars a month (the cost of a can of soda and a candy bar each week), this would result in a total Laboratory donation of over \$48,000—a very substantial contribution."

This year the United Way-Princeton Area Communities is celebrating its 50th anniversary. In 1938, when it held its first fund-raising campaign it was known as the Community Chest. That year, it raised nearly \$70,000 to support 11 agencies. This year the goal is \$2.6 million, and the number of agencies is 30. Employee and individual donations accounted for over 65% of the \$2.3 million raised last year. Wide participation really counts.



(Photo by Dietmar Krause and John Peoples)

Volunteers play a major role in PPPL's United Way Fund Drive. This year over 50 volunteers will be seeking their fellow employees support for the United Way. Show you care, say "yes" when you're asked to give.

The United Way and the Laboratory realize that many employees may be hesitant to give at work because they want to support their home communities. To accommodate this and to allow PPPL to receive credit for its employees' participation in the United Way at the same time, a space has been provided on the pledge card where you can designate the county (Bucks, Mercer, Burlington, etc.) you want to receive your donation. You can also list the agency or agencies you want your donation to go to.

Area Volunteers will be distributing pledge cards to their fellow employees starting today. Fill yours out now. Your contribution does make a difference. If you have any questions regarding the United Way, or if you need additional pledge cards, contact Mary Ann Brown, United Way Coordinator, ext. 3045. ✱

Inside

Engineering Group Adds Incentive to Fund Drive	2
Win a Free Meal ...	2
Volunteers Make it Work	3
United Way Facts ..	4
Funding Picture ...	4
True Stories	5

Incentive Added to United Way Campaign Fund

by Phyllis Rieger

To add incentive to this year's United Way fund-raising goal of increased participation and dollars, the Engineering Department issues this challenge: any other group attaining a higher percentage of participation than Engineering (and Jack Joyce says "No Contest!") will be treated to a party at the Gun Club.

According to Jack, designated as team leader for the Engineering group, "The Lab's been divided into five groups, each with a team leader. Besides Engineering these include: Research—Don Monticello; Administrative Operations and Director's Office—Bob Smart; TFTR—Halsey Allen; and the Deputy Director for Technical Operations Office, CIT, and Experimental Projects—Harry Howard."

Mary Ann Brown is United Way Coordinator for the Lab's campaign. "I'll be posting the participation percentage daily for the first week," said Mary Ann.

"Then the participation rate will be charted weekly. Rate graphs can be seen in the LOB lobby and the reception areas of 305 and 307. I'll also be posting information on the bulletin boards."

Jack, who's serving his third year as a director on the board of the Princeton Area United Way, said, "Over the last two years the Engineering Department has made substantial increases in participation in the United Way Drive. We're sufficiently enthusiastic about this year's effort to raise funds and participation to generate this challenge to the other groups in the Lab to exceed Engineering."

Is that so, Jack? Well, your fellow team leaders respond:

"There are challenges and there are real challenges," said Harry Howard. "I have my work cut out for me. Hear this Jack. Engineering doesn't stand a chance."

Don Monticello said, "Research has no comment and is posturing at this time."

The serious-minded Halsey Allen said, "The United Way challenge issued by Engineering should speak to the conscience of every member of the PPPL staff."

"I believe that the result will benefit not only agencies represented in this campaign but the Lab as a community and, more importantly, each individual participant who invests a part of himself/herself in reaching out to families in need."

And Bob Smart said, "Don't believe everything that you hear in an election year! Administration beat Engineering last year and we're planning another victory celebration this year."

Who'll win? Nobody knows at this point but one thing is certain. The United Way does depend on you! ✨

Win Free Meal at Local Restaurant!

Eight Gift Certificates to be Given Away during United Way Campaign

Would you like the chance to eat at a local restaurant as a guest of the Laboratory? How, you ask. The answer is simple. Just donate \$20 or more to the United Way and you will automatically be eligible to win one of eight \$25 gift certificates the Laboratory is giving away during this year's United Way campaign.

Beginning Monday, October 31 and for three Mondays there after, two names will be drawn from a basket containing the names of all \$20-plus givers. How many chances you have to win depends on when you return your pledge card. Once an employee's name is placed in the basket it remains there until the contest is over. Odds for winning decrease as names are added to the basket, so it's to your advantage to get your donation in early

So how do you get your name in the basket? Return the yellow United Way pledge card as soon as possible. Area Volunteers will begin distributing the pledge cards on October 25. Donation envelopes may be given to your Area

Volunteer or an you can return the envelope yourself to Mary Ann Brown, Room B354, C-Site. Envelopes received by noon October 28 are eligible for the October 31 drawing; all those received by noon November 4 will be included in the November 7 drawing; those received by noon November 11 will be in the November 14 drawing; and those received by noon November 18 will be added for the November 21 drawing.

How do you know if you've won? All winners will be notified by telephone and their names will be posted in the LOB Lobby and at 305 and 307 College Road near the Engineering Department's "Challenge" scores.

Giving to the United Way is easy. Contributions can be made by check, payroll deduction, or periodic billing, but remember, to be eligible for the drawing and the \$25 gift certificate, you must give at least \$20 for the year. Take a chance. You can't lose when you give the United Way. ✨



The Symbol

You have seen this symbol around—at health agencies, day care facilities, neighborhood centers and, of course, on all United Way posters and publications. But did you know the symbol's very simple, yet universal message?

At the bottom is a helping hand. The hand symbolizes the services and programs supported by the United Way that in turn support the people in our community.

The image in the center, based on the universal symbol of mankind, is cradled by the helping hand. It shows that all people are supported and uplifted by United Way efforts.

A rainbow springs from the helping hand, representing the hope of a better life possible through the United Way.

In these simple figures is the sum total of the United Way philosophy—to promote voluntary organizations in their efforts to provide a better life for us all.

The United Way. It brings out the best in all of us. ✨

PPPL United Way Volunteers—They Make it Work!

<u>Area</u>	<u>Volunteer</u>	<u>Extension</u>
Accounting and Financial Control	Noreen Solly	3510
Administration Department Office	Gloria Pollitt	2653
Applied Physics	Betty Carey	2646
CIT Studies	Gail Marshall	3517
Controller's Office	Marie Iseicz	2456
Deputy Director for Technical Operations Office	John Wheeler	2082
Director's Office	Letty Wohar	3048
Emergency Services	Skip Clayton	3166
Engineering Department Office	Mary Ann Brown	3045
Engineering Analysis Division	Carol Gill	3355
Engineering Computer Division	Jack Abraitis	3004
	Michaela Mole	3699
	Anne Romano	3362
Electronic and Electrical Engineering Division	Mel Gensamer	3042
Engineering Drafting Division	Janet Popp	3034
Experimental Projects	Virginia Baunach	3161
	Bob Ellis, Jr.	3302
Graduate Affairs	Dinah Larsen	2489
Information Resource Management	Debbie Smith	2575
QA/QC Operations	Grace Emma	2201
Materiel Control	Joyce Bitzer	2714
Mechanical Engineering Division	James Bates	3028
	Jack Mount	3144
	Bill Steer	3065
	Tom Steer	3065
Occupational Medicine	Faith Robak	2869
PBX-M	Madge Mitas	3100
Personnel	Ceil O'Brien	2036
Plant Engineering	Dominic Bisanzio	3559
	Ed Gilsenan	2887
	George Kalescky	2949
	Edna Kalmus	3384
	Mark Kijek	3417
	Louise Schaufler	3306
	William Taylor	2465
Procurement	JoAnn Palladino	2998
Project and Operations Safety	Elaine Kozinsky	2600
Research Department Office	Barbara Sobel	2602
TFTR Diagnostics	Janet Hergenhan	2675
	John Lowrance	3374
	Hal Nastelin	2818
TFTR D-T Systems	Don Knutson	3007
	Ann McKee	2198
	Gale Stevens	3575
TFTR Heating Systems	John Frankenberg	2844
	Tom O'Connor	2230
TFTR Physics Program	Chris Ritter	3347
TFTR Project Office	Dolores Bergmann	2200
TFTR Tokamak Operations	Rosemarie Fuchs	3334
	Sonja Patterson	2310
	Anne Rosenwasser	3303
	Phyllis Schwarz	3192
	Randy Wilson	2061
Theory Division	Barbara Sarfaty	2440
X-Ray Laser Studies	Sheryl Wasylenko	3277

United Way Agencies

American Red Cross-Princeton Area Chapter
 Association for Advancement of Mental Health
 Better Beginnings Child Development Center
 Big Brothers/Big Sisters Association of Mercer County
 Boy Scouts of America—George Washington Council
 Camp Fire Girls and Boys Self-Reliance Programs
 Catholic Welfare Bureau: Child Abuse/Family Violence Program
 Child Care Connection, Inc.
 Children's Home Society of New Jersey
 Community Guidance Center of Mercer County
 Crawford House
 Deaf Contact
 Delaware-Raritan Girl Scout Council
 Family Counseling Service of Somerset County
 Family Service Princeton Area
 Florence Crittenton Home
 Jewish Community Centers of the Delaware Valley
 Jewish Family Service of the Delaware Valley
 Mercer Unit—Association for Retarded Citizens/NJ
 Princeton Area Council of Community Services
 Princeton Community Homemaker: Home Health Aide Service
 Princeton Nursery School
 Princeton Senior Resource Center
 Rape Crisis Program of the Trenton YWCA
 Rolling Hills Girl Scout Council
 University-Now Day Nursery
 Womanspace
 YMCA of Hightstown/East Windsor
 YMCA of Princeton
 YWCA of Princeton

United Way Facts

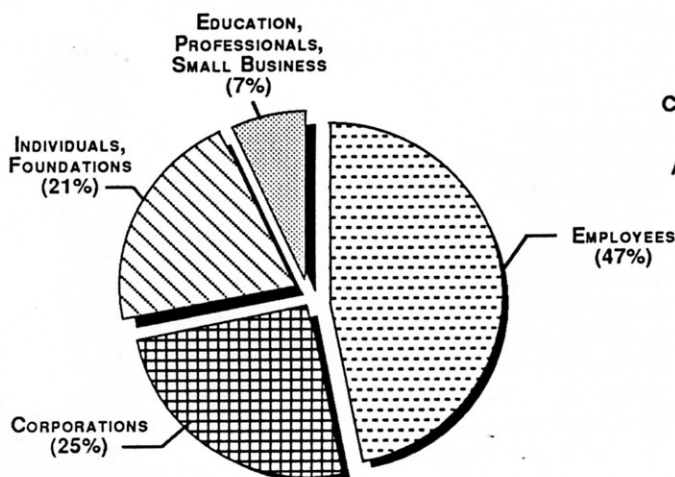
There are more than 2,300 United Ways located throughout America, 19 located in foreign countries and two U.S. territories, and 200 affiliated organizations worldwide. All these organizations, made up primarily of volunteers, help meet health and human-care needs through vast networks of local charitable groups and volunteers.

Each United Way is an independent community resource governed by a local board of volunteers. These volunteers, who represent all facets of business and community life, decide the financial allocations to member agencies. Important factors in this decision are the annual review of each agency's programs, budgets, and other financial information, as well as the needs of the people they serve and the community. The amount allocated to each agency varies from year to year, depending on what services are provided, numbers of people served, and so forth.

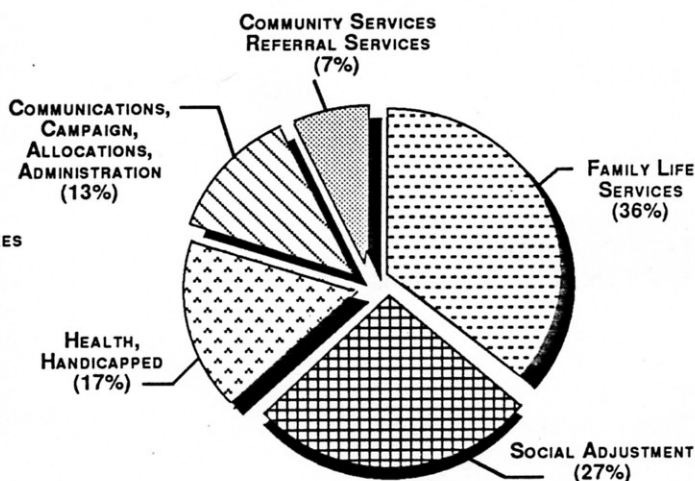
The United Way has an "open door" membership policy. Any agency may apply for membership and funding. Standards include: nonprofit status, nonpaid voluntary board of directors, agency accountability to the public, fiscal responsibility, efficient management, and a demonstrated need for services. The local board of volunteers decides what agencies are admitted to the United Way. ✪

The Total Picture: United Way Funding

Where the Money Comes From



Where the Money Goes



True Stories



"It's fun to be a Cub Scout. We play games and things like Simon Says and Tug of War. We learn new things like the Law of the Pack and the Cub Scout Promise. We went camping and my pinewood racer came in third place. I get to see my friends and my parents are with me, too. My brother, Michael, will be a Tiger Cub next year."

*Matthew Harrison
Plainsboro*



"Daisy helps me. She takes me for walks with my dog." Five days a week Daisy, an aide from Princeton Community Home-maker, visits Rita to assist with basics—eating, bathing and dressing. Daisy is proud of Rita's determination to remain active. Having lived in Princeton since 1920, Rita is thankful for Daisy's companionship and assistance.

*Rita Daniele
Princeton*



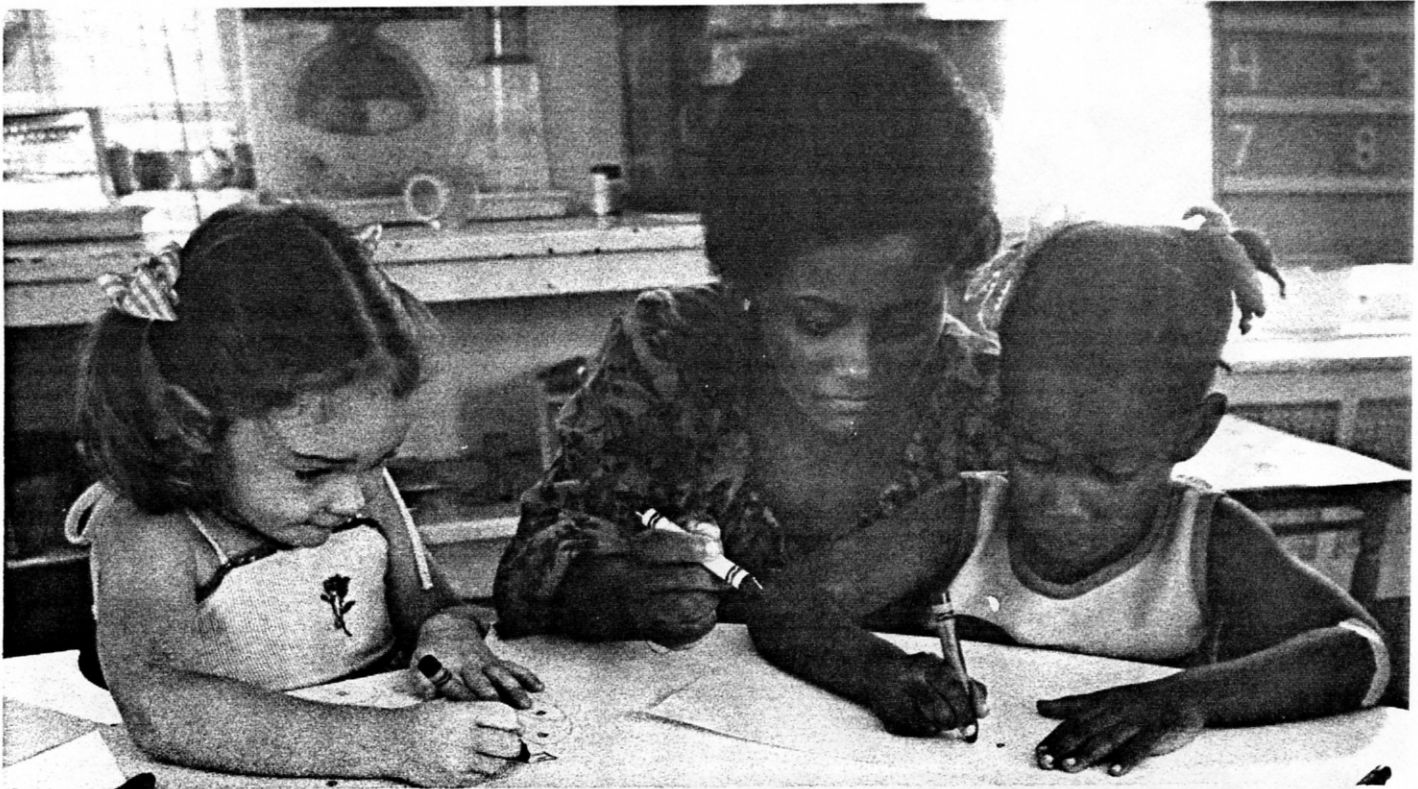
"I know I'm a special needs child. Mommy spent a long time trying to find a place that would take care of me. Now I have a real nice safe place to play after school." The Children's Home Society enable David's mother to earn a living while knowing that her handicapped son would be well-cared for by concerned, reliable people.

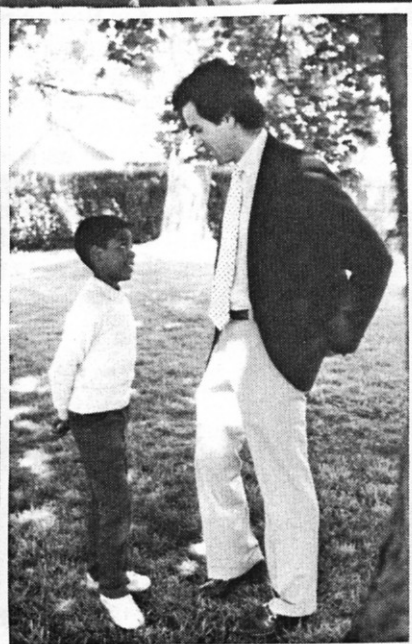
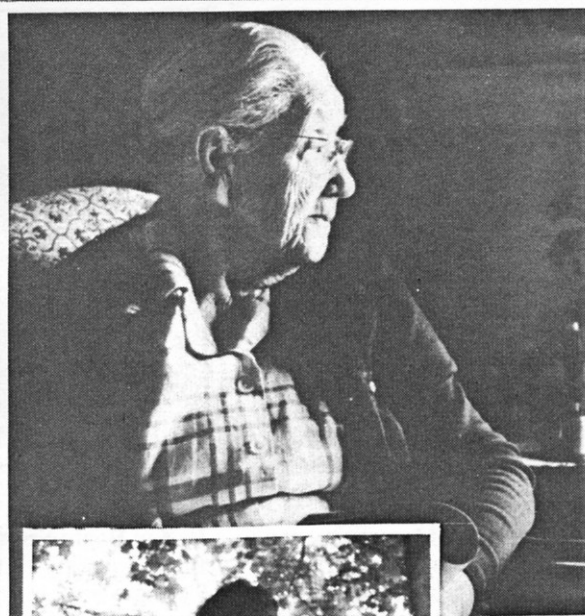
*David Berry
Cranbury*



"My favorite thing at Better Beginnings is painting and moving the toy clock. I bring a book every day for after our nap. Mom takes me there in the morning and picks me up at night. I like being around other kids because they're my friends. I've been going there for two years. I want to go now so I don't miss the snack."

*She'na Gunnell
Hightstown*





**The
United
Way
Picture**