

# Hotline

The Princeton Plasma Physics Laboratory is a United States Department of Energy Facility

## You Can Make a Difference ...the United Way

**D**are to Care! The United Way Campaign for 1995 is underway at PPPL, with a challenge to employees to match their generosity of years' past.

"The United Way campaign provides a unique opportunity for us to express our concern for the needs and welfare of our neighbors. In these times of economic uncertainty, United Way agencies face an even greater demand for their services. Therefore, your contribution now is all the more important," said PPPL Director Ronald C. Davidson.

Added Mary Ann Brown, PPPL's 1995 United Way Chairperson, "The Laboratory has always been a strong supporter of the United Way. I hope this year we can continue our excellent standard of giving."

To assist employees in continuing their spirit of generosity, there will be two United Way meetings on Monday, December 18. Staff will be divided into two groups, each of which will be assigned to one meeting. Meetings are scheduled for 10 A.M. and 3 P.M. in the MBG Auditorium.

These gatherings will provide information on United Way programs

and will feature a brief talk by a United Way representative, two videos, refreshments, and door prizes [see list of prizes in this issue of **HOTLINE**]. The prizes have been donated by employees and local merchants.

Employees are free to attend a meeting other than the one they are scheduled for. Everyone who attends a meeting is eligible for the door prizes that are drawn at that meeting. And those who contribute to this year's campaign will be entered in the Grand Prize Drawing for a \$300 gift certificate for travel arrangements, compliments of PPPL. The Grand Prize will be drawn on

Friday, December 22, at 1 P.M., in the C-Site Cafeteria.

Staff will receive pledge forms in the interoffice mail prior to the December 18 meetings. These forms can be dropped off at the close of the employee's designated meeting or mailed to Mary Ann Brown at C-Site, LOB, Room B-374. Donations may be given as a one-time contribution or through payroll deductions. Contributors may also earmark which charities they would like their donations to fund.

According to United Way, many contributors divide their gifts between

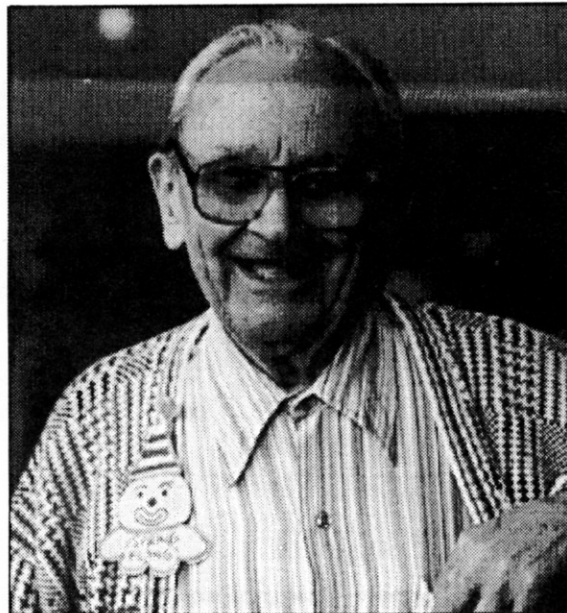
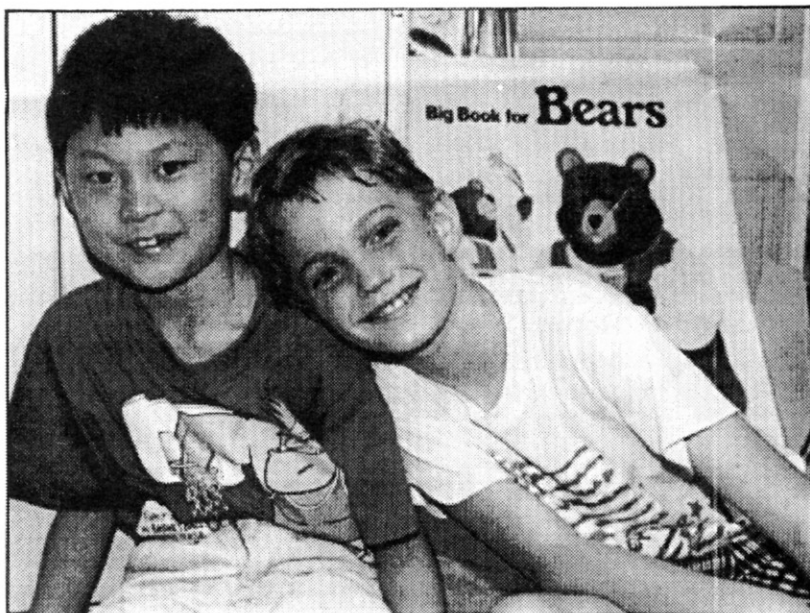
**Continued on page 2**



This year's United Way Campaign Committee members are, from left, Sara Flohr, Margaret Young, Patti Wieser, Sonja Patterson, Rod Templon, Steve Iverson, Barbara Sarfaty, and Angelo Candelori. Not pictured is PPPL's United Way Campaign Chairperson Mary Ann Brown.



**United Way**  
**Special Edition**



## United Way

Continued from page 1

their work community and home community or a specific program. Gifts may also be targeted to a particular field of service.

Dozens of agencies are listed under service areas supported by United Way. A sampling of agencies includes the YMCA/YWCA, the Jewish Community Center, the Children's Home Society, the American Red Cross, Womanspace, Big Brothers and Big Sisters, Catholic Charities, and Multiple Sclerosis. Service areas range from child care to services for seniors, disabled individuals, and youth and families at risk, to community initiatives, emergency information and referral, health services,

counseling, and substance abuse services.

The United Way of Greater Mercer County 1995-1996 Campaign Chairperson Robert C. Machin noted that the Mercer County area is changing daily with some corporations continuing to restructure while others move out of the area.

"The local economic conditions are leading to an increase in the need for human care services for those who live and work here. At times like this, United Way of Greater Mercer County becomes even more important to our community and, in turn, so does your United Way contribution," said Machin in a published message. "As our region continues to change, United Way can be a beacon of hope for our community." ●

## Grand Prize Drawing

**Friday, December 22**  
1 P.M., Cafeteria  
(during the Holiday Free Lunch)

**Grand Prize:**

**\$300 Gift Certificate  
for  
Travel Arrangements**

**Compliments of PPPL**

**Runner-up Prize:**

**Greens Fees and Carts for Four  
at  
Princeton Meadows Country Club**

*Anyone who contributes  
to this year's PPPL United Way  
Campaign will automatically be  
entered in the Grand Prize Drawing.*

## HOTLINE

**Editor:** Carol Phillips  
**Writer:** Patti Wieser  
**Photography:** Dietmar Krause

**Graphic Artist:** Greg Czechowicz  
**Layout:** Patti Wieser

The **HOTLINE** is issued by the Princeton Plasma Physics Laboratory, a research facility supported by the United States Department of Energy. It is primarily an internal publication. Correspondence and requests to reprint material should be directed to the Editor, PPPL HOTLINE, P.O. Box 451, Princeton, NJ 08543; Interoffice correspondence should be addressed to Room B366, LOB Bldg., C-Site; fax 609-243-2751; telephone 609-243-2754; e-mail caphilli@pppl.gov

# Committee Chooses Slogan

## Cheryl Such Wins Contest

**P** PPL'er Cheryl Such found it paid to put on her thinking cap for a United Way slogan.

"Why not?" she said when she saw the United Way Slogan Contest announcement in the *PPPL News Alert*. "It was a spur-of-the-moment impulse."

**Dare to Care?  
Share!  
The United Way**

Such, who has been at the Lab for 15 years and is presently the TFTR Operations Center Manager, came up with the top winning slogan — Dare to Care? Share! The United



*PPPL United Way Campaign Chairperson Mary Ann Brown (left) presents a prize to slogan winner Cheryl Such. The prize was a \$20 gift certificate to the Forrestal at Princeton (formerly Scanticon).*

Way — while driving home from work one evening. The United Way Campaign Committee selected it as

the winner out of seven entries and awarded Such a \$20 gift certificate to the Forrestal at Princeton. ●

## Door Prizes to Highlight the United Way Meetings

### Admission Tickets

UA MOVIES AT MARKETFAIR

### Admission Tickets

GENERAL CINEMA, MERCER MALL

### Admission Tickets

GARDEN THEATER, PRINCETON

### Buy 1, Get 1 Free Lunch

CASTAWAYS, FORRESTAL VILLAGE

### Sunday Brunch for Two

CASA LUPITA, MERCER MALL

### \$15 Gift Certificate

CHILIS RESTAURANT, ROUTE 1

### \$15 Gift Certificate

RUMBLESEATS, SO. BRUNSWICK

### \$20 Gift Certificate

THE ANNEX RESTAURANT, PRINCETON

### \$20 Gift Certificate

BOARDWALK SEAFOOD, FORRESTAL VILLAGE

### \$20 Gift Certificate

TGI FRIDAY'S, MARKETFAIR

### \$30 Gift Certificate

SUNNY GARDEN, ROUTE 1

Italian Glass Jar with Assorted Candy  
PIER 1

### Dinner for Two (up to \$40)

CHARLIE BROWN'S, ROUTE 1

### Dinner for Two

ALCHEMIST & BARRISTER, PRINCETON

### \$10 Gift Certificate

BRENTANOS BOOKSTORE,  
MARKETFAIR

### \$20 Gift Certificate

THE SPORTS AUTHORITY, ROUTE 1

### \$25 Gift Certificate

CREATIVE HANDS, MONTGOMERY

### Dinner for Two

ACACIA

### Princeton Tiger Blanket

H. GROSS & CO, OUTFITTERS

### Hardcover Book (exchangeable)

BARNES & NOBLE, MARKETFAIR

### Gift Box of Coffees and Biscotti

PLATYPUS, MARKETFAIR

### Free Car Washes

PRINCETON CAR WASH, ROUTE 1

### Dinner for Two

RUSTY SCUPPER

### Dinner for Two

MARRIOTT

### Brunch for Two

PROSPECT HOUSE

### \$50 Gift Certificate

MCCAFFREY'S MARKET

### Five \$12 Gift Certificates for Cake

PENNINGTON MARKET

### Hair Cut and Facial (\$80 Value)

ARTISTIC DESIGN

### \$25 Gift Certificate

JAZZERCISE

### Four \$20 Gift Certificates to Forrestal

at Princeton (formerly Scanticon)

PPPL

### Manicure

LINDA DIBELLA NAILS

### Avon Crystal Bowl

LENA SCIMECA

### Four Carousel Coffee Mugs

ANONYMOUS

### Decorated Evergreen Wreath

RICHARD'S FARM MARKET

### Tray of Assorted Cookies

RICHARD'S FARM MARKET

### Trays of Holiday Cookies

CRAMERS BAKERY, YARDLEY

# Campaign Meetings

*The One-Day United Way Campaign at PPPL is Monday, December 18, in the MBG Auditorium. Please come to the meeting for your group. Feel free to attend the other meeting if you are unable to attend the one for your group. Thank you!*



## 10 A.M. — Group 1

- Engineering and Technology Development Department
- Support Services Department
- Office of Human Resources and Administration

## 3 P.M. — Group 2

- Advanced Projects
- Tokamak Confinement Systems Department
- Office of the Director
- Office of Resource Management
- Plasma Science and Technology Department
- TFTR

## Dare to Care? Share! The United Way