



**January 22-28, 2018**

# Council Café Lunch

This Week:

**Mike Zarnstorff,**  
Deputy Director  
for Research



Wednesday, Jan. 24  
12 p.m., PPPL Café

# Council Café Lunch

This Week:

**Mike Zarnstorff,**  
Deputy Director  
for Research



Wednesday, Jan. 24  
12 p.m., PPPL Café

# COLLOQUIUM

## Exoplanet Snapshots, from Precision Optics to Precise Astronomical Measurements

**Laurent Pueyov**

Space Telescope Science Institute

**Wednesday, Jan. 24**

**4:15 p.m., M.B.G. Auditorium, Lyman Spitzer Building**



# COLLOQUIUM

## Exoplanet Snapshots, from Precision Optics to Precise Astronomical Measurements

**Laurent Pueyov**

Space Telescope Science Institute

**Wednesday, Jan. 24**

**4:15 p.m., M.B.G. Auditorium, Lyman Spitzer Building**

# COLLOQUIUM

## Exoplanet Snapshots, from Precision Optics to Precise Astronomical Measurements

**Laurent Pueyov**

Space Telescope Science Institute

**Wednesday, Jan. 24**

**4:15 p.m., M.B.G. Auditorium, Lyman Spitzer Building**

# **Celebration for VSP employees**

**Friday, Jan. 26**

**1:30 p.m.**

**LSB Lobby**

**Come have some cake and coffee and bid farewell to the employees taking a voluntary separation from the laboratory.**

# **Celebration for VSP employees**

**Friday, Jan. 26**

**1:30 p.m.**

**LSB Lobby**

**Come have some cake and coffee and bid farewell to the employees taking a voluntary separation from the laboratory.**

Ronald E. Hatcher

# Science on Saturday LECTURE SERIES

## Magnetic Explosions in the Plasma Universe

**Amitava Bhattacharjee**

Head, Theory Department, PPPL,  
and professor of astrophysical sciences, Princeton University

**Saturday, Jan. 27**

**9:30 a.m., M.B.G. Auditorium, Lyman Spitzer Building**



Ronald E. Hatcher

# Science on Saturday LECTURE SERIES

## Magnetic Explosions in the Plasma Universe

**Amitava Bhattacharjee**

Head, Theory Department, PPPL,  
and professor of astrophysical sciences, Princeton University

**Saturday, Jan. 27**

**9:30 a.m., M.B.G. Auditorium, Lyman Spitzer Building**

Ronald E. Hatcher

# Science on Saturday LECTURE SERIES

## Magnetic Explosions in the Plasma Universe

**Amitava Bhattacharjee**

Head, Theory Department, PPPL,  
and professor of astrophysical sciences, Princeton University

**Saturday, Jan. 27**

**9:30 a.m., M.B.G. Auditorium, Lyman Spitzer Building**



# Open meeting focuses on PPPL's FY 2017 performance





# Open meeting focuses on PPPL's FY 2017 performance





# Lots of good energy as Ronald E. Hatcher Science on Saturday lecture series kicks off with talk on batteries





# Lots of good energy as Ronald E. Hatcher Science on Saturday lecture series kicks off with talk on batteries





# IOI project drawing to a close as C Site-MG Building nears completion





# IOI project drawing to a close as C Site-MG Building nears completion





# IOI project drawing to a close as C Site-MG Building nears completion



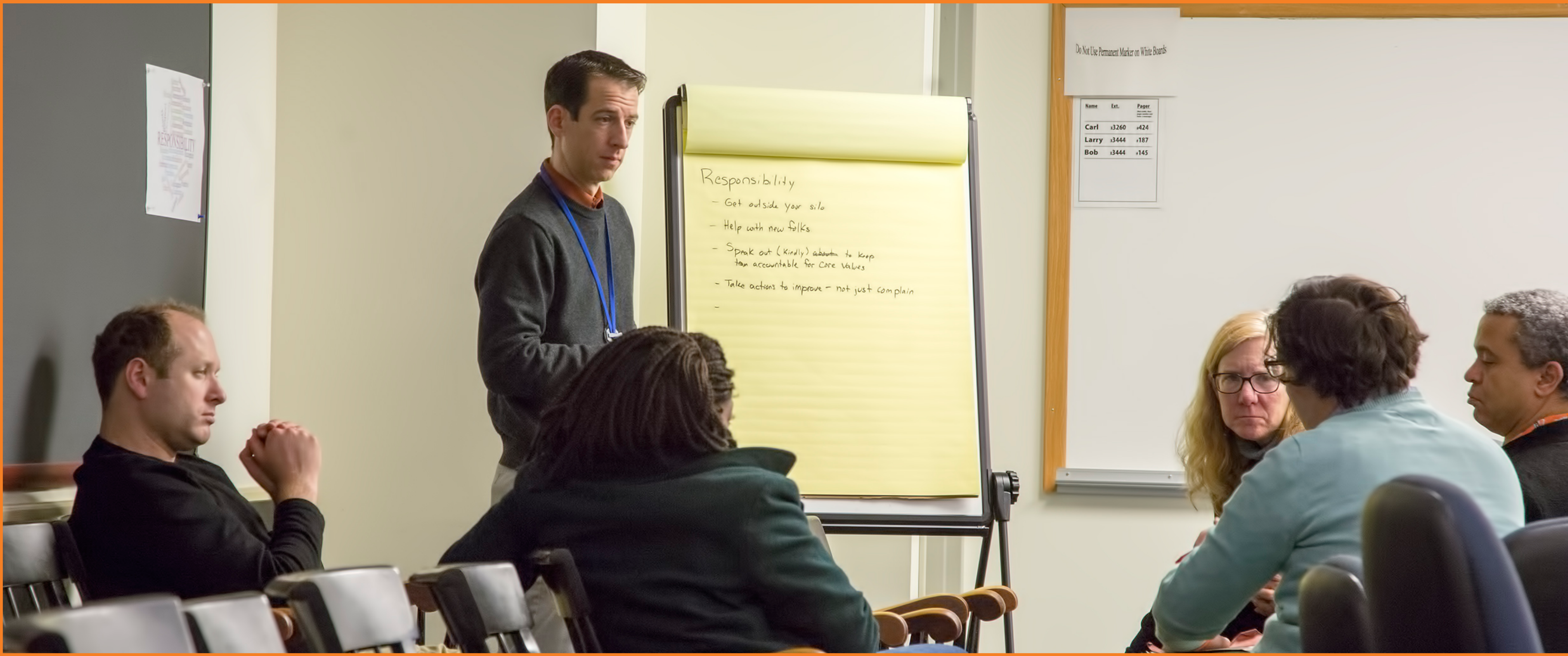


# Information sessions explore how to live core values at PPPL



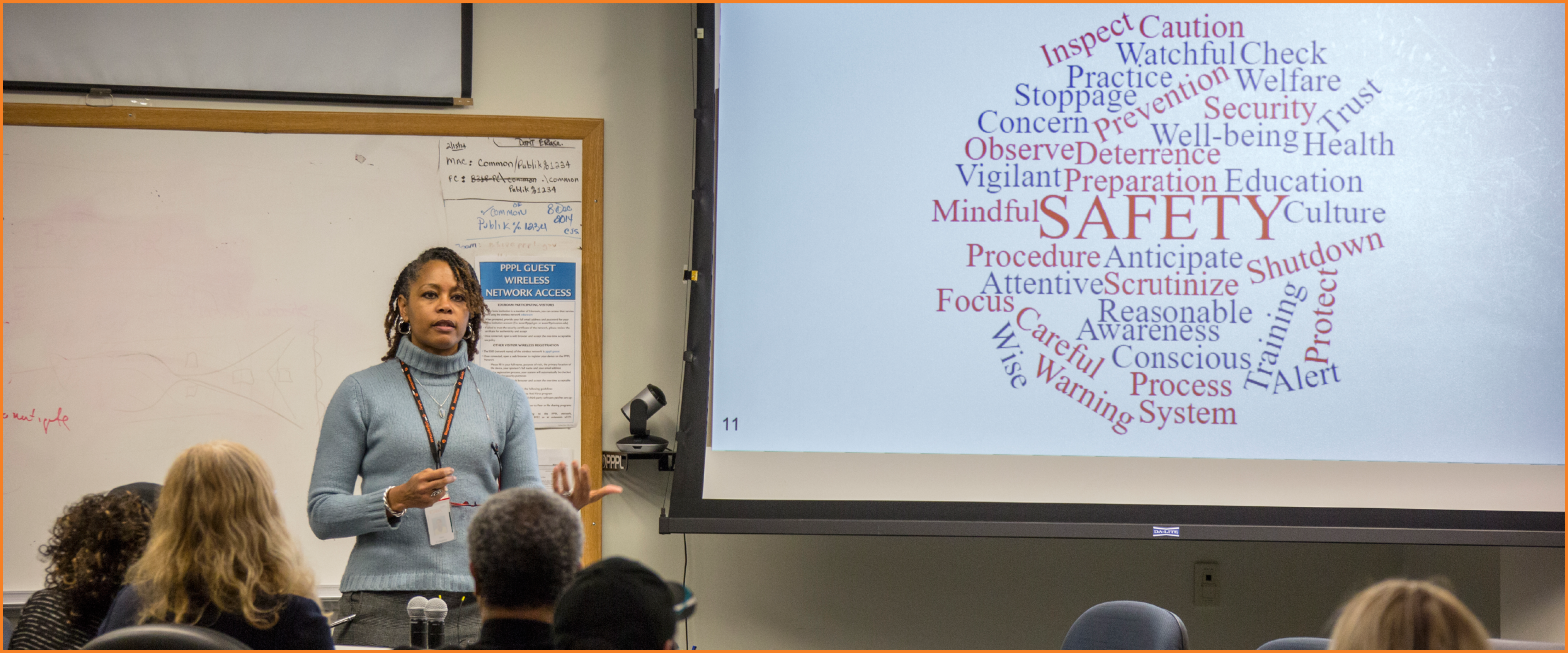


# Information sessions explore how to live core values at PPPL





# Information sessions explore how to live core values at PPPL





# **Submit your questions for Plasma 101 Lunch & Learns**

**Plasma 101 Lunch & Learns for staff have started.  
Please submit your questions about fusion energy, plasma,  
or any of the science we do here in the box in the LSB lobby.**

**Sample questions:**

**What is plasma?**

**How is what we do different from “nuclear power?”**

**Why don't we have fusion energy on the grid yet?**

# **Submit your questions for Plasma 101 Lunch & Learns**

**Plasma 101 Lunch & Learns for staff have started.  
Please submit your questions about fusion energy, plasma,  
or any of the science we do here in the box in the LSB lobby.**

**Sample questions:**

**What is plasma?**

**How is what we do different from “nuclear power?”**

**Why don't we have fusion energy on the grid yet?**

BROCK

NICK PETTI

Chef Manager

Premier

Café

at PPPL

BREAKFAST ..... 7 a.m. • 10 a.m.

CONTINENTAL BREAKFAST ..... 10 a.m. • 11:30 a.m.

LUNCH ..... 11:30 a.m. • 1:30 p.m.

SNACK SERVICE ..... until 2:30 p.m.

	Monday Jan. 22	Tuesday Jan. 23	Wednesday Jan. 24	Thursday Jan. 25	Friday Jan. 26
COMMAND PERFORMANCE Chef's Feature	Chicken Saltimbocca with Risotto	Baked Potato Bar	Sushi Day	"Super Salad"	Beefaroni with Garlic Bread
Early Riser	Bacon, Egg & Cheese Croissant	Sausage, Egg and Cheese Biscuit	Chocolate Chip Pancakes served with Choice of Breakfast Meat	Ham, Egg and Cheese Sandwich	2 Eggs, 1 Pancake, Choice of Breakfast Meat & Potatoes
Country Kettle	Vegetable Noodle	Beef Barley	Cream of Mushroom	Tuscan Chicken and Pasta	Seafood Chowder
Deli Special	Capicola with Provolone and Hot Pepper Relish	Hummus Turkey Wrap	Sushi Day	Deviled Egg Salad Croissant	Chicken, Mozzarella, Red Onion, Basil, Arugula and Balsamic Tomatoes on French Bread
Grille Special	Patty Melt	Shrimp Tacos	Pork Torta on Ciabatta	Portobello Mushroom "Cheesesteak"	Apple Cheddar Melt
Panini	Tomato, Fresh Mozzarella, Spinach and Pesto Hoagie	Grilled Eggplant, Spinach and Tomato Parmesan	Sushi Day	Sausage and Peppers	Cuban Sandwich

MENU SUBJECT TO CHANGE WITHOUT NOTICE

HEART HEALTHY

VEGETARIAN OPTION



BROCK

NICK PETTI

Chef Manager

Premier



BREAKFAST ..... 7 a.m. • 10 a.m.

CONTINENTAL BREAKFAST ..... 10 a.m. • 11:30 a.m.

LUNCH ..... 11:30 a.m. • 1:30 p.m.

SNACK SERVICE ..... until 2:30 p.m.

	Monday Jan. 22	Tuesday Jan. 23	Wednesday Jan. 24	Thursday Jan. 25	Friday Jan. 26
COMMAND PERFORMANCE Chef’s Feature	Chicken Saltimbocca with Risotto	Baked Potato Bar	Sushi Day	“Super Salad”	Beefaroni with Garlic Bread
Early Riser	Bacon, Egg & Cheese Croissant	Sausage, Egg and Cheese Biscuit	Chocolate Chip Pancakes served with Choice of Breakfast Meat	Ham, Egg and Cheese Sandwich	2 Eggs, 1 Pancake, Choice of Breakfast Meat & Potatoes
Country Kettle	Vegetable Noodle	Beef Barley	Cream of Mushroom	Tuscan Chicken and Pasta	Seafood Chowder
Deli Special	Capicola with Provolone and Hot Pepper Relish	Hummus Turkey Wrap	Sushi Day	Deviled Egg Salad Croissant	Chicken, Mozzarella, Red Onion, Basil, Arugula and Balsamic Tomatoes on French Bread
Grille Special	Patty Melt	Shrimp Tacos	Pork Torta on Ciabatta	Portobello Mushroom "Cheesesteak"	Apple Cheddar Melt
Panini	Tomato, Fresh Mozzarella, Spinach and Pesto Hoagie	Grilled Eggplant, Spinach and Tomato Parmesan	Sushi Day	Sausage and Peppers	Cuban Sandwich

MENU SUBJECT TO CHANGE WITHOUT NOTICE

HEART HEALTHY

VEGETARIAN OPTION

BROCK

NICK PETTI

Chef Manager

Premier



BREAKFAST ..... 7 a.m. • 10 a.m.

CONTINENTAL BREAKFAST ..... 10 a.m. • 11:30 a.m.

LUNCH ..... 11:30 a.m. • 1:30 p.m.

SNACK SERVICE ..... until 2:30 p.m.

	Monday Jan. 22	Tuesday Jan. 23	Wednesday Jan. 24	Thursday Jan. 25	Friday Jan. 26
COMMAND PERFORMANCE Chef’s Feature	Chicken Saltimbocca with Risotto	Baked Potato Bar	Sushi Day	“Super Salad”	Beefaroni with Garlic Bread
Early Riser	Bacon, Egg & Cheese Croissant	Sausage, Egg and Cheese Biscuit	Chocolate Chip Pancakes served with Choice of Breakfast Meat	Ham, Egg and Cheese Sandwich	2 Eggs, 1 Pancake, Choice of Breakfast Meat & Potatoes
Country Kettle	Vegetable Noodle	Beef Barley	Cream of Mushroom	Tuscan Chicken and Pasta	Seafood Chowder
Deli Special	Capicola with Provolone and Hot Pepper Relish	Hummus Turkey Wrap	Sushi Day	Deviled Egg Salad Croissant	Chicken, Mozzarella, Red Onion, Basil, Arugula and Balsamic Tomatoes on French Bread
Grille Special	Patty Melt	Shrimp Tacos	Pork Torta on Ciabatta	Portobello Mushroom "Cheesesteak"	Apple Cheddar Melt
Panini	Tomato, Fresh Mozzarella, Spinach and Pesto Hoagie	Grilled Eggplant, Spinach and Tomato Parmesan	Sushi Day	Sausage and Peppers	Cuban Sandwich

MENU SUBJECT TO CHANGE WITHOUT NOTICE

HEART HEALTHY

VEGETARIAN OPTION