



May 22–28, 2017

Invention Trivia!

When was the brown paper bag invented?

1778

1852

1899

1919

Invention Trivia!

When was the brown paper bag invented?

1778

1852

1899

1919

Invention Trivia!

When was the brown paper bag invented?

1778



1852

1899

1919

Invention Discovery Day

Tuesday, May 23

11:30 a.m.–12:30 p.m.

MBG Auditorium

**Come celebrate innovation at PPPL with inventor talks, trivia, snacks,
and a raffle for Plasma Hutch prizes!**

Invention Discovery Day

Tuesday, May 23

11:30 a.m.–12:30 p.m.

MBG Auditorium

**Come celebrate innovation at PPPL with inventor talks, trivia, snacks,
and a raffle for Plasma Hutch prizes!**

Invention Discovery Day

Tuesday, May 23

11:30 a.m.–12:30 p.m.

MBG Auditorium

**Come celebrate innovation at PPPL with inventor talks, trivia, snacks,
and a raffle for Plasma Hutch prizes!**

American Red Cross Blood Drive

Thursday, May 25
8 a.m.–1 p.m.

The blood mobile will be parked next to the warehouse near Mod 6 in the Lower Parking Lot. The check-in point will be the Mod 6 Conference Room.

Appointments are still available! Please call the OMO at ext. 3200 or go to redcrossblood.org and enter sponsor code PPPLPrinceton. You can make a difference! Your blood donation matters!

Thank you!

—American Red Cross, Occupational Medicine Office and Human Resources

American Red Cross Blood Drive

Thursday, May 25
8 a.m.–1 p.m.

The blood mobile will be parked next to the warehouse near Mod 6 in the Lower Parking Lot. The check-in point will be the Mod 6 Conference Room.

Appointments are still available! Please call the OMO at ext. 3200 or go to redcrossblood.org and enter sponsor code PPPLPrinceton. You can make a difference! Your blood donation matters!

Thank you!

—American Red Cross, Occupational Medicine Office and Human Resources

American Red Cross Blood Drive

Thursday, May 25
8 a.m.–1 p.m.

The blood mobile will be parked next to the warehouse near Mod 6 in the Lower Parking Lot. The check-in point will be the Mod 6 Conference Room.

Appointments are still available! Please call the OMO at ext. 3200 or go to redcrossblood.org and enter sponsor code PPPLPrinceton. You can make a difference! Your blood donation matters!

Thank you!

—American Red Cross, Occupational Medicine Office and Human Resources

Concrete floor of C-Site MG Building almost complete as IOI project continues



Concrete floor of C-Site MG Building almost complete as IOI project continues



Progress on LSB Annex as IOI project continues



A lunchtime bike ride for Bike Challenge Month



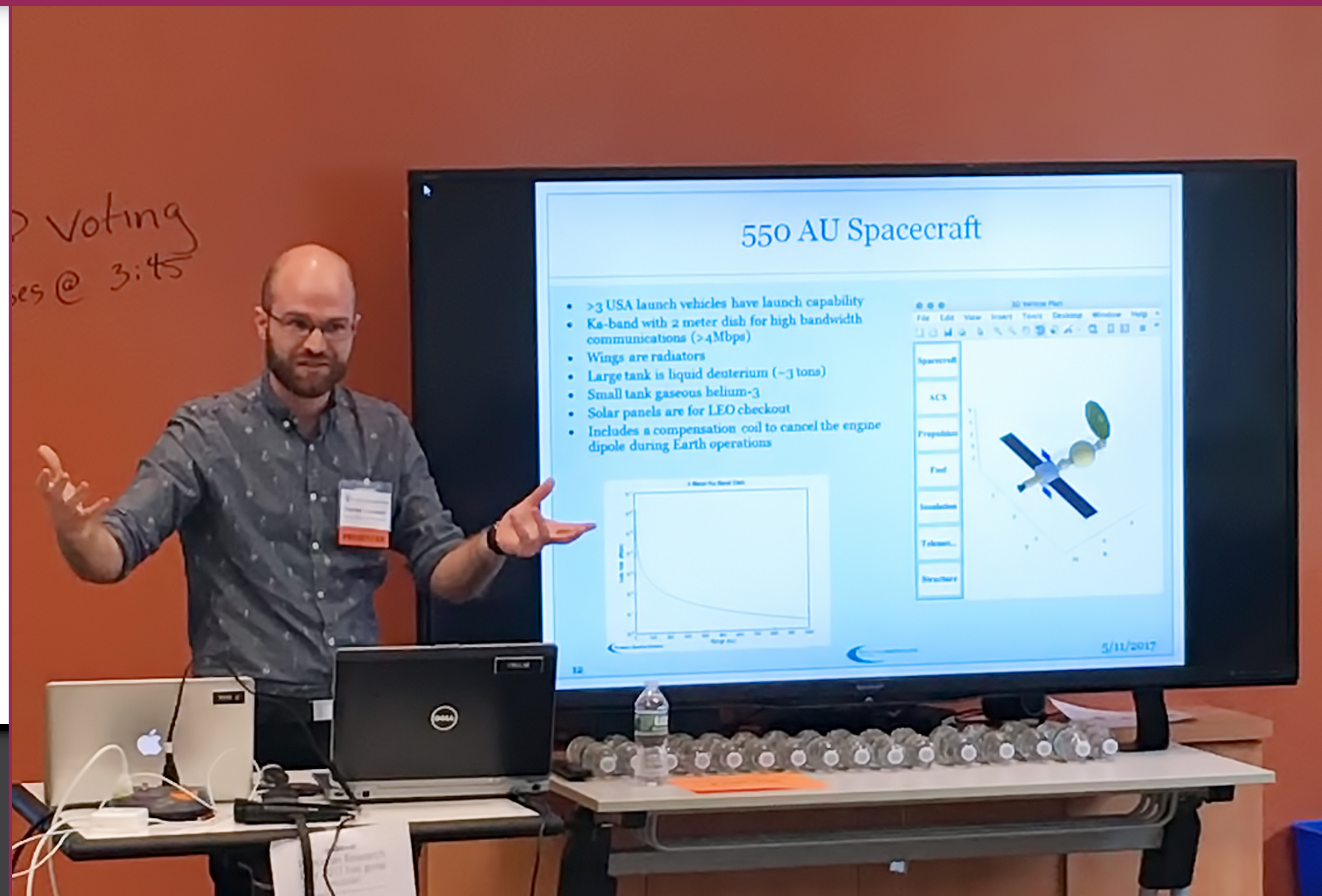
**You can join a ride on Wed., May 24 and Fri., May 26,
leaving from LSB at 11:45 a.m. Contact Rob Sheneman, ext. 3392.**

A lunchtime bike ride for Bike Challenge Month



**You can join a ride on Wed., May 24 and Fri., May 26,
leaving from LSB at 11:45 a.m. Contact Rob Sheneman, ext. 3392.**

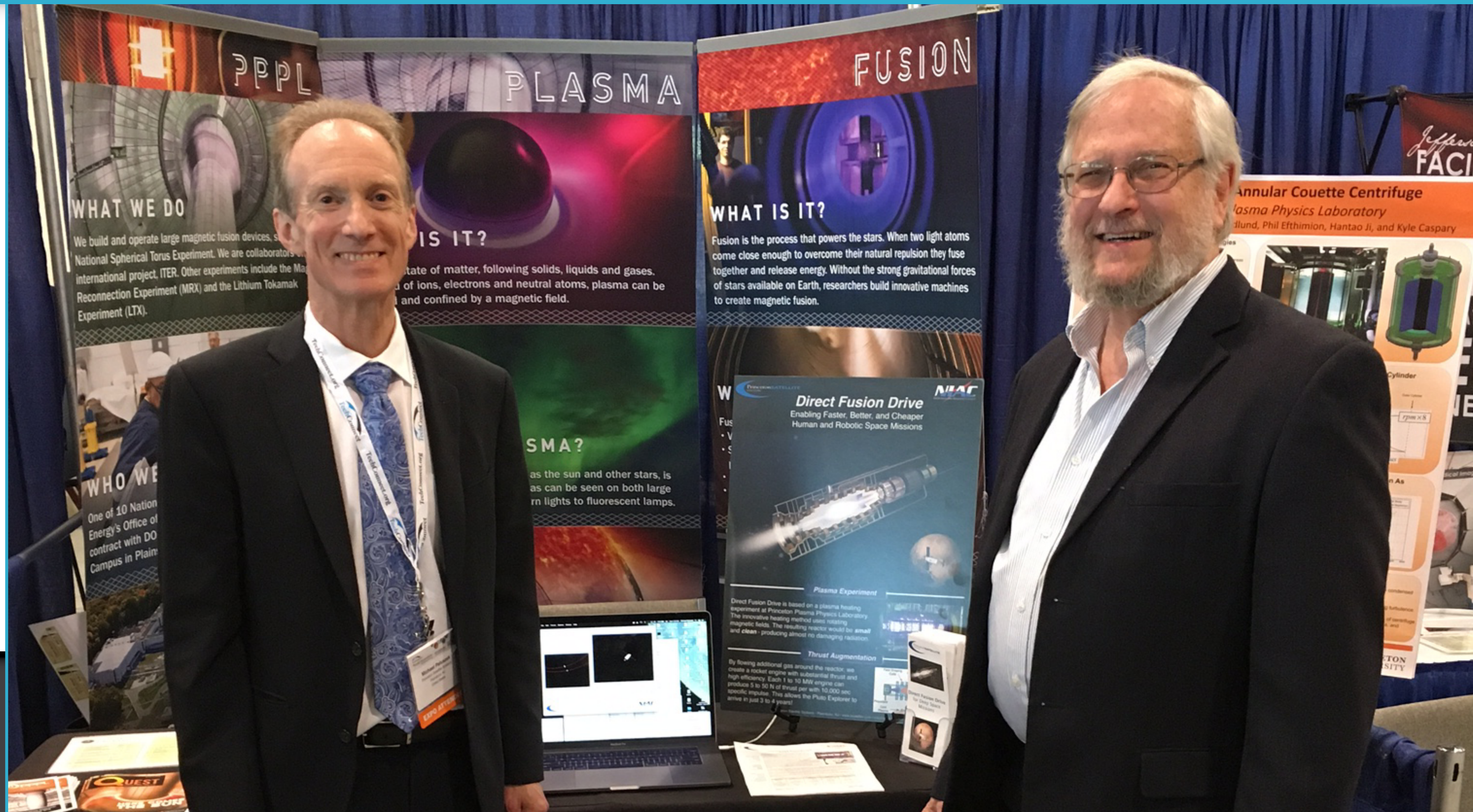
PPPL'ers take part in Princeton University's Research Day



PPPL inventors present at TechConnect World Innovation Conference & Expo near Washington, D.C.



PPPL inventors present at TechConnect World Innovation Conference & Expo near Washington, D.C.



Simon Marti, of the Embassy of Switzerland in the United States, tours PPPL.



BROCK

NICK PETTI

Chef Manager

Premier

Café

at PPPL

BREAKFAST 7 a.m. • 10 a.m.

CONTINENTAL BREAKFAST 10 a.m. • 11:30 a.m.

LUNCH 11:30 a.m. • 1:30 p.m.

SNACK SERVICE until 2:30 p.m.

	Monday May 22	Tuesday May 23	Wednesday May 24	Thursday May 25	Friday May 26
COMMAND PERFORMANCE Chef’s Feature	Chicken Francese over Pasta	Carved London Broil with Mashed Potatoes and Vegetable	Green Chili Chicken Burrito with Rice and Beans	Super Salad	Vegetable Chili over Rice with Cornbread
Early Riser	Bacon, Egg & Cheese Croissant	Biscuits with Sausage Gravy	Mango & Blueberry Pancakes served with Choice of Breakfast Meat	Turkey Bacon, Egg and Cheese Sandwich	2 Eggs, 2 Pancakes, Choice of Breakfast Meat & Potatoes
Country Kettle	Vegetable Noodle	Cream of Mushroom	Beef Barley	Tuscan Chicken and Pasta	Seafood Chowder
Deli Special	California Wrap	Caesar Turkey Wrap	Ham and Smoked Gouda with Pineapple Slaw	Portobello Mushroom & Fontina Cheese with Roasted Peppers on Ciabatta	Chicken, Mozzarella, Red Onion, Basil, Arugula and Balsamic Tomatoes on French Bread
Grille Special	Pico De Gallo Black Bean Burger with Avocado Sour Cream and Fries	Teriyaki Chicken Cheesesteak with Asian Slaw	Lamb Burger	Monte Cristo	Roast Vegetable Stromboli
Panini	Tomato, Fresh Mozzarella, Spinach and Pesto Flatbread	Spicy Italian Grinder	Cheddar, Bacon, and Apple Panini	Grilled Ham and Cheese on Texas Toast	Foot-long Chili Dog

MENU SUBJECT TO CHANGE WITHOUT NOTICE

HEART HEALTHY

VEGETARIAN OPTION

BROCK

NICK PETTI

Chef Manager

Premier



BREAKFAST 7 a.m. • 10 a.m.

CONTINENTAL BREAKFAST 10 a.m. • 11:30 a.m.

LUNCH 11:30 a.m. • 1:30 p.m.

SNACK SERVICE until 2:30 p.m.

	Monday May 22	Tuesday May 23	Wednesday May 24	Thursday May 25	Friday May 26
COMMAND PERFORMANCE Chef’s Feature	Chicken Francese over Pasta	Carved London Broil with Mashed Potatoes and Vegetable	Green Chili Chicken Burrito with Rice and Beans	Super Salad	Vegetable Chili over Rice with Cornbread
Early Riser	Bacon, Egg & Cheese Croissant	Biscuits with Sausage Gravy	Mango & Blueberry Pancakes served with Choice of Breakfast Meat	Turkey Bacon, Egg and Cheese Sandwich	2 Eggs, 2 Pancakes, Choice of Breakfast Meat & Potatoes
Country Kettle	Vegetable Noodle	Cream of Mushroom	Beef Barley	Tuscan Chicken and Pasta	Seafood Chowder
Deli Special	California Wrap	Caesar Turkey Wrap	Ham and Smoked Gouda with Pineapple Slaw	Portobello Mushroom & Fontina Cheese with Roasted Peppers on Ciabatta	Chicken, Mozzarella, Red Onion, Basil, Arugula and Balsamic Tomatoes on French Bread
Grille Special	Pico De Gallo Black Bean Burger with Avocado Sour Cream and Fries	Teriyaki Chicken Cheesesteak with Asian Slaw	Lamb Burger	Monte Cristo	Roast Vegetable Stromboli
Panini	Tomato, Fresh Mozzarella, Spinach and Pesto Flatbread	Spicy Italian Grinder	Cheddar, Bacon, and Apple Panini	Grilled Ham and Cheese on Texas Toast	Foot-long Chili Dog

MENU SUBJECT TO CHANGE WITHOUT NOTICE

HEART HEALTHY

VEGETARIAN OPTION

BROCK

NICK PETTI

Chef Manager

Premier

Café

at PPPL

BREAKFAST 7 a.m. • 10 a.m.

CONTINENTAL BREAKFAST 10 a.m. • 11:30 a.m.

LUNCH 11:30 a.m. • 1:30 p.m.

SNACK SERVICE until 2:30 p.m.

	Monday May 22	Tuesday May 23	Wednesday May 24	Thursday May 25	Friday May 26
COMMAND PERFORMANCE Chef's Feature	Chicken Francese over Pasta	Carved London Broil with Mashed Potatoes and Vegetable	Green Chili Chicken Burrito with Rice and Beans	Super Salad	Vegetable Chili over Rice with Cornbread
Early Riser	Bacon, Egg & Cheese Croissant	Biscuits with Sausage Gravy	Mango & Blueberry Pancakes served with Choice of Breakfast Meat	Turkey Bacon, Egg and Cheese Sandwich	2 Eggs, 2 Pancakes, Choice of Breakfast Meat & Potatoes
Country Kettle	Vegetable Noodle	Cream of Mushroom	Beef Barley	Tuscan Chicken and Pasta	Seafood Chowder
Deli Special	California Wrap	Caesar Turkey Wrap	Ham and Smoked Gouda with Pineapple Slaw	Portobello Mushroom & Fontina Cheese with Roasted Peppers on Ciabatta	Chicken, Mozzarella, Red Onion, Basil, Arugula and Balsamic Tomatoes on French Bread
Grille Special	Pico De Gallo Black Bean Burger with Avocado Sour Cream and Fries	Teriyaki Chicken Cheesesteak with Asian Slaw	Lamb Burger	Monte Cristo	Roast Vegetable Stromboli
Panini	Tomato, Fresh Mozzarella, Spinach and Pesto Flatbread	Spicy Italian Grinder	Cheddar, Bacon, and Apple Panini	Grilled Ham and Cheese on Texas Toast	Foot-long Chili Dog

MENU SUBJECT TO CHANGE WITHOUT NOTICE

HEART HEALTHY

VEGETARIAN OPTION