



**November 6-12, 2017**

# State of the Laboratory

**Richard Hawryluk, PPPL's interim director, will give the State of the Laboratory address on Tuesday, Nov. 7, at 1:30 p.m. in the MBG Auditorium.**

**Refreshments will be served in the LSB lobby after the talk.**



# State of the Laboratory

**Richard Hawryluk, PPPL's interim director, will give the State of the Laboratory address on Tuesday, Nov. 7, at 1:30 p.m. in the MBG Auditorium.**

**Refreshments will be served in the LSB lobby after the talk.**

# State of the Laboratory

**Richard Hawryluk, PPPL's interim director, will give the State of the Laboratory address on Tuesday, Nov. 7, at 1:30 p.m. in the MBG Auditorium.**

**Refreshments will be served in the LSB lobby after the talk.**

# **Environmental Management Systems Audit of PPPL**

**Monday, Nov. 6 to  
Thursday, Nov. 10**

# **Environmental Management Systems Audit of PPPL**

**Monday, Nov. 6 to  
Thursday, Nov. 10**

# **Travel Office Lunch and Learn on new Travel Manual**

**Kristen Fischer, PPPL's chief financial officer, and PPPL's Travel Office will hold a Lunch and Learn about PPPL's newly-revised Travel Manual on Monday, Nov. 6, at noon in the MBG Auditorium.**

# **Travel Office Lunch and Learn on new Travel Manual**

**Kristen Fischer, PPPL's chief financial officer, and PPPL's Travel Office will hold a Lunch and Learn about PPPL's newly-revised Travel Manual on Monday, Nov. 6, at noon in the MBG Auditorium.**

# Council Café Lunch

This Week:

**Marc Cohen,**  
Interim Head of  
Information Technology



Wednesday, Nov. 8  
12 p.m., PPPL Café

*Next Week: Andrew Zwicker*



# Council Café Lunch

This Week:

**Marc Cohen,**  
Interim Head of  
Information Technology



Wednesday, Nov. 8  
12 p.m., PPPL Café

*Next Week: Andrew Zwicker*



# COLLOQUIUM

## Ras Labs-CASIS-ISS NL Synthetic Muscle™ Experiment Returned to Earth: Resistance to Radiation

**Lenore Rasmussen**

Ras Labs, Inc.

**Wednesday, Nov. 8**

**4:15 p.m., M.B.G. Auditorium, Lyman Spitzer Building**

# COLLOQUIUM

## Ras Labs-CASIS-ISS NL Synthetic Muscle™ Experiment Returned to Earth: Resistance to Radiation

**Lenore Rasmussen**

Ras Labs, Inc.

**Wednesday, Nov. 8**

**4:15 p.m., M.B.G. Auditorium, Lyman Spitzer Building**

# COLLOQUIUM

Ras Labs-CASIS-ISS NL Synthetic  
Muscle™ Experiment Returned to  
Earth: Resistance to Radiation

**Lenore Rasmussen**

Ras Labs, Inc.

**Wednesday, Nov. 8**

**4:15 p.m., M.B.G. Auditorium, Lyman Spitzer Building**

# **Veteran's Day Service**

**Friday, Nov. 10  
at 8:30 a.m.**

**Princeton University Chapel**

# **Veteran's Day Service**

**Friday, Nov. 10  
at 8:30 a.m.**

**Princeton University Chapel**

**Annual Benefits  
Open Enrollment**

**Through Friday,  
Nov. 10**



# Youngsters learn about plasma at PPPL's APS-DPP Plasma Science Expo booth





# Youngsters learn about plasma at PPPL's APS-DPP Plasma Science Expo booth



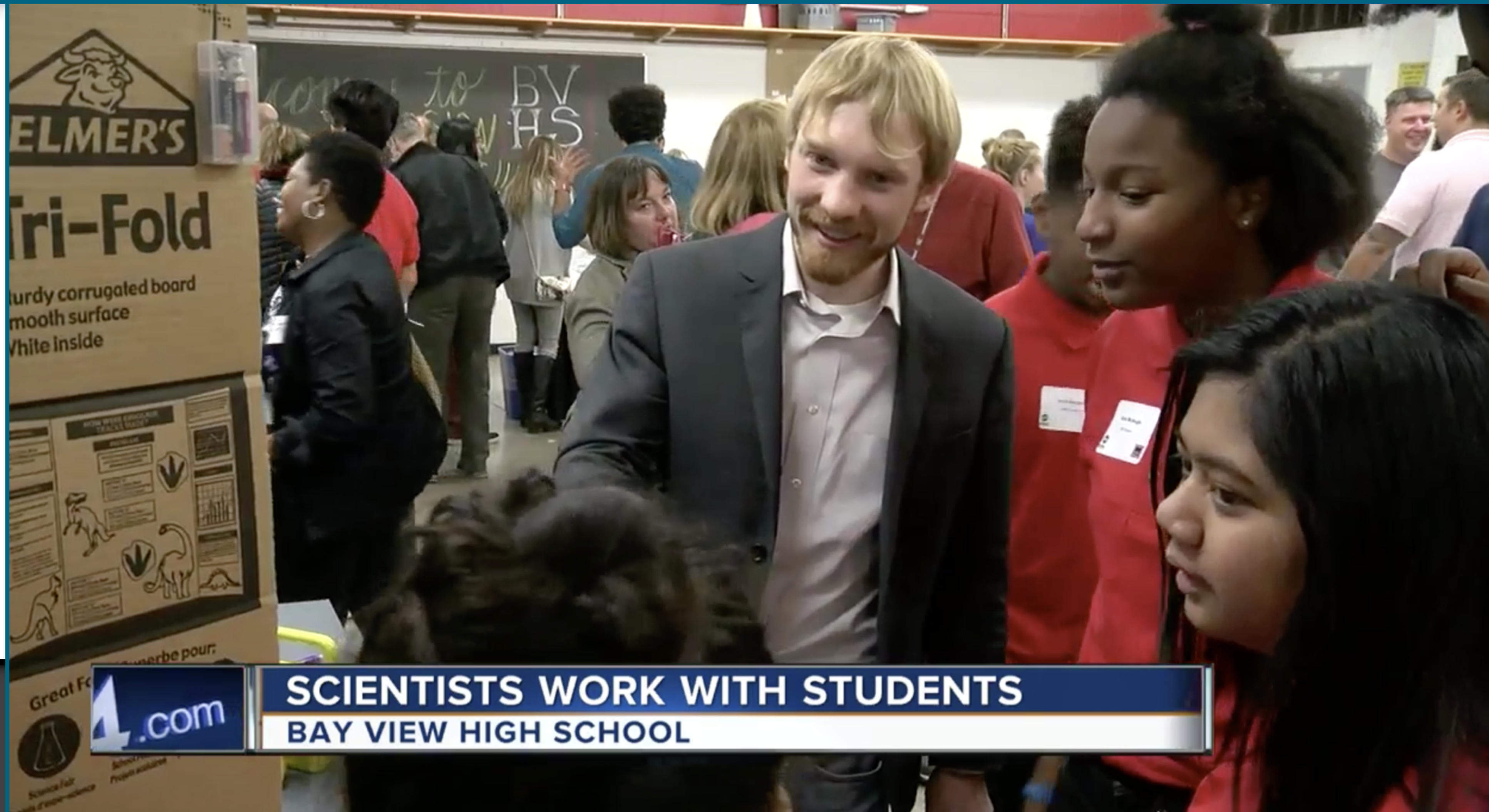


# Youngsters learn about plasma at PPPL's APS-DPP Plasma Science Expo booth



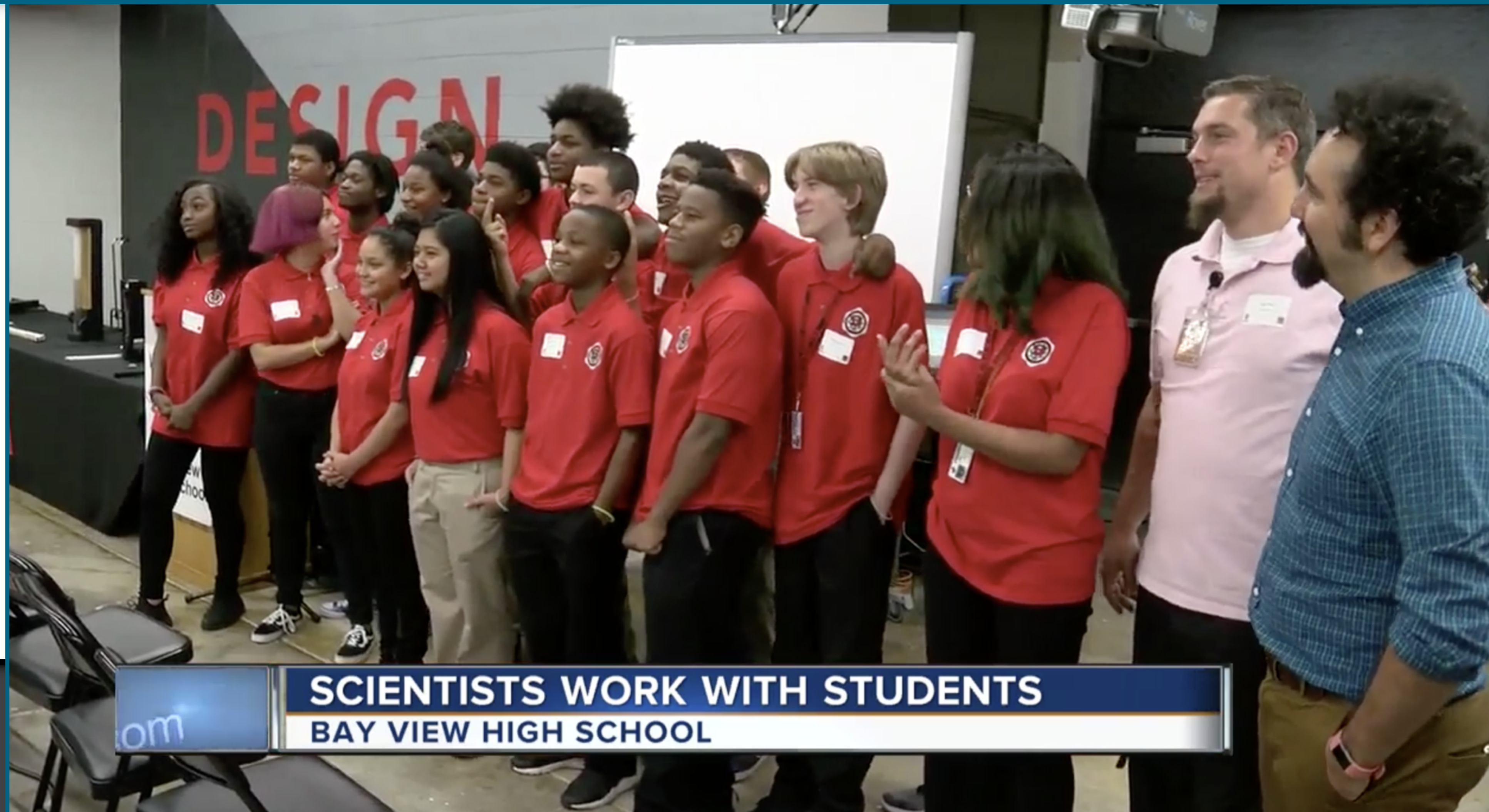


# Milwaukee TV news features PPPL'ers in segment on scientists' outreach to high school





# Milwaukee TV news features PPPL'ers in segment on scientists' outreach to high school





# PPPL hosts scientists from Japan and Southwest Jiaotong University in Chengdu, China





# PPPL hosts scientists from Japan and Southwest Jiaotong University in Chengdu, China





# PPPL'ers get ghoulish for Halloween





# PPPL'ers get ghoulish for Halloween





# PPPL'ers get ghoulish for Halloween



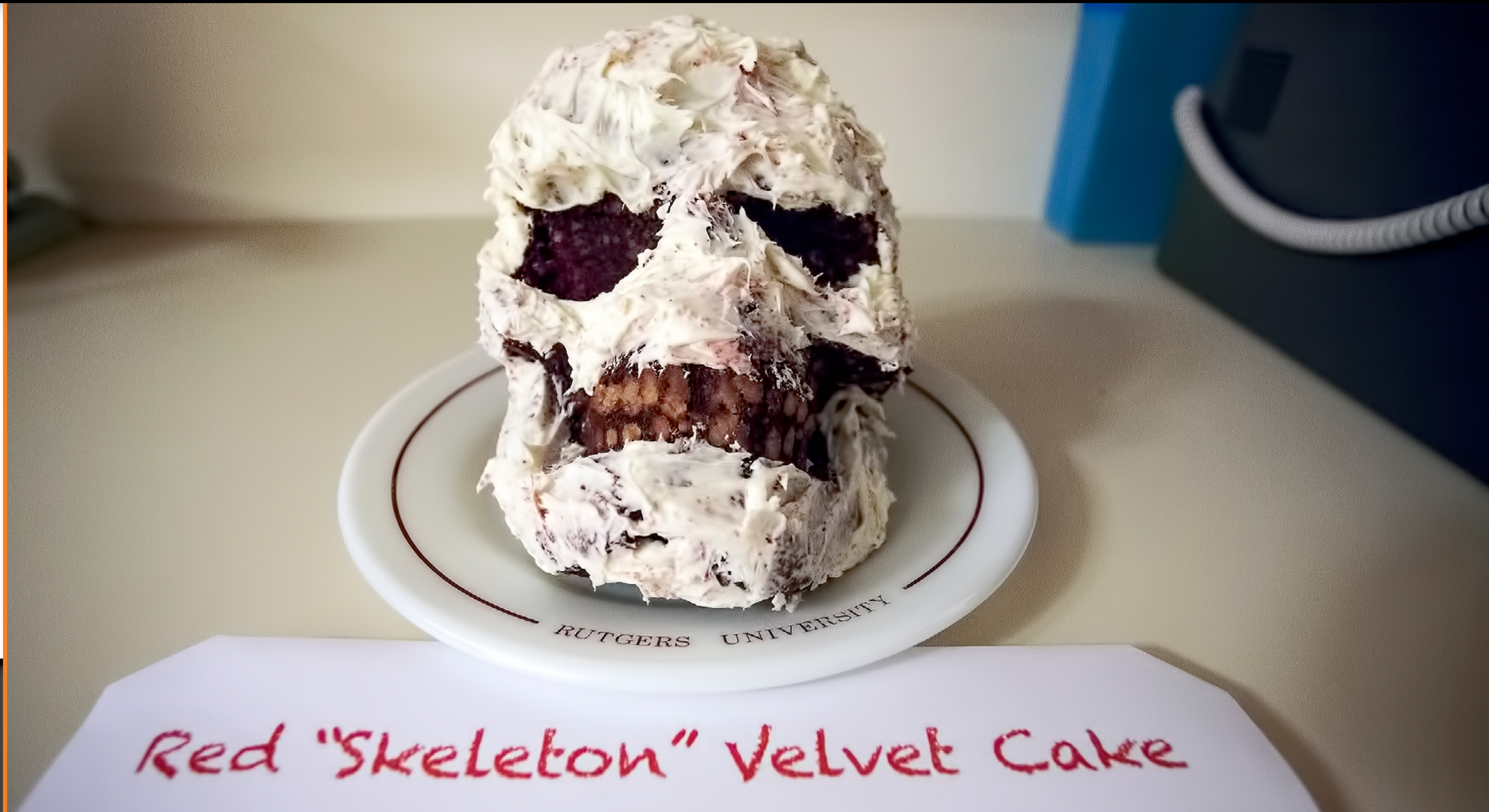


# PPPL'ers get ghoulish for Halloween





# PPPL'ers get ghoulish for Halloween





IOI is in final phase





# IOI is in final phase





**IOI is in final phase**





# **Register your future scientist for the 2018 Young Women's Conference**

**Check your email for registration information on the March 22, 2018 Young Women's Conference in STEM at Princeton University, for seventh to tenth graders. Registration is open to 50 PPPL employee relatives.**

# **Register your future scientist for the 2018 Young Women's Conference**

**Check your email for registration information on the March 22, 2018 Young Women's Conference in STEM at Princeton University, for seventh to tenth graders. Registration is open to 50 PPPL employee relatives.**

# **Celebrate PPPL's Inventor Hall of Fame**

**Come celebrate PPPL's Inventor  
Hall of Fame, Monday, Nov. 20, at  
1:30 p.m. in the LSB Lobby.**

**Cake and coffee will be served.**



# **Celebrate PPPL's Inventor Hall of Fame**

**Come celebrate PPPL's Inventor  
Hall of Fame, Monday, Nov. 20, at  
1:30 p.m. in the LSB Lobby.**

**Cake and coffee will be served.**

# PPPL celebrates America Recycles Day

**Mark your calendar for America Recycles Day events the week of Nov. 13 and on America Recycles Day Nov. 15.**

**Events include:**

- A recycling art contest
- Clothing drive
- Unicor electronics collection
- Get caught green-handed

# PPPL celebrates America Recycles Day

**Mark your calendar for America Recycles Day events the week of Nov. 13 and on America Recycles Day Nov. 15.**

**Events include:**

- A recycling art contest
- Clothing drive
- Unicor electronics collection
- Get caught green-handed

# PPPL celebrates America Recycles Day

## Recycling Art contest

Enter the 2017 Recycling Art contest! Winners will receive a prize and entries will be on display in the LSB lobby Nov. 13-15. Contact Margaret Kevin-King, ext. 3652 or Leanna Sullivan, ext. 2599 for more information.

# PPPL celebrates America Recycles Day

## Recycling Art contest

Enter the 2017 Recycling Art contest! Winners will receive a prize and entries will be on display in the LSB lobby Nov. 13-15. Contact Margaret Kevin-King, ext. 3652 or Leanna Sullivan, ext. 2599 for more information.

# **PPPL celebrates America Recycles Day**

## **Clothing Drive**

**Please donate your gently used clothing to the Trenton Rescue Mission through Nov. 21. Bins are located in the LSB lobby and lower parking lot entrance.**

# **PPPL celebrates America Recycles Day**

## **Clothing Drive**

**Please donate your gently used clothing to the Trenton Rescue Mission through Nov. 21. Bins are located in the LSB lobby and lower parking lot entrance.**

# **PPPL celebrates America Recycles Day**

## **Unicor electronics recycling collection**

**On Nov. 15, please bring your home electronics for recycling to the Warehouse by the roll-up door across from the firehouse 7:30–10 a.m.**



# **PPPL celebrates America Recycles Day**

## **Unicor electronics recycling collection**

**On Nov. 15, please bring your home electronics for recycling to the Warehouse by the roll-up door across from the firehouse 7:30–10 a.m.**

**Make an  
appointment for  
your flu shot**

**Protect yourself from  
influenza and avoid  
spreading the illness to  
others by getting a flu shot.  
Please call the OMO at  
ext. 3200 to schedule an  
appointment.**



**Make an  
appointment for  
your flu shot**

**Protect yourself from  
influenza and avoid  
spreading the illness to  
others by getting a flu shot.  
Please call the OMO at  
ext. 3200 to schedule an  
appointment.**

BROCK

NICK PETTI

Chef Manager

Premier

Café

at PPPL

BREAKFAST ..... 7 a.m. • 10 a.m.

CONTINENTAL BREAKFAST ..... 10 a.m. • 11:30 a.m.

LUNCH ..... 11:30 a.m. • 1:30 p.m.

SNACK SERVICE ..... until 2:30 p.m.

	Monday Nov. 6	Tuesday Nov. 7	Wednesday Nov. 8	Thursday Nov. 9	Friday Nov. 10
COMMAND PERFORMANCE Chef’s Feature	Beef Stew over Egg Noodles	Baked Potato Bar	Fried Chicken and a Biscuit	“Super Salad”	Tortellini Primavera with Garlic Bread
Early Riser	Bacon, Egg & Cheese Croissant	Sausage, Egg and Cheese Biscuit	Chocolate Chip Pancakes served with Choice of Breakfast Meat	Ham, Egg and Cheese Sandwich	2 Eggs, 1 Pancake, Choice of Breakfast Meat & Potatoes
Country Kettle	Vegetable Noodle	Beef Barley	Cream of Mushroom	Tuscan Chicken and Pasta	Seafood Chowder
Deli Special	California Wrap	Hummus Turkey Wrap	Buffalo Chicken Salad Wrap	Grilled Ham and Cheese on Texas Toast	Chicken, Mozzarella, Red Onion, Basil, Arugula and Balsamic Tomatoes on French Bread
Grille Special	Patty Melt	Shrimp Tacos	Pork Torta on Ciabatta	Portobello Mushroom Cheese “Steak”	Monte Cristo
Panini	Tomato, Fresh Mozzarella, Spinach and Pesto Hoagie	Grilled Eggplant, Spinach and Tomato Parmesan with Caesar Salad	Clam Strip Po’ Boy	Sausage and Peppers	Cuban Sandwich

MENU SUBJECT TO CHANGE WITHOUT NOTICE

HEART HEALTHY

VEGETARIAN OPTION

BROCK

NICK PETTI

Chef Manager

Premier



BREAKFAST ..... 7 a.m. • 10 a.m.  
CONTINENTAL BREAKFAST ..... 10 a.m. • 11:30 a.m.  
LUNCH ..... 11:30 a.m. • 1:30 p.m.  
SNACK SERVICE ..... until 2:30 p.m.

	Monday Nov. 6	Tuesday Nov. 7	Wednesday Nov. 8	Thursday Nov. 9	Friday Nov. 10
COMMAND PERFORMANCE Chef’s Feature	Beef Stew over Egg Noodles	Baked Potato Bar	Fried Chicken and a Biscuit	“Super Salad”	Tortellini Primavera with Garlic Bread
Early Riser	Bacon, Egg & Cheese Croissant	Sausage, Egg and Cheese Biscuit	Chocolate Chip Pancakes served with Choice of Breakfast Meat	Ham, Egg and Cheese Sandwich	2 Eggs, 1 Pancake, Choice of Breakfast Meat & Potatoes
Country Kettle	Vegetable Noodle	Beef Barley	Cream of Mushroom	Tuscan Chicken and Pasta	Seafood Chowder
Deli Special	California Wrap	Hummus Turkey Wrap	Buffalo Chicken Salad Wrap	Grilled Ham and Cheese on Texas Toast	Chicken, Mozzarella, Red Onion, Basil, Arugula and Balsamic Tomatoes on French Bread
Grille Special	Patty Melt	Shrimp Tacos	Pork Torta on Ciabatta	Portobello Mushroom Cheese “Steak”	Monte Cristo
Panini	Tomato, Fresh Mozzarella, Spinach and Pesto Hoagie	Grilled Eggplant, Spinach and Tomato Parmesan with Caesar Salad	Clam Strip Po’ Boy	Sausage and Peppers	Cuban Sandwich

MENU SUBJECT TO CHANGE WITHOUT NOTICE

HEART HEALTHY

VEGETARIAN OPTION



BROCK

NICK PETTI

Chef Manager

Premier



BREAKFAST ..... 7 a.m. • 10 a.m.

CONTINENTAL BREAKFAST ..... 10 a.m. • 11:30 a.m.

LUNCH ..... 11:30 a.m. • 1:30 p.m.

SNACK SERVICE ..... until 2:30 p.m.

	Monday Nov. 6	Tuesday Nov. 7	Wednesday Nov. 8	Thursday Nov. 9	Friday Nov. 10
COMMAND PERFORMANCE Chef’s Feature	Beef Stew over Egg Noodles	Baked Potato Bar	Fried Chicken and a Biscuit	“Super Salad”	Tortellini Primavera with Garlic Bread
Early Riser	Bacon, Egg & Cheese Croissant	Sausage, Egg and Cheese Biscuit	Chocolate Chip Pancakes served with Choice of Breakfast Meat	Ham, Egg and Cheese Sandwich	2 Eggs, 1 Pancake, Choice of Breakfast Meat & Potatoes
Country Kettle	Vegetable Noodle	Beef Barley	Cream of Mushroom	Tuscan Chicken and Pasta	Seafood Chowder
Deli Special	California Wrap	Hummus Turkey Wrap	Buffalo Chicken Salad Wrap	Grilled Ham and Cheese on Texas Toast	Chicken, Mozzarella, Red Onion, Basil, Arugula and Balsamic Tomatoes on French Bread
Grille Special	Patty Melt	Shrimp Tacos	Pork Torta on Ciabatta	Portobello Mushroom Cheese “Steak”	Monte Cristo
Panini	Tomato, Fresh Mozzarella, Spinach and Pesto Hoagie	Grilled Eggplant, Spinach and Tomato Parmesan with Caesar Salad	Clam Strip Po’ Boy	Sausage and Peppers	Cuban Sandwich

MENU SUBJECT TO CHANGE WITHOUT NOTICE

HEART HEALTHY

VEGETARIAN OPTION