

Laboratory study of the failed torus mechanism in arched, line-tied, magnetic flux ropes

Cite as: Phys. Plasmas **30**, 042901 (2023); doi: [10.1063/5.0137457](https://doi.org/10.1063/5.0137457)

Submitted: 2 December 2022 · Accepted: 1 March 2023 ·

Published Online: 13 April 2023



View Online



Export Citation



CrossMark

Andrew Alt,^{1,2,a)}  Hantao Ji,^{1,2}  Jongsoo Yoo,²  Sayak Bose,²  Aaron Goodman,^{1,2}  and Masaaki Yamada² 

AFFILIATIONS

¹Department of Astrophysical Sciences, Princeton University, Peyton Hall, Princeton, New Jersey 08544, USA

²Princeton Plasma Physics Laboratory, PO Box 451, Princeton, New Jersey 08543, USA

^{a)}Author to whom correspondence should be addressed: aalt@pppl.gov

ABSTRACT

Coronal mass ejections (CMEs) are some of the most energetic and violent events in our solar system. The prediction and understanding of CMEs are of particular importance due to the impact that they can have on Earth-based satellite systems and, in extreme cases, ground-based electronics. CMEs often occur when long-lived magnetic flux ropes (MFRs) anchored to the solar surface destabilize and erupt away from the Sun. One potential cause for these eruptions is an ideal magnetohydrodynamic (MHD) instability, such as the kink or torus instability. Previous experiments on the magnetic reconnection experiment revealed a class of MFRs that were torus-unstable but kink-stable, which failed to erupt. These “failed-tori” went through a process similar to Taylor relaxation, where the toroidal current was redistributed before the eruption ultimately failed. We have investigated this behavior through additional diagnostics that measure the current distribution at the foot points and the energy distribution before and after an event. These measurements indicate that ideal MHD effects are sufficient to explain the energy distribution changes during failed torus events. This excludes Taylor relaxation as a possible mechanism of current redistribution during an event. A new model that only requires non-ideal effects in a thin layer above the electrodes is presented to explain the observed phenomena. This work broadens our understanding of the stability of MFRs and the mechanism behind the failed torus through the improved prediction of the torus instability and through new diagnostics to measure the energy inventory and current profile at the foot points.

Published under an exclusive license by AIP Publishing. <https://doi.org/10.1063/5.0137457>

I. INTRODUCTION

The study of astrophysical phenomena is often accomplished via remote ground- and space-based observations and numerical simulations.^{1–3} Many insights can be learned from both of these approaches, but they also have their limitations and difficulties. The remote nature of observations limits the available diagnostics, and since one does not have control over the events, individual parameters cannot be adjusted to study the results in isolation. While simulations can control individual parameters and isolate specific phenomena, computational considerations require approximations that can limit the available physics. In this paper, laboratory experiments are used to create models of astrophysical phenomena so that they can be studied *in situ*. This allows for fine control of experimental parameters and for the use of a wide array of plasma diagnostics. The experiments presented here focus on the study of solar eruptions and the resulting coronal mass ejections (CMEs). These events lead to space weather, which can be hazardous to Earth-based satellites as well as sensitive ground-based equipment.⁴ Therefore, understanding and predicting space weather phenomena

have been identified as a subject of great scientific interest.⁵ The experiments presented here allow for new physics insight that is required for better predictions of space weather events but are difficult to obtain otherwise.

CMEs often occur when long-lasting magnetic flux ropes (MFRs) protruding from the Sun suddenly and violently erupt.^{6,7} These arched structures are bundles of twisted magnetic-field lines anchored to the solar surface via line-tying to the conductive photosphere.^{8–10} The trigger for an eruption in an MFR is often cast in terms of two ideal magnetohydrodynamic (MHD) instabilities, the kink and torus instabilities. These instabilities have long been studied in asymmetric devices, such as tokamaks;^{11,12} however, they can also be extended to arched MFRs.^{13,14} Previous experiments found a class of MFRs that were torus-unstable and kink-stable which failed to erupt.¹⁵ These “failed torus” ropes would begin to rise; then, the toroidal current would reorganize to become more hollow before the rope would collapse down, failing to erupt. Understanding the cause of the failed torus would help in future predictions of confined eruptions on the Sun.

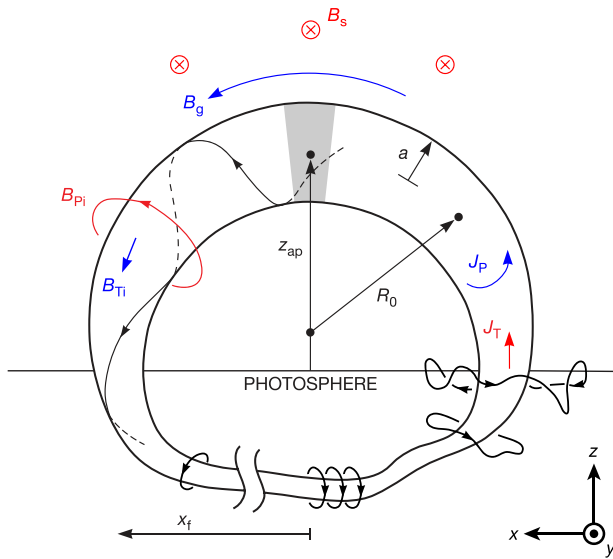


FIG. 1. A model of an arched, line-tied magnetic flux rope, showing the breakdown of the fields and currents based on the direction and source. The line-tying condition at the conducting photosphere causes the foot points to be anchored with a separation of $2x_f$. The internal fields, B_{PI} and B_{TI} , are generated by the currents in the rope, while the external fields, B_s and B_g , are generated by the Sun. Reproduced with permission from Myers *et al.*, *Phys. Plasmas* **23**, 112102 (2016). Copyright 2016 AIP Publishing; and adapted with permission from Chen, *Astrophys. J.* **338**, 453 (1989). Copyright 1989 American Astronomical Society and Chen and Krall, *J. Geophys. Res. Space* **108**, 1410 (2003). Copyright 2003 American Geophysical Union.

The previous description of the failed torus was that a self-organization event, such as Taylor relaxation, would occur.¹⁶ This would exchange toroidal and poloidal fluxes while maintaining the helicity, requiring non-ideal effects of magnetic reconnection.

The remainder of this paper has the following organizational structure: Sec. II describes the relevant forces and MHD instabilities that can occur in MFRs and then summarizes the previously observed failed torus regime. Section III describes the experimental setup including the new diagnostics added for this work. Here, we will also present an overview of the parameter space that is reachable in our experiment. The remaining sections examine the Taylor relaxation explanation of the failed torus and find that based on the energy inventory (Sec. IV), ideal MHD must hold during events. This rules out the possibility of Taylor relaxation, which requires reconnection within the rope. Section V validates the current hollowing throughout a failed

torus rope and compares the foot-point current distribution of different regimes. Section VI then presents a mechanism through which we can explain the changes in toroidal flux without violating ideal MHD except for a small region above the foot points. Section VII examines the change in toroidal field profile during events. Together, these provide a sufficient mechanism to explain the failed torus. This section also discusses how these results can be extended to the conditions on the Sun.

II. FLUX ROPES AND ASSOCIATED INSTABILITIES

In an MFR, the magnetic field, \mathbf{B} , and electric currents, \mathbf{J} , of an MFR can be broken up into components based on their direction and source as shown in Fig. 1. First, \mathbf{J} can be divided into toroidal, T, and poloidal, P, components. Then, \mathbf{B} can be separated into two components: internal and external. The internal field is generated by currents within the MFR, while the external field is generated by currents within the Sun. The internal field is further divided into toroidal and poloidal components. The external field is divided into the guide field, \mathbf{B}_g , along the axis of the rope and the strapping field, \mathbf{B}_s , perpendicular to this axis.

The dominant force on a low- β plasma, such as an MFR, is the $\mathbf{J} \times \mathbf{B}$ force. Here, $\beta \equiv 2\mu_0 P/B^2$ is the ratio of thermal to magnetic energy in the plasma, P is the plasma pressure, and μ_0 is the permeability of free space. This force can be decomposed based on the components of the source terms discussed above. These forces are called the hoop, strapping, and tension forces and are defined in Table I. The tension and strapping forces hold a rope down, while the hoop force causes it to expand upward.

A. The tension force

Of particular importance to this work is the tension force, F_t , caused by the poloidal current and toroidal field, $f_t = -J_P B_T$. The tension force is caused by the helical winding of current around a torus. The force in the direction of the major radius, R , is directed inward on the inboard side of the torus and is directed outward on the outboard side. However, since the number of current windings must be the same on both sides, both J_P and B_T are larger on the inboard side. When the R -directed force is averaged over a poloidal cross section, the net force is directed inward to the center of the torus.

When F_t is simplified using the large-aspect-ratio approximation in a full torus, it is given by Alt¹⁸

$$F_t = -\frac{\mu_0 I_T^2}{8\pi R_0} \left[\frac{\langle B_T^2 \rangle - B_{g0}^2}{B_{Pa}^2} \right], \quad (1)$$

TABLE I. Breakdown of forces on a flux rope. The forces are separated by contributions to the $\mathbf{J} \times \mathbf{B}$ term. The fields and currents used are shown in Fig. 1, and the analytical expressions are derived in Myers *et al.*¹⁷. Reproduced with permission from Myers *et al.*, *Phys. Plasmas* **23**, 112102 (2016). Copyright 2016 AIP Publishing.

Force	Symbol	Source Term	Analytical Expression
Hoop force (upward)	F_h	$f_h = J_T B_{PI}$	$F_h = \frac{\mu_0 I_T^2}{4\pi R} \left[\ln \left(\frac{8R}{a} \right) - 1 + \frac{\ell_1}{2} \right]$
Strapping force (downward)	F_s	$f_s = -J_T B_s$	$F_s = -I_T B_{s0}$
Tension force (downward)	F_t	$f_t = -J_P B_T$	$F_t = \frac{-\mu_0 I_T^2}{8\pi R} \left[\frac{\langle B_T^2 \rangle - B_{g0}^2}{B_{Pa}^2} \right] \approx -\frac{1}{2} \frac{\mu_0 I_T^2}{4\pi R}$

where $\langle \dots \rangle$ denotes cross-sectional averaging, R_0 is the major radius, I_T is the total toroidal current, B_{g0} is the edge guide field, $B_{pa} \equiv \mu_0 I_T / (2\pi a)$ is the edge poloidal field, and a is the minor radius. Here, we see that a downward tension force is caused by a paramagnetic toroidal field within the rope.

B. The torus instability

The torus instability occurs when the net force on an MFR increases as it is displaced upward away from equilibrium^{12,14,19}

$$\sum_i F_i = 0 \Big|_{z=z_{ap}} \quad \text{and} \quad \sum_i \frac{\partial F_i}{\partial z} > 0 \Big|_{z=z_{ap}}, \quad (2)$$

where F_i are the constituent forces given in Table 1 and z_{ap} is the equilibrium height of the rope's apex. It is sometimes described as a loss-of-equilibrium via a "catastrophe" mechanism.¹⁹

The torus instability was first studied in the context of fusion devices, where the role of the external strapping field, B_s , is played by the applied vertical field.¹² Since the main inward force is caused by B_s , the torus instability criterion is often cast in terms of the decay index of this field²⁰

$$n_s = -\frac{z}{B_s} \frac{\partial F_i}{\partial z} z B_s > n_{cr}, \quad (3)$$

where z is the height above the photosphere and $n_{cr} = 1.5$ in an axisymmetric, large aspect ratio, full torus.¹⁴ When previous MFR experiments were translated to the conditions on the Sun, a lower value of $n_{cr} \approx 0.9$ has been observed in the partial tori of arched MFRs.²¹ If B_s decays faster than this critical value, the torus instability can occur.

C. The kink instability

The kink instability is another ideal MHD instability that can affect MFRs.^{11,13,22} The instability occurs when I_T is too large, or equivalently, B_g is too small, such that the field lines at the edge of the rope become too twisted around the axis. When the field lines at the edge of the rope become too twisted around the axis, the instability can occur. This twisting can be described in terms of the edge safety factor, q_a , or equivalently, the twist number N ,

$$q_a \equiv \frac{1}{|N|} = \frac{2\pi a B_{g0}}{L B_{pa}} < q_{cr}, \quad (4)$$

where L is the length of the MFR. For toroidally symmetric fusion devices, the critical safety factor is $q_{cr} = 1$.^{11,22} However, in previous MFR experiments where toroidal symmetry is broken by line-tying, a lower critical value of $q_{cr} \approx 0.8$ has been observed.¹⁷ When the kink instability onsets, it causes the axis of a rope to tilt and begin to rotate. However, the instability saturates nonlinearly at relatively small amplitudes and, therefore, cannot be the sole cause of eruptions.

D. Observations of failed tori in previous experiments

In a previous experimental campaign, a class of ropes that were torus-unstable but kink-stable were observed failing to erupt.¹⁵ This regime is referred to as the failed torus regime, and an example MFR is shown in Fig. 2. Since the rope is initially unstable to the torus instability, the apex begins to rise. However, before a full eruption can occur, the toroidal current profile becomes more hollow, causing the toroidal flux

to increase. This flux increase causes a spike in the tension force [due to Eq. (1)], and the rope collapses back down to a lower height.^{15,23}

The reorganization that occurs and increases the toroidal flux simultaneously decreases the poloidal flux. This can be explained by the conservation of helicity, which describes the linking of these two fluxes. Magnetic helicity measures the linking of magnetic field lines and is given by $H = \int \mathbf{A} \cdot \mathbf{B} dV$,^{16,24} where \mathbf{A} is the vector potential defined such that $\nabla \times \mathbf{A} = \mathbf{B}$. In order for H to be gauge invariant, the integral must be carried out over a simply connected volume, V , whose boundary, S , is a magnetic surface such that $\mathbf{B} \cdot \hat{\mathbf{n}}|_S = 0$, where $\hat{\mathbf{n}}$ is the unit normal vector to S . Helicity conservation is a common feature of Taylor relaxation,^{16,25} where the global field-line linking is conserved while the total energy is minimized. Under this constraint, the minimum energy state is a force-free field, where $\mu_0 \mathbf{J} = \alpha \mathbf{B}$, with α being a constant. However, in order to reach this state, field-line breaking via reconnection must be allowed in the plasma volume.

III. EXPERIMENTAL SETUP

Flux ropes have previously been created inside magnetic reconnection experiment (MRX) in order to study their solar counterparts.^{15,17,18,21,26} The experimental setup is shown in Fig. 3 and is described in further detail by Myers *et al.*¹⁷ The vacuum fields are controlled by four sets of coils, two for each the guide and strapping fields. By controlling the magnitude and direction of the current in these coils, the strength and decay index of these two fields can be controlled independently. The currents evolve slowly compared to a rope's lifetime, $\tau_{MFR} \sim 1$ ms. The ropes are created by a discharge between two copper electrodes with radius $a_0 = 7$ cm with a foot-point half-separation of $x_f = 17$ cm. The electrodes form the foot points of a rope and can be considered to be perfectly conducting on the timescale of a rope's lifetime. Therefore, the ropes are line-tied to their foot points and exist within a static background magnetic field. Before the discharge is initiated, the vessel is filled with neutral hydrogen to a pressure in the range of 30 – 40 mTorr.

An important property of solar MFRs is the large separation between both time and spatial scales. For the storage and release paradigm of CMEs to hold, the characteristic driving time for energy buildup in the corona, τ_D , must be much larger than the resistive dissipation time, $\tau_R \equiv \mu_0 a L / \eta$. In addition, for MHD to be valid, the Alfvén transit time, $\tau_A \equiv L / v_A$, must be much shorter than both of these timescales, i.e., $\tau_R \gg \tau_D \gg \tau_A$. In our experiments, these times are $\tau_R \sim 1$ ms, $\tau_D \sim 150 \mu\text{s}$, and $\tau_A \sim 3\text{--}10 \mu\text{s}$, and therefore, the inequality holds.¹⁸

The primary diagnostic in the flux rope experiments is an array of B-dot probes with over 300 pickup coils arranged in a 2D array (usually placed in the y - z plane) with two lines of out-of-plane probe triplets along the centerline. The out-of-plane probes are placed parallel to the z -axis at $y = 0$ and $x = \pm 3$ cm. The out-of-plane probes give better insight into the instantaneous curvature than was previously possible. The curvature measurements yield an estimate for the out-of-plane derivatives of \mathbf{B} , which are necessary to calculate the in-plane components of \mathbf{J} .

A. Rogowski coils for measuring the foot-point current distribution

Rogowski coils were made via a printed circuit board (PCB) (see Fig. 4) and were placed below the electrodes located at the foot

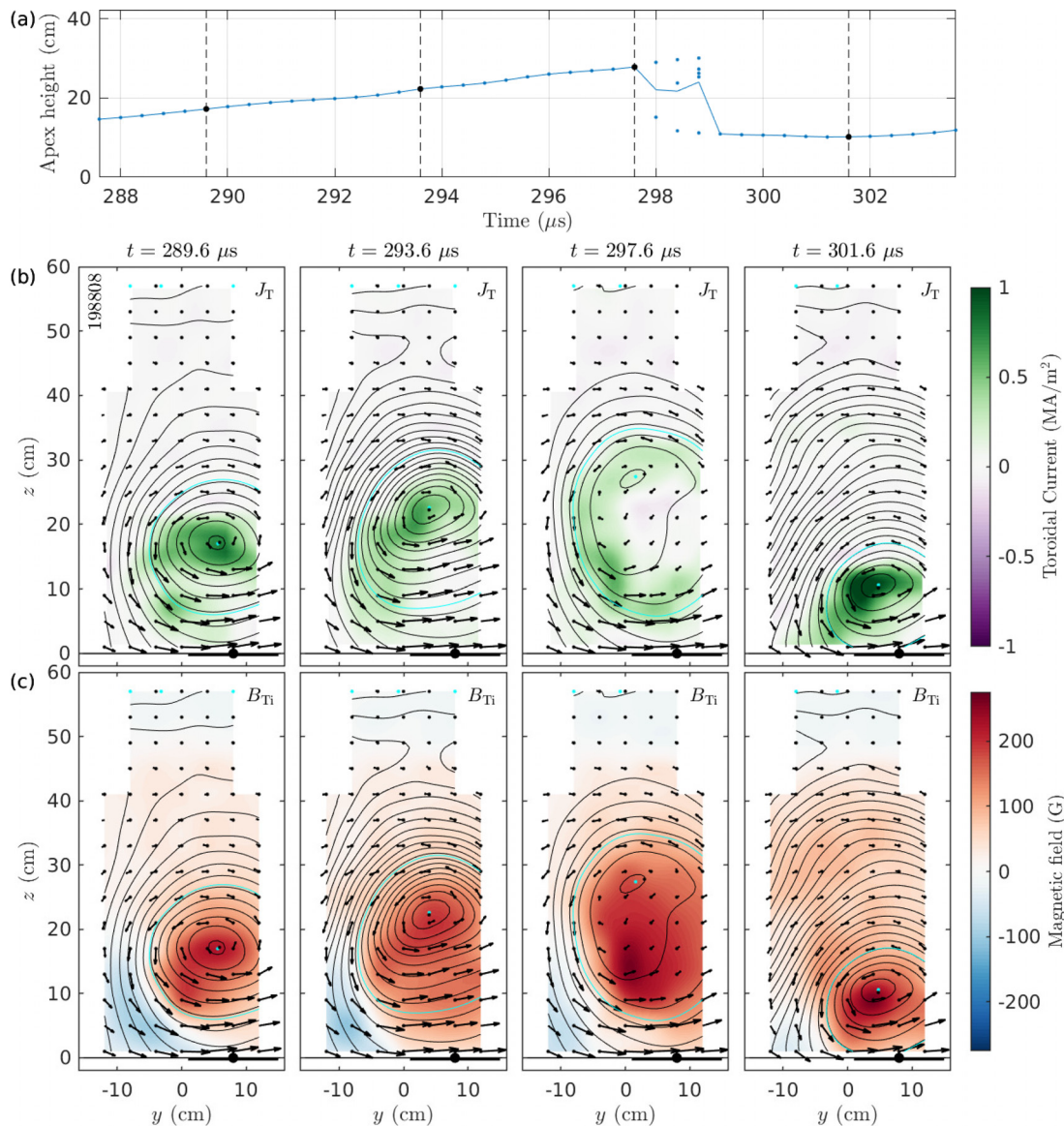


FIG. 2. Example data taken during a failed torus event. (a) The apex height during the failed torus event. The points represent heights of the nulls of the poloidal magnetic field at each time. (b) and (c) 2D plots of the toroidal current density (top) and toroidal magnetic field (bottom) at the times indicated in (a). The in-plane magnetic field at the probe locations is also shown via arrows.

points of the MFRs.²⁷ There were three sets of coils printed into each board and arranged to measure the current passing through the three segments of the electrodes. Each electrode segment consists of a concentric circle or annulus of copper and four posts connecting each to a shared baseplate, which is connected directly to the capacitor bank driving the flux ropes. The PCBs were then placed between the copper segments of the electrode and the baseplate. Each set of Rogowski coils consists of two counter-wound coils, which is used to eliminate electrostatic noise. Additionally, flux loop pairs were printed into each PCB to measure the toroidal magnetic flux at each coil location.

The coils were calibrated by placing them around a wire that was connected to the driving capacitor bank to create currents similar in magnitude and timescale to the experimental currents. The calibration current was externally measured with a commercially available Rogowski coil. Previous measurements of failed torus ropes were focused on the apex of the rope and could not measure any potential hollowing of the current at the foot points. The addition of segmented electrodes and Rogowski coils at the foot points allows for the measurement of the current distribution at the foot points to determine whether hollowing is occurring throughout the rope or if it is localized to the apex.

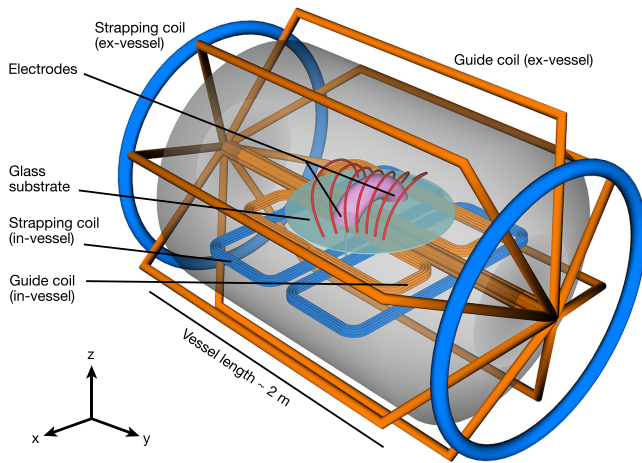


FIG. 3. MRX vessel used to create arched, line-tied flux ropes. An arc discharge is created between two copper electrodes and is separated from the magnetic field coils by a glass substrate. The model in Fig. 1 corresponds to the pink plasma arc in the center of the image. Four coils were inserted into MRX in order to control the profiles of both the guide and strapping fields. The orange coils contribute to the guide field along the rope, while the blue coils control the strapping field across it. Control of the vacuum fields allows for control of the instability parameters for the torus and kink instabilities. Reproduced from Myers *et al.*, Nature **528**, 526 (2015). Copyright 2015 Nature Publishing Group.

B. Langmuir probes in the flux rope experiments

Triple Langmuir probes have been used extensively in previous MRX operation to measure the plasma density, temperature, and potential.²⁸ However, in previous experience with the flux rope setup, it has been seen that the probe tips quickly became dirty and it was not feasible to remove and clean them often enough to maintain data quality. To combat this, a new type of probe tip was created. These new probe tips consist of a loop of 0.005” diameter tungsten wire that is held in place by a double-bore alumina tube. Each end of the loop is connected to a twisted pair that runs out of the vacuum vessel to the probe circuit. During measurement, each twisted pair is shorted together, allowing each loop to be biased as a uniform probe tip. Periodically, a current of about 2A was passed through each loop until it began to faintly glow from black-body radiation. This heating removed surface impurities via outgassing, improving performance.

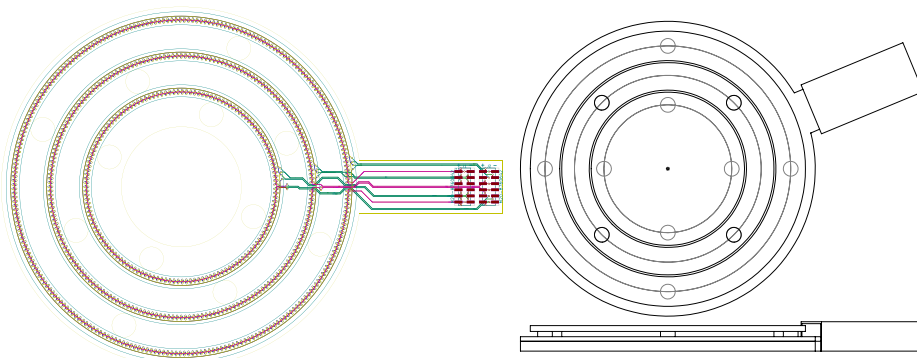


FIG. 4. Diagram of the Rogowski coils used to measure the distribution of plasma current at the foot points. Left: the circuit that was printed into a PCB to create the three concentric Rogowski coils. Right: top and side view of the positioning of the Rogowski coils below the segmented copper electrodes. The “panhandle” contains the electrical connections used to measure the signals, which were insulated from the plasma. A small hole was made in the center of the electrode to allow for gas puffing at the foot points.

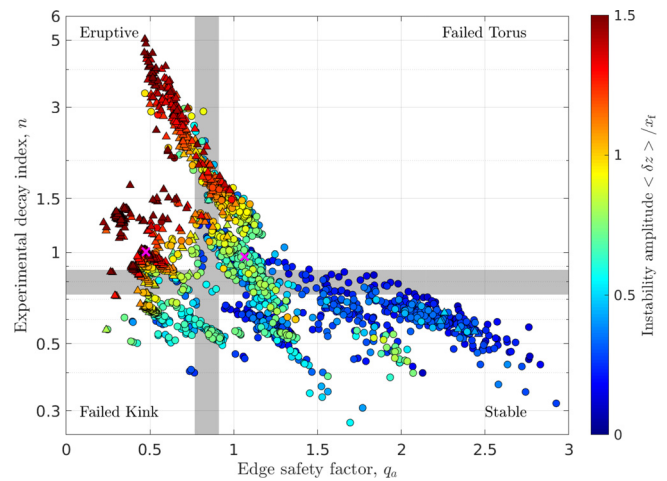


FIG. 5. Experimental parameter space of nearly 2500 shots. Each point represents a shot and is placed based on its value of the two ideal instability parameters, q_a and n . The color represents the instability amplitude based on the magnitude of repeated deviations of z_{ap} , normalized by x_f . Shots that experienced multiple eruptions are represented with triangles, while non-eruptive shots are circles. The magenta crosses represent specific parameters that will be considered in Sec. IV. Four different regions of stability can be seen, although their boundaries are not perfectly defined by the parameters.

The area of each probe tip was measured by cross-calibrating with a reference Langmuir probe in the regular MRX configuration with a quiet, toroidally symmetric plasma.^{18,28}

C. Experimental parameter space

In Fig. 5, each shot taken during three separate experimental campaigns is plotted based on its value of the stability parameters for the torus and kink instabilities, n and q_a as described in Secs. II B and II C. The results of nearly 2500 discharges are represented in the plot. The color of each point represents the instability amplitude, $\langle \delta z \rangle / x_f$, which is based on the time-averaged size of an envelope around the apex height changes normalized by the foot-point half-separation, x_f . (The instability amplitude is described in further detail by Myers *et al.*¹⁷) Shots that erupted multiple times are shown by triangles while non-eruptive shots are circles.

1. The quadrants of the experimental parameter space

The four quadrants in Fig. 5 can be described by qualitatively different stability properties, as labeled. The boundaries of these quadrants are denoted by the gray bars centered on $q_a = 0.8$ and $n = 0.8$. Ropes in the “stable” quadrant are stable to both the kink and torus instabilities and do not erupt. Ropes in the “failed kink” quadrant have a lower q_a and are unstable to the kink instability. However, since the kink instability saturates at a relatively low amplitude, these ropes kink and rotate without erupting. In the “eruptive” quadrant, ropes have high n and low q_a and, therefore, are unstable to both the torus and kink instabilities. These ropes are able to erupt. The last regime is the failed torus quadrant, which contains ropes that are torus-unstable but kink-stable. Despite being torus-unstable, these ropes often fail to erupt (see Sec. IID for more detail).

The apex height (defined as nulls of the poloidal magnetic field) of an example eruptive rope is presented in Fig. 6. Here, it can be seen that z_{ap} is multivalued at certain times. This occurs due to experimental constraints caused by the large external inductance in the circuit driving the plasma current. This external inductance causes the total toroidal current to remain constant on the timescale of an eruption. Therefore, instead of the erupting rope dissipating as it rises, a new rope is formed at a lower height. This rope exists in the same vacuum fields and is, therefore, also unstable. The new rope then erupts, creating a repeating pattern of eruptions. At times when two ropes coexist, z_{ap} is presented as multivalued and usually consists of three values, two O-points corresponding to the two ropes’ apexes, and an X-point between them.

IV. EVOLUTION OF THE ENERGY INVENTORY DURING EVENTS

In this section, we are primarily focused on the energy inventory before and after a failed torus event. Since our experimental plasma is low β , the majority of the stored energy is in the magnetic fields; however, the thermal and kinetic energies are significant enough to be considered. The thermal properties were not able to be measured on previous flux rope experiments conducted on MRX due to difficulties of implementing Langmuir probes in the flux rope environment. The triple Langmuir probe design described in Sec. IIIB allowed for a direct measurement of the electron thermal properties.

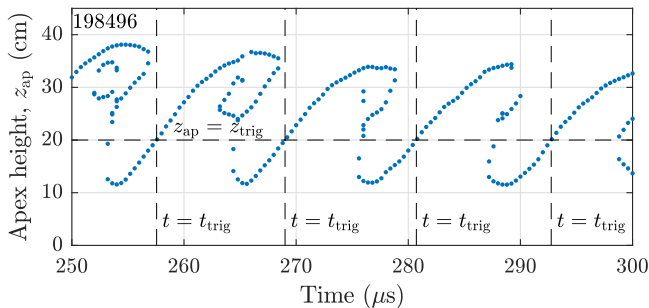


FIG. 6. Data overlaying procedure for an example eruptive rope. The apex height, z_{ap} , at each time is shown by the blue points. Whenever the rope crosses a set trigger height, $z_{trig} = 20$ cm (horizontal dashed line), the crossing time, t_{trig} (vertical dashed lines), is noted. The data in a fixed window around each t_{trig} are then averaged together to build the behavior of an “average event.”

A. Event identification and timing

In this section, we will be focused on what happens during an event, which will be defined as either an eruption or a failed torus event. In order to investigate the behavior of an “average event,” we look first at the data gathered from many shots with the same experimental conditions. However, due to the nature of the instabilities, even under the same experimental conditions, events can occur at very different times in the shot. While the events may occur at very different times, they are often very similar if correctly shifted in time. The procedure for averaging event data is shown with the values of z_{ap} presented in Fig. 6. First, a fixed height, $z_{trig} = 20$ cm, is picked.²⁹ Then, each time, t_{trig} , where the rope passes through this height is found, i.e., $z_{ap}(t = t_{trig}) = z_{trig}$. After each t_{trig} is found, the value of $z_{ap}(t + \Delta t)$ is recorded for time shifts, $\Delta t \in [-20$ ms, 20 ms]. These data are then averaged for each Δt across events and shots to create an average event. The averaging procedure can be repeated for any other experimentally measured quantity, such as the results of the Langmuir probes.

The averaged apex height for a selected failed torus condition and an eruptive condition is shown in the bottom row of Fig. 7. The times where there is no apex for the eruptive condition correspond to times where many of the events have multiple apexes and a good average cannot be created. The repetitive nature of the eruptive events can be seen in the events both preceding and following the event occurring

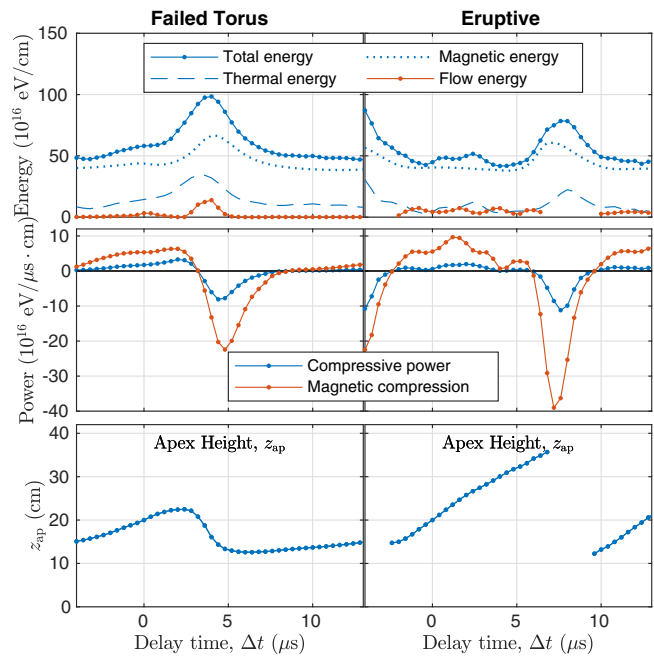


FIG. 7. Energy inventory during an average failed torus (left) and eruptive (right) event. Top: the internal pressure energy is shown with a blue dashed line, the magnetic energy is a blue dotted line, and the sum of these is a solid blue line. The flow energy of the moving apex is shown in red. Middle: compressive power done by the rope, defined by Eq. (A7). The two terms of this equation are plotted separately. The compression due to the thermal pressure is shown in blue in the top row and the compression of the magnetic field is shown in red. Bottom: the average apex height.

at $\Delta t = 0$. These events survive the averaging due to the coherent nature of the eruptive events across shots. In contrast to this, only one event can be seen in the failed torus condition. This is because the events are not as coherent and the delay between subsequent events varies significantly between shots, even with the same experimental conditions. However, if we limit our analysis to around $-5 \mu\text{s} < \Delta t < 5 \mu\text{s}$, the events remain more coherent and averaging can be used to build an average event.

B. Measurements of an average event

We first want to investigate how the total energy stored within a flux rope changes during an event. The stored energy density is given by³⁰

$$w = \frac{P_e}{\gamma - 1} + \frac{B^2}{2\mu_0}, \quad (5)$$

where P_e is the electron pressure and γ is the adiabatic index, and we will use $\gamma = 5/3$. Therefore, the total energy per unit length in a wedge area around the apex is given by

$$W = \int h_T \left[\frac{P_e}{\gamma - 1} + \frac{B^2}{2\mu_0} \right] dA, \quad (6)$$

where the integral is carried out in the poloidal plane over the flux surface that contains 50% of the current and h_T is the scale factor defining the width of the wedge volume around the apex (highlighted in Fig. 1) as described by Alt.¹⁸ The flow energy of a moving flux rope can be defined as the kinetic energy of the ions moving with the flow velocity,

$$K = \int h_T \left[\frac{1}{2} m_i n v_{\text{ap}}^2 \right] dA, \quad (7)$$

where m_i is the ion mass, n is the particle density, and v_{ap} is the apex velocity.

The average value of W and the two terms separately are presented in the top row of Fig. 7 along with the flow energy for both a failed torus and eruptive condition. The pressure and density in the rope are measured via the triple Langmuir probe as described in Sec. III B, and the magnetic energy is measured with the B-dot probe array. In the failed torus case, we see a large change in the total energy stored in the rope during the collapse, while there is a more moderate change in the eruptive case. At times where the eruptive ropes split and there is no well-defined apex height, the flow energy cannot be defined.

The scale factor (and therefore wedge width) used in Fig. 7 is normalized by setting $h_T(z_{\text{ap}}) = 1$ so that the integral is scaled by a unit length. In addition to this scaling, the changing width with height is compensated by setting the nominal wedge width to be a fixed fraction of the total rope length using the shifted circle model described by Alt *et al.*²¹ This fixed fraction compensates for changes in energy per unit length that would be caused by the changing of the total rope length.

In addition to the stored energy within a rope, we also want to investigate the work done on a rope as events occur. When a failed torus rope collapses, it moves into a region of larger external magnetic field, which causes the ropes to decrease in cross-sectional area. The change in volume of the wedge around the apex causes work to be done on the rope via Eq. (A7) as shown in the Appendix. One of the assumptions made in the Appendix is that the integration volume

follows the plasma velocity. Since we are interested in a volume centered on the apex, this assumption is equivalent to neglecting axial flow. We are interested in Alfvénic timescales; therefore, the flow is negligible as long as $v_{\text{flow}} \ll v_A$, which is expected in our experiments based on the frequency of the kink instability.^{31,32}

The compressive power done by a rope is then given by

$$P_{\text{comp}} = \left(P_e + \frac{B^2}{2\mu_0} \right) \frac{dV}{dt}, \quad (8)$$

where dV/dt is the rate of change in the wedge volume around the apex defined by h_T , described by Alt.¹⁸ The measured compressive power is shown in the middle row of Fig. 7. As a failed torus rope rises, it does a small amount of work in order to expand in cross-sectional area. However, when the rope quickly collapses during a failed torus event, a large amount of work is done on the rope. The same values of B are used in the calculation of the magnetic terms of both W and P_{comp} .

Similar compressive power calculations can be done for average eruptive ropes. However, the decrease in apex size of an eruptive rope before an event is due to the creation of a new, lower rope (as discussed in Sec. III C 1) and not due to an actual decrease in size. Therefore, the change in apex size cannot be considered a true compression and the values plotted in Fig. 7 for these times are not accurate.

C. Energy inventory during a failed torus event

The energy inventory during an average failed torus event can be found via the plots in Fig. 7. By comparing the peak energy in a rope during an event to the value before, we can determine the change in energy during an event. This is shown in Table II. In addition to the change in energy within a rope, we can look at the compressive work done on a rope. When a failed torus rope collapses, it moves into a

TABLE II. Energy inventory during an averaged failed torus event. The work done on the rope by the changing volume and the energy within a wedge around the apex are considered. The work is integrated over the same time window; the difference in energies is taken, $3.2 \mu\text{s} \leq \Delta t \leq 8.0 \mu\text{s}$. The work done and energy change balance within 6%, implying that ideal MHD is sufficient to describe the energy change during a failed torus event.

Work or energy change	Source term	Energy (10^{16}eV/cm)
Pressure compressive	$\int P_e \frac{dV}{dt} dt$	-8.1
Magnetic compressive	$\int \frac{B^2}{2\mu_0} \frac{dV}{dt} dt$	-57
Thermal energy change	$\int \frac{P_e}{\gamma - 1} dV$	12
Magnetic energy change	$\int \frac{B^2}{2\mu_0} dV$	36
Flow energy change	$\int \frac{1}{2} \rho v^2 dV$	13
Total work		-65
Total energy change		62

region of larger external magnetic field, which causes the ropes to decrease in cross-sectional area. The change in volume of the wedge around the apex (see Alt¹⁸ for a description of the wedge volume) causes work to be done on the rope via Eq. (A7). The total work done on a rope during this compression can be found by integrating the curve shown in Fig. 7 over the time period of an event.

The total work done on a rope can then be compared to the total change in energy to validate the ideal MHD model as a description of the energy inventory. When these two values are compared, it is seen that they agree to within 6%. This is evidence that failed tori can be explained within the framework of ideal MHD without the need for non-ideal effects, such as reconnection. Previous work has seen that around 7%–8% of the magnetic energy is dissipated during Taylor relaxation.³³ However, this value compares the energy dissipated to the total magnetic energy, while our 6% agreement is relative to the measured energy change. This means that as long as the error in our thermal energy measurements is $\leq 50\%$, our agreement still falls well below the expected energy dissipation.

In Fig. 7, it can be seen that the total energy along with its components, magnetic and internal, drop by a factor of almost 2. This is a much larger change than would be expected in a device with fixed walls such as in Ji *et al.*³³ This energy change is understood via the large change in the geometry of the system when a rope undergoes a failed torus event. During an event, the volume of a rope changes dramatically, causing a large change in energy. However, it is notable that even a large energy change of $\sim 50\%$ can be explained through purely ideal MHD without resorting to non-ideal effects, such a reconnection.

In this section, we have neglected the changes in the ion pressure, P_i . Due to the difficulty of measuring the ion temperature, we do not have any direct measurements of P_i in our experiments. The characteristic timescale for energy transfer between electrons and ions is $\tau_{E,ei} \sim 3 \mu\text{s}$, while the dynamic time of an event is $\tau_{\text{event}} \sim 2 \mu\text{s}$. Since these two values are comparable, the electrons should be able to transfer some energy to the ions during an event, but do not transfer energy fast enough to bring them into equilibrium at all times. Therefore, the actual situation is somewhere between $P_i = \text{Const.}$ and $P_i = P_e$. The latter assumption would double the values of both the pressure compressive work and internal energy presented in Table II. This decreases the total work by $8 \times 10^{16} \text{ eV/cm}$ while increasing the total energy change by $12 \times 10^{16} \text{ eV/cm}$, bringing the two values closer to agreement. Therefore, the assumption of $P_i = \text{Const.}$ does not weaken the main conclusion of this chapter that ideal MHD is sufficient to explain the failed torus events.

V. FOOT-POINT CURRENT MEASUREMENTS

In this section, we will investigate the changing current distribution at the foot points of the ropes measured via the Rogowski coils described in Sec. III A. The total current varies slowly over the lifetime of a rope ($\tau_D \sim 150 \mu\text{s}$), which is also measured by the outermost Rogowski coil. Therefore, fast changes in the current measured by the other coils represent current redistribution rather than actual change in the current. From these measurements, we can observe how the current profile changes at the foot points of ropes during events. The change in current distribution at the foot points during failed torus events can be a further indication of hollowing current throughout the rope, strengthening the conclusions previously made based on measurements at the apex.

As a note on notation, we will define the current measured by one of the Rogowski coils with a symbol such as I_{A1} . The subscript will start with either an “A” or a “C” to refer to coils on the anode or cathode side, respectively. The number can be any of $\{0, 1, 2\}$ and refers to specific coils printed into each PCB. For example, I_{A0} refers to the current measured by the outermost coil on the anode side (which should be the same as the total plasma current), and I_{C2} refers to the innermost coil on the cathode side. We will also use I_{Xx} to refer to an arbitrary coil.

A. Oscillating foot-point current envelope definition

In order to investigate the change in current at the foot points of the rope, we define an envelope around the oscillating currents. This is similar to the procedure used to define the instability amplitude of the apex height, $\langle \delta z \rangle / x_f$. An example of these envelopes based on I_{X1} for two example ropes can be seen in Fig. 8. Here, the current in the middle Rogowski coils at both the anode and cathode is plotted for an example failed torus and eruptive rope. The total current passing through the electrodes is also plotted in black for reference. A normalized oscillation amplitude, $\langle \delta I_{Xx} \rangle / I_{p,\text{max}}$ is defined to measure the change in current normalized to the peak plasma current. Here, $\langle I_{Xx} \rangle$ is envelope width time-averaged over a period where the plasma current is within 80% of its maximum value and $I_{p,\text{max}}$ is the peak plasma current.

The values of $\langle \delta I_{A1} \rangle / I_{p,\text{max}}$ and $\langle \delta I_{C1} \rangle / I_{p,\text{max}}$ for each shot are shown in color in Fig. 9. As in Fig. 5, each shot is plotted based on its value of the stability parameters for the kink and torus instabilities, q_a and n as described in Secs. II B and II C, respectively. The results of almost 2000 shots are shown. The electrons in the anode sheath are less mobile than those near the cathode, which causes more resistivity and, thus, weaker line-tying at the anode.³¹ The stronger line-tying effects at the cathode cause the cathode envelopes to be smaller than the anode envelopes. To allow for easier visual inspection, the range represented by the color bar in Fig. 9(b) is slightly smaller than in Fig. 9(a).

The largest values of $\langle \delta I_{A1} \rangle / I_{p,\text{max}}$ are in the failed torus regime. Even though the eruptive ropes rise and erupt much more dramatically,

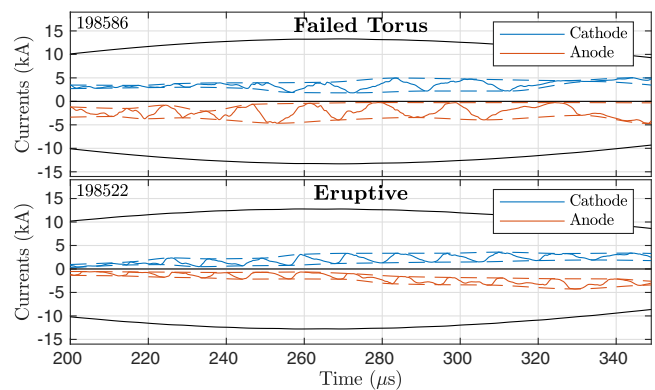


FIG. 8. Currents measured by the middle Rogowski coils, I_{A1} and I_{C1} , are plotted in color compared to the total plasma current in black for both an example failed torus (top) and eruptive rope (bottom). For comparison with negative currents, $-I_p$ is also shown. The envelopes around the oscillating current are shown with dashed lines. The time-averaged width of this envelope is used to determine how much the current distribution changes at each foot point.

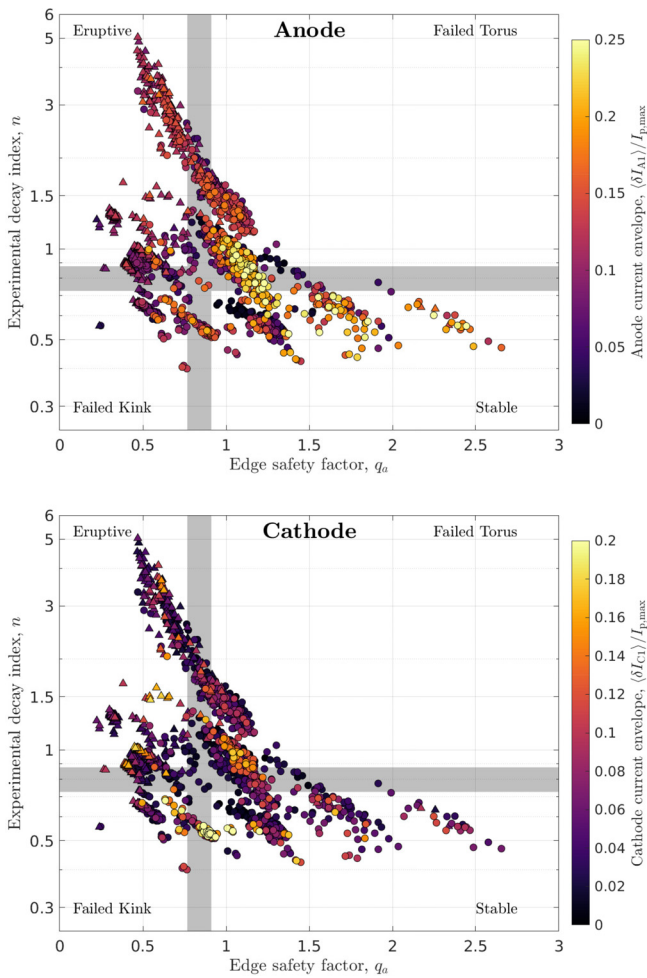


FIG. 9. Normalized foot-point current envelope of the middle Rogowski coils, $\langle \delta I_{C1} \rangle / I_{p,max}$, (in color) for both the anode (top) and the cathode (bottom). As in Fig. 5, each point is placed based on its value of the two ideal instability parameters, q_a and n , and shots that erupted are represented by triangles while non-eruptive shots are circles. The envelope sizes for the anode are significantly larger than those of the cathode due to the stronger line-tying there. The shots with the largest changes are in the failed torus regime rather than the most violently eruptive shots.

the redistribution of current at the anode is not as significant. This is an indication that the current hollowing discussed in Sec. II D occurs throughout the rope in failed torus events, but is not significant in purely eruptive events. The reason why there is not significant current hollowing in eruptive events is discussed in Sec. VII A. Similarly, we see that $\langle \delta I_{C1} \rangle / I_{p,max}$ is also larger in the failed torus regime than in the eruptive regime. However, the largest values of $\langle \delta I_{C1} \rangle / I_{p,max}$ occur in kinked ropes. It is currently unclear why these ropes, in particular, had larger changes at the cathode than the anode. However, since the focus of this work is not on the pure kink instability, we will focus on the top two quadrants. We now have evidence for current hollowing occurring during failed torus events at the apex and at both electrodes simultaneously.

B. Comparison between the anode and cathode foot-point current envelopes

In Fig. 10(a), we have again plotted each of the shots shown in Fig. 9, but now each shot is plotted based on its value of $\langle \delta I_{C1} \rangle / I_{p,max}$ on the x axis and $\langle \delta I_{A1} \rangle / I_{p,max}$ on the y axis, along with the instability amplitude, $\langle \delta z \rangle / x_f$, in color. This allows us to directly compare the changing current at the anode and cathode for each shot. From this plot, it is immediately obvious that $\langle \delta I_{A1} \rangle / I_{p,max} > \langle \delta I_{C1} \rangle / I_{p,max}$ for most shots, which is easily explained by the stronger line tying at the cathode. We also see that the most eruptive shots do not have the largest value of $\langle \delta I_{A1} \rangle / I_{p,max}$. Despite having the largest change in apex height, they do not have the most current redistribution at the foot points. The reason why eruptive ropes have less current redistribution than failed torus ropes is discussed in Sec. VII A.

In order to investigate this, it is helpful to separate the shots in Fig. 10(a) based on stability quadrant. In Figs. 10(b) and 10(c), we recreate the same plot but with shots only in the failed torus regime [Fig. 10(b)] or in the eruptive regime [Fig. 10(c)]. Here, we see that the failed torus ropes have larger values of $\langle \delta I_{A1} \rangle / I_{p,max}$ than the eruptive ropes. This indicates that there is more current redistribution occurring during failed torus events, which is indicative of the current hollowing that is occurring in these events. We also see that the ropes with $\langle \delta I_{A1} \rangle / I_{p,max} < \langle \delta I_{C1} \rangle / I_{p,max}$ are much more likely to be eruptive than failed torus. This could be due to the fact that new ropes are created during eruptive events, and the profile change is new rope formation rather than current hollowing.

C. Foot-point current redistribution during an event

We will now investigate the specific behavior of the measured foot-point current on the Rogowski coils during an average event. An average failed torus or eruptive event is created the same way as it was done in Sec. IV A. The results of this for the middle coils are shown in Fig. 11. The results of the smallest center coils are qualitatively similar to the middle coils and can be seen in Alt.¹⁸ This means that the redistribution of the current is not localized to a particular radius but occurs throughout the foot point. Since the middle Rogowski coil measures the current in both the center electrode segment and the middle ring, changes in I_{X2} also cause changes in I_{X1} . However, since the changes seen in I_{X1} are about twice the size of the changes seen in I_{X2} , we can still conclude that the current redistribution is occurring throughout the minor radius.

The change in currents during an average eruptive event in Fig. 11 looks remarkably similar between the electrodes. However, since the nominal current to each electrode has a different sign, we should actually be focused on absolute value changes instead. In absolute value, I_{A1} and I_{C1} actually have opposite behavior. Leading up to an event, $|I_{A1}|$ increases (implying that the current is becoming more peaked at the anode), while $|I_{C1}|$ decreases (implying that the current is becoming less peaked at the cathode). The trend then reverses, while a new rope is formed and the cycle begins again. This means that there is not a consistent current redistribution during these events, and the field lines that are gaining current intersect the cathode and anode at different minor radii.

The foot-point current change during an eruptive event can be contrasted with that of a failed torus event. During the rise, both $|I_{A1}|$ and $|I_{C1}|$ decrease. This means that there is less current going to the center two electrode segments,³⁴ implying that the current is becoming

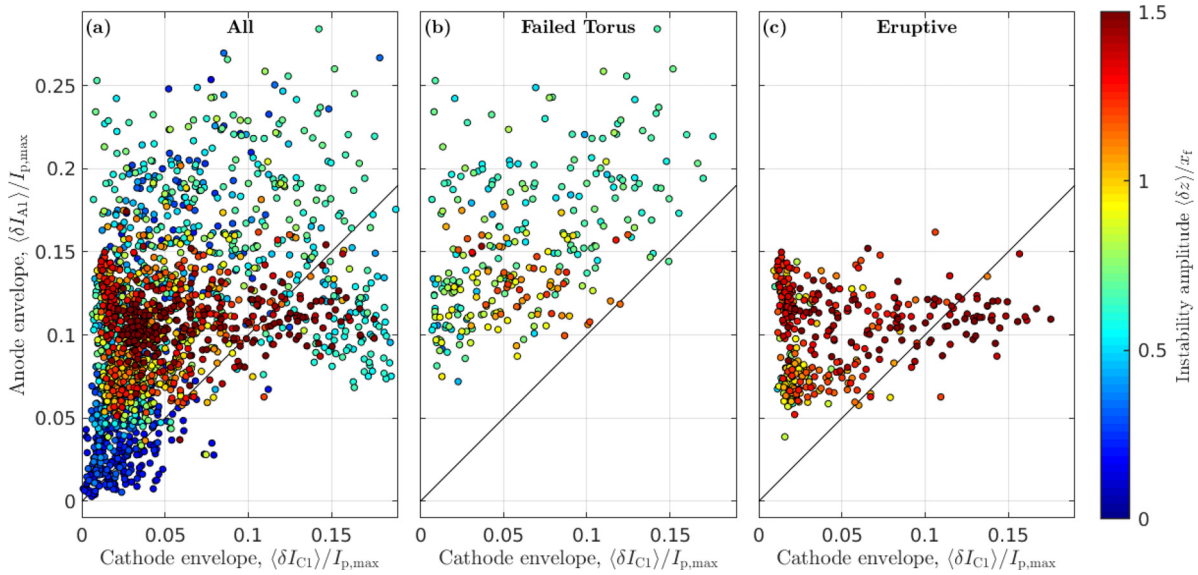


FIG. 10. A comparison of the normalized foot-point current envelopes at the anode vs the cathode for: (a) each shot, (b) failed torus ropes, and (c) eruptive ropes. The points in (b) and (c) are a subset of the points in (a). The line $y=x$ has been added to aid the comparison of the two quantities. The instability amplitude is also shown in color using the same scale as in Fig. 5. Here, we see that for the majority of ropes, $\langle \delta I_{A1} \rangle / I_{p,max} > \langle \delta I_{C1} \rangle / I_{p,max}$. The failed torus ropes have a generally larger $\langle \delta I_{A1} \rangle / I_{p,max}$, while the spread on $\langle \delta I_{C1} \rangle / I_{p,max}$ is similar.

less peaked at both electrodes. Since the failed torus events are less coherent than the eruptive events (see Sec. IV A), the return to the initial state is not as dramatic, but the current can still be seen returning to a more peaked state. This is the first evidence that the hollowing current previously seen in failed torus events occurs throughout the rope and is not localized to the apex where previous measurements were focused.¹⁵ With this new evidence, we will develop a theory of how the current hollowing and subsequent toroidal flux enhancement can occur without violating the ideal MHD assumptions except in a small region around the electrodes.

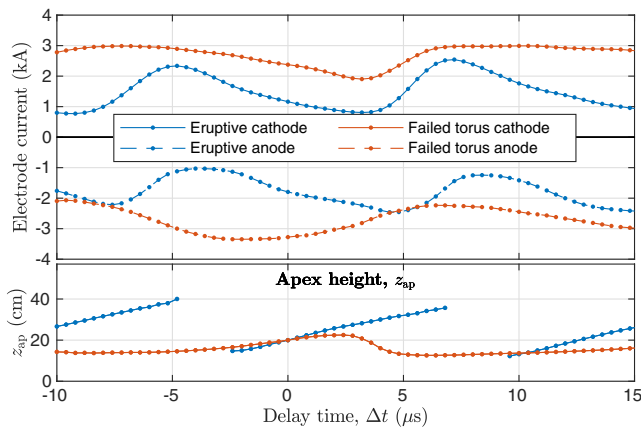


FIG. 11. Top: the current measured by the middle Rogowski coils, I_{X1} , on both the cathode (solid lines) and the anode (dashed lines) for both eruptive events (blue) and failed torus events (red). Bottom: the average apex height for each condition for comparison with the measured current. A larger current (in absolute value) represents a more peaked current distribution at the electrode.

VI. TOROIDAL FLUX CHANGE DURING FAILED TORUS EVENTS

In addition to the measurements of the foot-point current distribution made possible by the PCBs, we can measure the toroidal flux through flux loops also printed into the boards. An example of such a measurement is shown in Fig. 12, where the measured flux is normalized by the flux loop area to yield an average magnetic field, $\langle \delta B \rangle$. The majority of the toroidal flux in a rope is created by the external coils

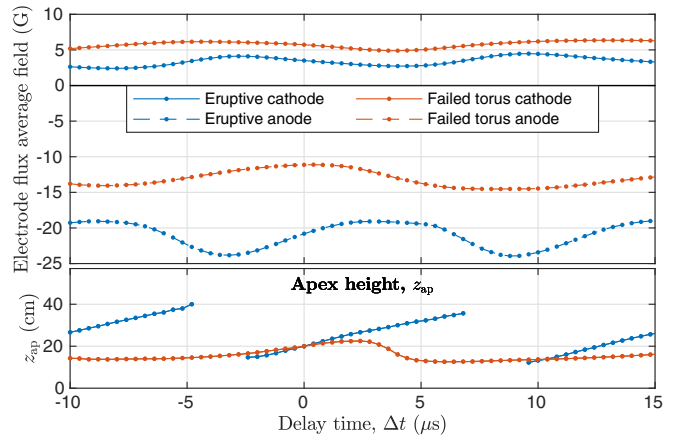


FIG. 12. Top: the average toroidal magnetic field measured by the outer flux loop on both the cathode (solid lines) and the anode (dashed lines) for both eruptive events (blue) and failed torus events (red). Bottom: the average apex height for each condition for comparison with the measured flux. The majority of the toroidal flux in a rope is created on timescales that are too long to be measured by the flux loops. Therefore, the measurements here only show dynamic changes rather than absolute values.

on timescales that are too long to be measured by the flux loops. Therefore, the measurements here only show dynamic changes rather than absolute values. In these plots, we see that in both conditions, $\langle \delta B \rangle$ changes more on the anode than the cathode, consistent with the stronger line-tying there. The measured changes also lie within a relatively narrow range of $\langle \delta B \rangle \sim 2 - 5$ G. Since the flux loops lie below the electrodes, which can be considered to be perfectly conducting on eruption time scales, the measured fluxes do not directly correspond to the toroidal flux in the ropes. In the rest of this section, we will devise a model to describe how these measurements would correspond to the changes in the ropes near the foot points.

A. Toroidal flux change in a rising MFR

The toroidal flux in a rope has been seen to increase during failed torus events as shown in Fig. 13. The cartoon in Fig. 14 illustrates a series of events wherein this can happen. In Fig. 14(a), we have the initial state of our rope. The background guide field is B_{g0} , and we will discuss the toroidal flux in three locations: at the apex, Φ_a , at the sheath edge Φ_s , and at the electrode surface, Φ_f . The surface for Φ_s is the edge of a non-ideal layer at the base of the rope where non-ideal MHD effects cannot be ignored, such as a Debye sheath. Other potential non-ideal layers are discussed in Sec. VID. Since the rope is line-tied at the electrode, Φ_f is a constant. The three fluxes can also be broken up based on contributing fields. We will separately consider the internal flux created by currents in the rope, the vacuum flux created by the external magnetic field coils, and the eddy flux created by eddy currents in the copper electrode that exist to maintain the line-tied condition. These sources will be denoted with the subscripts “i,” “v,” and “e,” respectively. The fluxes can then be written as

$$\Phi_a = \Phi_{a,i} + \Phi_{a,v}, \tag{9a}$$

$$\Phi_s = \Phi_{s,i} + \Phi_{s,v} + \Phi_{s,e}, \tag{9b}$$

$$\Phi_f = \Phi_{f,i} + \Phi_{f,v} + \Phi_{f,e}, \tag{9c}$$

where the eddy contribution to Φ_a has been ignored since the eddy fields should be localized around the electrode. We can consider the initial values of $\Phi_{s,e}$ and $\Phi_{f,e}$ to be zero by including any initial eddy current fields in the vacuum fluxes.

In Fig. 14(b), the rope has risen to a height with reduced guide field, B_{g1} . This causes $\Phi_{a,v}$ to decrease (indicated by the red text), and

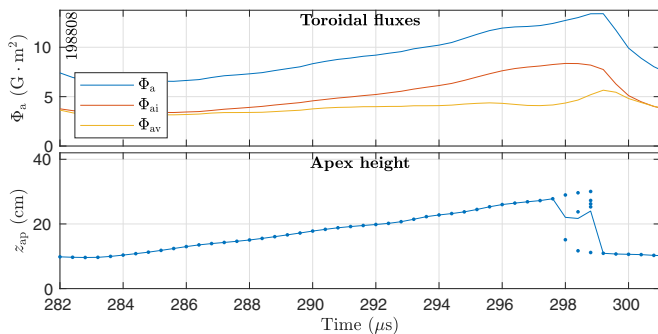


FIG. 13. Top: the measured total, internal, and vacuum toroidal fluxes at the apex of a rope during an example failed torus event. The internal and total flux both increase during the rope’s rise. Bottom: the apex height of the rope for comparison. During the failed torus event, the apex height is briefly multi-valued.

therefore, $\Phi_{a,i}$ must increase (indicated by the green text) to conserve Φ_a . This is accomplished by increasing the poloidal current, J_p , at the apex. Since the plasma is force-free, the current must flow along field lines. Therefore, an increase in J_p at the apex leads to an increase along the entire rope, leading to Fig. 14(c). The increase in J_p leads to an increase in both $\Phi_{s,i}$ and $\Phi_{f,i}$. Since Φ_f must be exactly conserved, this means that $\Phi_{f,e}$ and $\Phi_{s,e}$ must become negative. The fields due to the eddy currents are highly localized to the electrode, therefore $|\Phi_{s,e}| < |\Phi_{f,e}|$. This means that the total flux, Φ_s , will increase as in Fig. 14(d). The flux increase is caused by field line bending, and finite $J \times B$ is allowed in the non-ideal layer.³⁵ The increase in Φ_s also leads to an increase in Φ_a since ideal MHD can be applied to the rest of the rope.

The increase in toroidal flux throughout the rope does not violate the frozen-in condition of ideal MHD because the new flux comes from incorporating new flux surfaces into the rope rather than changing the flux in a fluid element. The new field lines do not terminate on either electrode. However, they are able to carry plasma current because this current is able to cross field lines in the non-ideal layer and, therefore, still reach the electrode.

The increase in $\Phi_{a,i}$ requires an increase in J_p away from the center of the rope. This causes the current profile to be less peaked in the center, the extreme case of which is a hollowing of the current where it is largest at the edges of the rope as seen in Fig. 2. While this current profile is only required of J_p , the profile must also be mirrored in J_T because the rope should be force free; i.e., the current must flow along field lines.

B. Fields in a straight MFR with decreasing guide field

One assumption made in Sec. VIA is that $\Phi_{a,v}$ decreases when the rope enters a region with a lower guide field. However, it is not immediately obvious that this must be the case. One could imagine a rope entering a low B_g region and expanding proportionally to maintain $\Phi_{a,v}$ rather than enhance the toroidal field. In this section, we will argue that this cannot be the case if flux and energy are to be conserved. We will do this using a simplified 1D straight flux rope model.

Consider a straight flux rope with radius, a_0 , constant guide field, B_{g0} , and constant internal toroidal field, B_{T10} , so that its total toroidal field is $B_T[0] = B_{T10} + B_{g0}$. Then, the toroidal flux and magnetic energy are given by

$$\Phi_{T0} = \pi a_0^2 (B_{T10} + B_{g0}), \tag{10a}$$

$$W_0 = \frac{\pi a_0^2}{2\mu_0} (B_{T10} + B_{g0})^2. \tag{10b}$$

Now suppose we reduce the guide field to B_{g1} , where $B_{g1} < B_{g0}$. We will then determine the values for the other resulting rope parameters, a_1 and B_{T11} . Using toroidal flux conservation, $\Phi_0 = \Phi_1$, we have

$$\pi a_0^2 (B_{T10} + B_{g0}) = \pi a_1^2 (B_{T11} + B_{g1}). \tag{11}$$

Due to energy conservation, the change in magnetic energy must be equal to the work done by the rope on the external (guide) fields.³⁶ The compressive work done by the external fields is caused by the magnetic pressure

$$W_{\text{comp,g}} = \int P_{\text{comp,g}} dt = \int B_g^2 \frac{dV}{dt} dt, \tag{12}$$

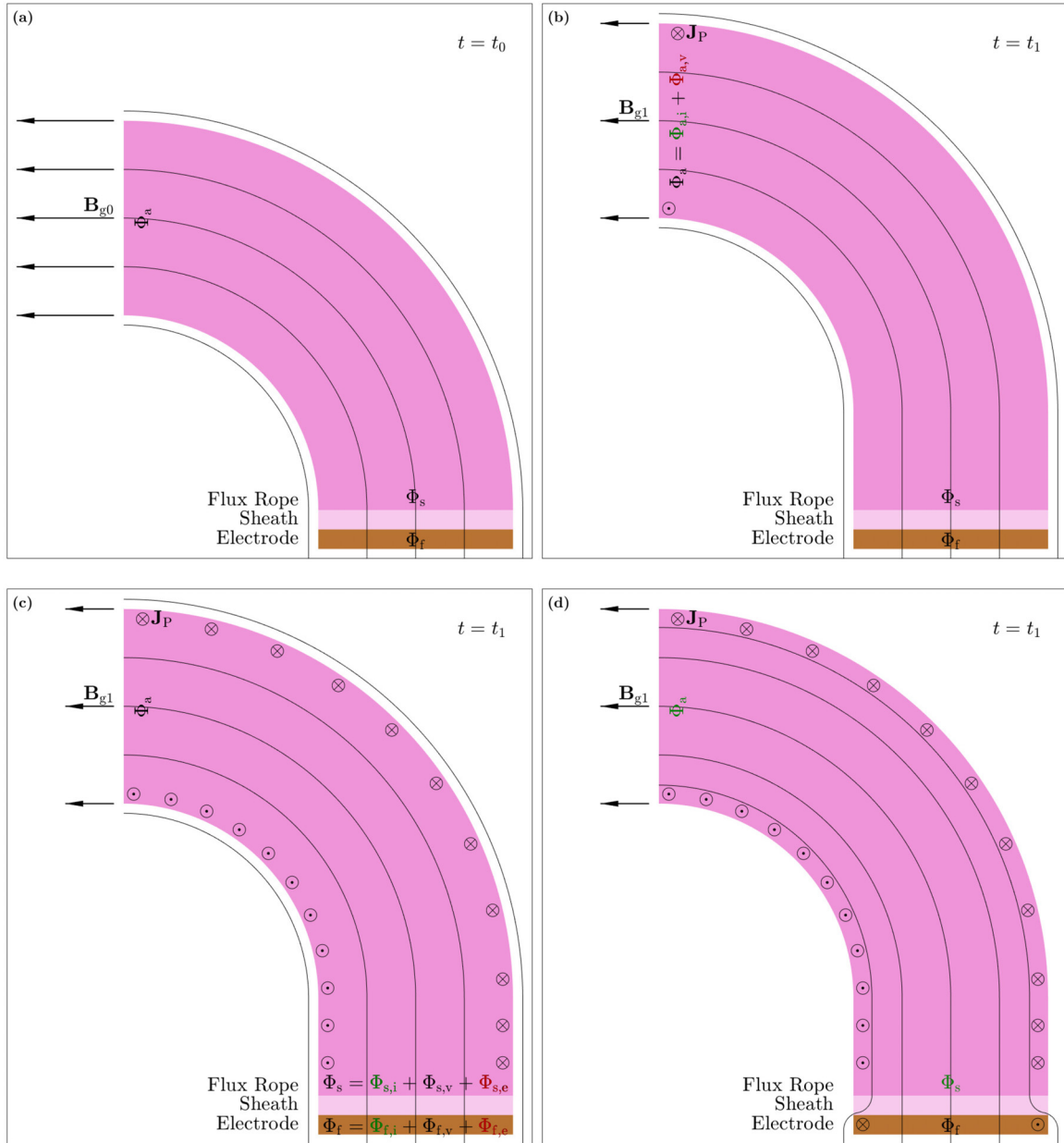


FIG. 14. Cartoon of the changing toroidal fluxes in a rising rope. The fluxes are considered at three locations, the apex, the top of a non-ideal sheath layer, and at the electrode surface. Terms that increase are marked in green, while terms that decrease are marked in red. (a) The initial state of the rope with guide field, B_{g0} . (b) The rope rises into a region with smaller guide field, B_{g1} , and so J_P is enhanced to increase $\Phi_{a,v}$ so that toroidal flux is conserved. (c) Since the current follows field lines, J_P is enhanced throughout the rope, increasing $\Phi_{s,j}$. (d) Eddy currents are generated in the electrode to conserve Φ_f ; this bends field lines into the rope and increases Φ_s and, therefore, Φ_a .

where $V \propto a^2$ is the volume of the rope. This yields³⁷

$$W_1 - W_0 = W_{\text{comp,g}}, \tag{13a}$$

$$a_1^2(B_{T11} + B_{g1})^2 - a_0^2(B_{T10} + B_{g0})^2 = a_1^2 B_{g1}^2 - a_0^2 B_{g0}^2. \tag{13b}$$

These two equations can be solved for a_1 and B_{T11} ,

$$\left(\frac{a_1}{a_0}\right)^2 = \frac{-B_{T10}^2 - 2B_{T10} \pm \sqrt{D}}{2B_{g1}^2}, \tag{14a}$$

$$B_{T11} = \frac{B_{T10}^2 - 2B_{g1}B_{T10} - 2B_{g1} + 2B_{T10} \pm \sqrt{D}}{2(B_{T10} + 1)}, \tag{14b}$$

where the magnetic fields have been normalized to B_{g0} and D is defined as

$$D = B_{T10}^2(B_{T10} + 2)^2 + 4B_{g1}^2(B_{T10} + 1)^2. \quad (15)$$

We are only interested in the positive root of these equations in order to maintain $a_1^2 > 0$. It can be seen that there are only two free parameters in these equations, B_{g1} and B_{T10} .

Contour plots of $a_1/a_0 - 1$ and $(B_{T11} - B_{T10})/B_{g0}$ are presented in Fig. 15. It can be seen in these plots that both of these quantities are non-negative for all values of B_{g1} and B_{T10} . Therefore, the rope expands and the internal toroidal field is enhanced by the decrease in external guide field. While this simplified model without toroidal effects cannot be effectively used to quantitatively describe the changing vacuum flux during the rise of an arched rope, it does indicate that we should expect Φ_{av} to decrease as a rope rises into areas of smaller B_g . Since this simplified model does not include any effects of the field profile (i.e., it assumes constant B_T), it cannot accurately predict the enhancement of the tension force. A comparison to experimental profiles during an event with constant flux similar to this model is presented in Sec. VII.

C. Toroidal flux enhancement by field-line bending around the electrodes

In order to better study the field-line bending occurring in Fig. 14, a simple model of enhanced poloidal current is devised. We will model the current as an infinitesimal current loop with current I_{loop} of radius a located at a height $z = \Delta z$ above the electrode. This height can be taken as the edge of the non-ideal layer where the plasma current is able to cross field lines. In order to maintain the frozen-in condition at the electrode surface, $\Delta B(z = 0) = 0$, a mirror current loop of current $-I_{loop}$ is located at $z = -\Delta z$. The field lines of this configuration are shown in Fig. 16(a). Figure 16 is not to scale. In particular, the ratio $\Delta z/a$ has been increased to ease visibility of the field lines in the non-ideal layer.

These field lines are only meant to represent the field due to the enhanced poloidal current, and so, Fig. 16(b) shows the field lines of these current loops embedded in a straight field representing the guide field. Here, one can see that field lines that would not be in the rope without the loop currents have been bent into the rope. In reality, the enhanced J_p should exist along the entire length of the rope rather than being localized to the base of the rope. While this simplified model can reasonably describe the field-line bending in the non-ideal layer, it cannot be used above the current loop at $z = \Delta z$. Thus, while the additional lines are later bent back out of the rope, in reality we expect that the enhanced toroidal flux will be frozen into the rope.

Using the experimental values for a and the flux loop location in this model, we can predict the expected measured flux change (shown as an average field change, $\langle \Delta B \rangle$) as a function of I_{loop} and Δz , as shown in Fig. 17. For small separations where $\Delta z \ll a$, $\langle \Delta B \rangle$ is approximately linear and is described by

$$\langle \Delta B \rangle \text{ (G)} \approx -1.06 I_{loop} \text{ (kA)} \Delta z \text{ (cm)}, \quad (16)$$

where $\langle \Delta B \rangle$ is measured in G, I_{loop} is measured in kA, and Δz is measured in cm. As a rough estimate, we expect that $I_{loop} \lesssim 10$ kA since it should not be significantly larger than the toroidal current,

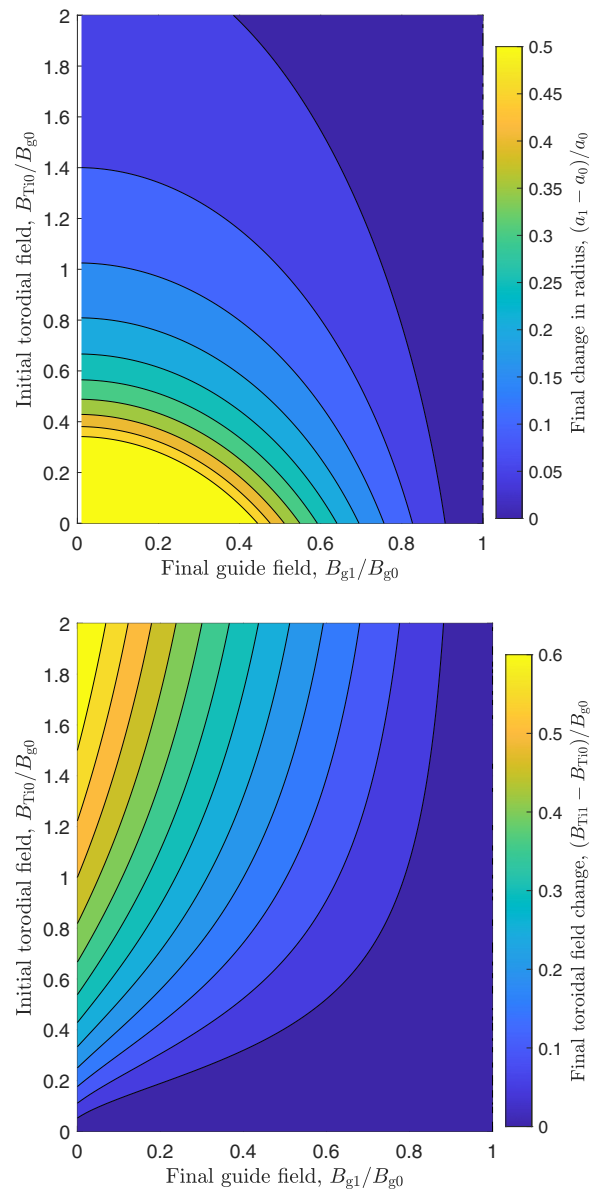


FIG. 15. Contour plots of the normalized change in the minor radius (top) and internal toroidal field (bottom) in a straight flux rope with decreasing guide field. When quantities are normalized to a_0 and B_{g0} , there are only two free parameters left, B_{g1} and B_{T10} , which are represented on the x and y axes, respectively. Since both quantities are non-negative, both the minor radius and internal toroidal field increase when the guide field is decreased.

$I_p \approx 12$ kA. As seen in Sec. VI, the measured change in flux by the flux loops is $\langle \Delta B \rangle \sim 2 - 5$ G. Based on these numbers, we expect that the non-ideal layer has a height of $\Delta z \sim 0.2$ cm. While this simplified model can only be trusted for an order-of-magnitude estimate of Δz , we can still compare the expected non-ideal based on the plasma parameters to this value.

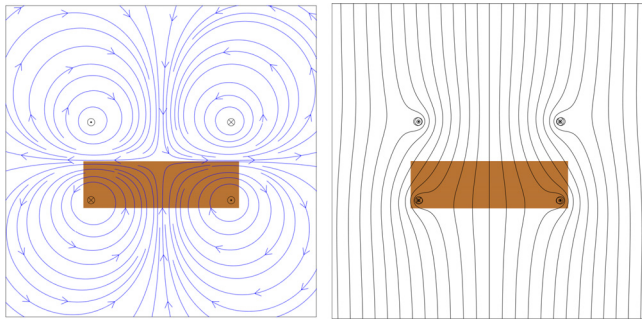


FIG. 16. Field lines of a current loop located Δz above the electrodes (shown in brown) along with an image current to maintain the frozen-in condition at $z=0$. Left: the field lines of just the current loops. Right: the current loops embedded in a background field in the z direction. The electrode thickness and the sheath thickness have both been exaggerated for clarity.

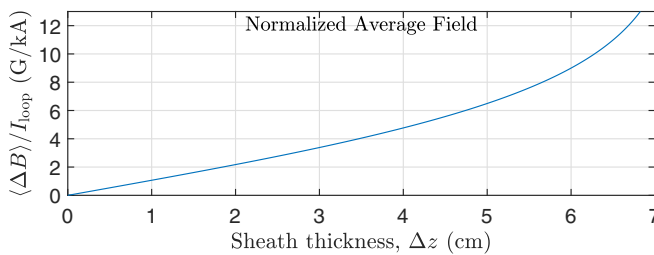


FIG. 17. Average field at the flux loops calculated from the current loop model and using the actual experimental geometry. The average field, $\langle \Delta B \rangle$, is normalized to the loop current, I_{loop} . The sheath thickness, Δz , sets the location of the current loop above the electrode. For $\Delta z \ll a_0$, this relation is approximately linear, where $a_0 = 7$ cm is the electrode radius.

D. Possible non-ideal layers between an MFR and electrode

We expect the non-ideal layer between the electrodes and the base of the flux rope to have a width of around $\Delta z \sim 0.2$ cm. Three potential layers will be considered, which are summarized in Table III. The simplest potential layer is a Debye sheath with a width based on the Debye length, $\lambda_D = \sqrt{\epsilon_0 T / (ne^2)}$, where ϵ_0 is the permittivity of

TABLE III. A comparison of the potential non-ideal layers considered for the region between the electrode and the ideal rope plasma. Values for both the experimental conditions and the photosphere are presented. Sources of anomalous resistivity and viscosity have not been considered.

Layer type	Experimental value	Solar value
Debye sheath $\lambda_D = \sqrt{\epsilon_0 T / (ne^2)}$	2×10^{-4} cm	1×10^{-4} cm
Hartmann layer $\delta_{Ha} = \sqrt{m_i n \nu \eta} / B$	0.35 cm	0.086 cm
Resistive layer $\delta_S = \eta \sqrt{\mu_0 m_i n} / B$	0.052 cm	2.1 cm

free space. However, based on the experimental parameters, $\lambda_D \approx 2 \times 10^{-4}$ cm, which is far too small to explain the expected non-ideal layer.

The Debye length describes the scale under which the quasi-neutrality approximation holds. However, we can consider the finite viscosity, ν , and resistivity, η , in our plasma to find a characteristic scale length under which the ideal MHD approximations are violated. One example of this is the Hartmann layer where magnetic forces are balanced by resistive and viscous forces as described by the Hartmann number $Ha = B\delta / \sqrt{m_i n \nu \eta}$, where δ is a characteristic scale length.^{38,39} In Hartmann flow of a magnetized plasma over a stationary surface, a characteristic length scale over which $\mathbf{J} \times \mathbf{B}$ forces are balanced by viscous and resistive forces is given by $\delta_{Ha} = \sqrt{m_i n \nu \eta} / B$. Based on our experimental plasma parameters, this length scale is $\delta_{Ha} \approx 0.35$ cm, which is similar to the expected Δz .

In addition to δ_{Ha} , we could consider a length scale where magnetic forces are balanced entirely by resistive forces. This scale can be found by considering the Lundquist number, $S = \mu_0 v_A \delta / \eta$. Similar to how δ_{Ha} is the length scale under which $Ha = 1$, we can find δ_S as a length scale where $S = 1$, $\delta_S = \eta \sqrt{\mu_0 m_i n} / B$. Based on our experimental plasma parameters, this length scale is $\delta_S \approx 0.052$ cm. This is slightly too small to explain the expected Δz , so we expect the Hartmann layer to be the significant cause of the non-ideal layer.

The solar length scales for these non-ideal layers are also presented in Table III. Compared to the typical length scales of solar MFRs, we see that these layers are all too small to be able to explain any significant flux change in a rope. However, we have only considered classical Spitzer resistivity and viscosity in these calculations. The addition of anomalous sources of resistivity and viscosity may increase the solar values significantly.

VII. EXPERIMENTALLY MEASURED CHANGES IN THE TOROIDAL FIELD PROFILE

The simple 1D straight flux rope model presented in Sec. VIB can help to explain the increase in $\Phi_{a,i}$. However, it fails to accurately predict the value of the enhanced tension force, F_t , because it assumes that the fields are constant in the rope. The F_t change we are interested in depends on the fields via Eq. (1). Since the relevant quantity is the average squared toroidal field, $\langle B_T^2 \rangle$, the exact profile is necessary to predict the changes in F_t .

To that end, we have analyzed the changes in $\langle B_T^2 \rangle$ and the predicted F_t during an example failed torus event in Fig. 18. Rather than defining the boundary of the rope by a fixed fraction of the total current, we have held the total toroidal flux, Φ_a , constant in time. This means that the new field lines that are added to the rope are not being considered in this analysis, but rather a consistent flux surface is being considered. As the rope rises, $\Phi_{a,v}$ decreases and $\Phi_{a,i}$ increases as expected. We also see that $\langle B_T^2 \rangle$ increases sharply during the collapse. This causes F_t [defined here via Eq. (1)] to increase dramatically, which in turn causes the rope to collapse and the eruption to fail. By comparing $\langle B_T[i]^2 \rangle$ and $\langle B_T[v]^2 \rangle$ separately in Fig. 18(c), we see that this increase is largely driven by the change in the internal profile rather than the decrease in B_g . The value of F_t increases by a factor of more than two from the initial state to the peak during the collapse. This is consistent with experimental measurements where F_t is calculated by integrating the $\mathbf{J} \times \mathbf{B}$ forces rather than using Eq. (1).¹⁵

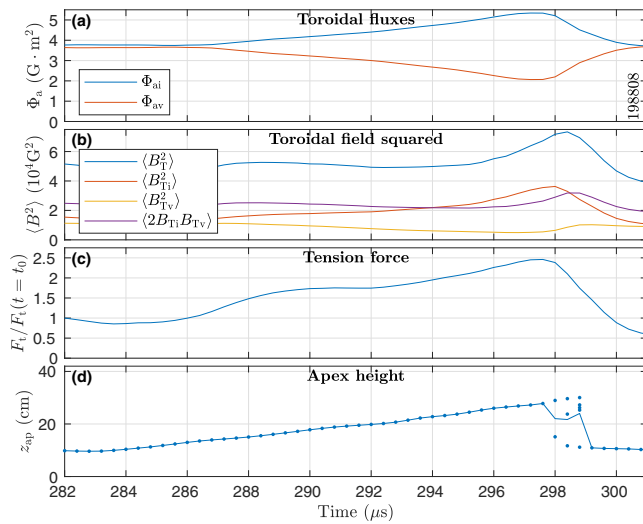


FIG. 18. Various rope parameters related to flux and field profile during a sample failed torus event. Here, the rope has been defined by a constant total toroidal flux, Φ_a rather than by the toroidal current. The tension force increases by a factor of more than two, consistent with experimental measurements of F_t . (a) The flux due to the vacuum and internal fields. (b) The average value of the square of the total toroidal field compared with the vacuum and internal values. (c) The tension force derived from $\langle B_T^2 \rangle$ normalized to the value at a reference time before the event. (d) The apex height for reference. During the failed torus event, the apex height is briefly multi-valued.

A. Effects of the kink instability on failed torus events

By analyzing the change in the tension force, F_t , in a rising MFR while holding the total toroidal flux at the apex, Φ_a , constant, we have shown that failed torus effects can be explained entirely by ideal MHD without the need for adding flux in a non-ideal layer. We are left with the question as to why these effects are absent in the eruptive regime (the lower left quadrant of Fig. 5) when the safety factor, q_w , is small. When a rope is kink-unstable, its axis is able to tilt in the x - y plane, mixing the roles of the strapping and guide fields. In particular, if a rope's axis is tilted an angle of θ , its effective strapping and guide fields would be

$$B_{s,\text{eff}} = B_y \cos \theta - B_x \sin \theta, \quad (17a)$$

$$B_{g,\text{eff}} = B_y \sin \theta + B_x \cos \theta, \quad (17b)$$

where B_y and B_x are, respectively, the strapping and guide fields when there is no tilt. The change in a rope's guide field becomes conflated with the change in strapping field, and so, the rope is able to erupt by slipping through the field lines in the arcade above it.

If instead a rope is kink-stable and cannot twist significantly, it must rise up through the arcade without tilting and experience a changing guide field based on the decay index of the guide field, n_g . In order to begin the rise, however, it must be initially unstable to the torus instability with $n_s > n_{cr}$ (limiting us to the upper right quadrant of Fig. 5). Then, when the guide field decays, the profile can change, enhancing F_t . However, this assumes that B_g decays fast enough for this effect to happen. For example, if $n_g = 0$, then B_g would be a constant and we would expect no F_t enhancement from these effects. This suggests that there may be a critical value of n_g where this effect could

happen; i.e., it occurs when $n_g > n_{g,\text{cr}}$. However, due to experimental constraints, we were not able to probe to sufficiently small values of n_g to see these effects. Furthermore, on the Sun, B_g is generated by external currents below the photosphere. Therefore, small values of n_g may not be realizable on the Sun either.

Additionally, the movement of the apex may not be small when considering the onset of the failed torus, so rather than using the local derivative (or equivalently, n_g), a finite difference should be considered instead. We empirically observe that the failed torus occurs when the change in guide field is around half of its initial value, i.e., $|\Delta B_g|/B_{g0} \sim 1/2$. For a given configuration with decaying B_g , this will occur at some finite displacement, Δz_{ap} , away from its initial apex height. The failed torus will be able to disrupt the eruption if Δz_{ap} is small enough such that some other non-ideal effects are not able to disrupt this mechanism. For example, once a rope rises far enough, tether-cutting reconnection can occur below the rope, disrupting the initial topology. This reasoning can lead to estimates for $n_{g,\text{cr}}$. However, due to the complexity of the fields and the onset of reconnection, and analytical solution is intractable and it warrants future numerical study.

B. Application to solar conditions

The toroidal flux increase seen in our experiments in Fig. 13 may not be possible in solar flux ropes. In our experiments, a non-ideal layer above the electrodes allows for field-line bending to increase the total flux in a rope. However, using classical values for resistivity and viscosity in the photosphere yields layers that are far too small to contribute a significant amount of flux (see Table III). Despite the lack of flux increase, the results of Sec. VII and Fig. 18 show that redistribution of B_{T1} can account for a significant increase in F_t without any increase in Φ_a . Since F_t depends on $\langle B_T^2 \rangle$ rather than the total flux, F_t can be increased by making B_T less uniform; i.e., a B_T profile that is either more peaked or more hollow will increase $\langle B_T^2 \rangle$.

We have discussed the differing roles of n_s and n_g in the onset of the torus instability and subsequent failed torus events and how these roles get mixed when kinking occurs at the apex. n_s is important for driving the torus instability, while n_g can cause the necessary changes to create a failed torus and end the eruption. However, this may prove challenging for future predictions of solar events because observations are often unable to determine the direction of measured magnetic fields and, therefore, cannot independently measure n_s and n_g .⁴⁰

VIII. DISCUSSION AND CONCLUSIONS

The prediction of space weather requires a detailed understanding of the ideal MHD behavior of arched, line-tied, magnetic flux ropes. Models that are widely used to describe the behavior of toroidally symmetric systems, such as tokamaks break down when extended to the line-tied system of an MFR. Laboratory experiments have been carried out to investigate the behavior of ideal MHD instabilities, particularly the torus instability, in MFRs.

In addition to the standard torus instability occurring at small values of q_w , a class of failed torus MFRs that were torus-unstable but kink-stable were observed failing to erupt.¹⁵ These ropes often begin to rise due to the torus instability, but then the current profile becomes hollow, the toroidal field (and therefore the tension force) is increased, and the eruption ultimately fails. We have investigated the energy inventory before and after these events and found that ideal MHD can

explain the energy change to within 6%, well within experimental error. In reversed field pinches, Taylor relaxation is often considered as the mechanism through which the current profile can change, resulting in a flat twist density profile, $\alpha = J \cdot B / (\mu_0 B^2)$.¹⁶ However, Taylor relaxation only conserves the total helicity and not the helicity of each flux surface. This means that internal reconnection (and therefore non-ideal MHD effects) is required for the plasma to reach its lowest energy state. This means that Taylor relaxation cannot be the cause of the current profile change in failed torus ropes.

By measuring the current distribution at the foot points during failed torus events, we have confirmed that the current redistribution is a global phenomenon and not localized to the apex where previous measurements were focused. We have also seen that, in our experiments, the total toroidal flux, Φ_a , at the apex of a failed torus rope increases as it rises during an event. We have developed a model for how this can occur without violating the ideal MHD assumptions in the bulk of the rope. As a rope rises, the external guide field, B_g , at the apex decreases. This causes the poloidal current, J_p , to increase away from the center. The resulting currents interacting with the frozen-in condition at the conducting electrodes cause flux to be pulled into the rope through a thin non-ideal layer above the electrodes. The current is able to cross field lines in this layer, and therefore, new field lines are added to the rope, increasing Φ_a . This flux increase then causes the tension force, F_t , to increase, ultimately causing the eruption to fail. The expected flux changes during these events have been confirmed by measurements of flux loops placed below the electrodes.

Additionally, changes in the toroidal field profile have been measured during failed torus events in our experiments. The changes in $\langle B_T^2 \rangle$ when holding Φ_a constant have been shown to be significant enough to cause F_t to increase by a factor of more than two. Due to the thin non-ideal layers on the Sun, this redistribution mechanism is expected to be far more significant for solar flux ropes than any Φ_a increase. This mechanism for failed eruptions could be used to predict failed CME events on the Sun.

ACKNOWLEDGMENTS

The authors would like to thank P. Sloboda and A. Jones for their help with the experimental setup. This research was supported by Department of Energy Contract Nos. DE-SC0019049 and DE-AC02-09CH11466 and NASA Grant No. 80HQTR17T0005.

AUTHOR DECLARATIONS

Conflict of Interest

The authors have no conflicts to disclose.

Author Contributions

Andrew Alt: Conceptualization (equal); Formal analysis (lead); Investigation (lead); Writing – original draft (lead); Writing – review & editing (equal). **Hantao Ji:** Conceptualization (equal); Formal analysis (supporting); Supervision (equal); Writing – review & editing (equal). **Jongsoo Yoo:** Formal analysis (supporting); Writing – review & editing (equal). **Sayak Bose:** Formal analysis (supporting); Writing – review & editing (equal). **Aaron Goodman:** Formal analysis (supporting); Writing – review & editing (equal). **Masaaki Yamada:** Formal analysis (supporting); Supervision (equal); Writing – review & editing (equal).

DATA AVAILABILITY

The data that support the findings of this study will be made available via Princeton University’s data repository upon publication, Ref. 41.

APPENDIX: CONSERVATION OF ENERGY IN A FLUX ROPE UNDER IDEAL MHD

We would like to analyze the energy inventory of an MFR before and after an eruptive or failed torus event. We will consider the energy equation using the assumptions of ideal MHD and then will compare to our experimental results in Sec. IV C.⁴² The agreement (or disagreement) will help to validate (or invalidate) our assumptions. A substantial difference in the energy between the experiment and theory would indicate the need for non-ideal processes such as reconnection to explain the events.

The conservative form of the ideal MHD energy equation is given by Freidberg⁴³

$$\frac{\partial F_i}{\partial z} tw + \nabla \cdot s = 0, \tag{A1}$$

where w and s are given by

$$w = \frac{1}{2} \rho v^2 + \frac{P}{\gamma - 1} + \frac{B^2}{2\mu_0}, \tag{A2a}$$

$$s = \left(\frac{1}{2} \rho v^2 + \frac{P}{\gamma - 1} \right) v + Pv + \frac{1}{\mu_0} E \times B, \tag{A2b}$$

where ρ is the plasma mass density, P is the plasma pressure, E is the electric field, γ is the adiabatic index, and v is the plasma velocity. The terms in w represent the density of the kinetic energy, the internal energy, and the magnetic energy, respectively, whereas the terms of s represent the flux of energy density (both kinetic and internal), the compressive work done on the plasma, and the Poynting vector, respectively. We will be assuming ideal MHD holds and so will use the ideal form of Ohm’s law

$$E + v \times B = 0, \tag{A3}$$

i.e., we will assume that there is no resistivity.

The total energy in the system is given by

$$W = \int_V w d^3r, \tag{A4}$$

where the integral is carried out over the entire plasma volume, V . We then take a time-derivative of this equation

$$\frac{dW}{dt} = \int_V \frac{\partial F_i}{\partial z} tw d^3r + \int_S wv \cdot dS, \tag{A5}$$

where S is the surface of the plasma volume. The surface, S , moves with the plasma velocity, v , and so, the rate of change of the volume is given by

$$\frac{dV}{dt} = \int_S v \cdot dS. \tag{A6}$$

We can then substitute Eqs. (A1) and (A2) into Eq. (A5) and use Eq. (A3) to get (see Alt¹⁸ for a more detailed derivation)

$$\frac{dW}{dt} = - \int_S (s - wv) \cdot dS = - \int_S \left(P + \frac{B^2}{2\mu_0} \right) v \cdot dS. \tag{A7}$$

This equation implies that the change in total energy in the system is equivalent to the work done by compression of both the thermal and magnetic pressures.

REFERENCES

- ¹T. Forbes, *J. Geophys. Res.* **105**, 23153, <https://doi.org/10.1029/2000JA000005> (2000).
- ²J. Chen, *Phys. Plasmas* **24**, 090501 (2017).
- ³L. M. Green, T. Török, B. Vršnak, W. Manchester IV, and A. Veronig, *Space Sci. Rev.* **214**, 46 (2018).
- ⁴T. Pulkkinen, *Living Rev. Sol. Phys.* **4**, 1 (2007).
- ⁵National Research Council, *Solar and Space Physics: A Science for a Technological Society* (National Academies Press, 2013).
- ⁶N. Crooker, J. A. Joselyn, and J. Feynman, *Coronal Mass Ejections* (American Geophysical Union Geophysical Monograph Series, Washington, DC, 1997), Vol. 99.
- ⁷L. M. Green and B. Kliem, *Astrophys. J., Lett.* **700**, L83 (2009).
- ⁸M. Kuperus and M. A. Raadu, *Astron. Astrophys.* **31**, 189 (1974).
- ⁹J. Chen, *Astrophys. J.* **338**, 453 (1989).
- ¹⁰D. M. Rust, *Adv. Space Res.* **32**, 1895 (2003).
- ¹¹M. D. Kruskal and M. Schwarzschild, *Proc. R. Soc. A* **223**, 348 (1954).
- ¹²G. Bateman, *MHD Instabilities* (MIT Press, 1978).
- ¹³T. Török, B. Kliem, and V. S. Titov, *Astron. Astrophys.* **413**, L27 (2004).
- ¹⁴B. Kliem and T. Török, *Phys. Rev. Lett.* **96**, 255002 (2006).
- ¹⁵C. E. Myers, M. Yamada, H. Ji, J. Yoo, W. Fox, J. Jara-Almonte, A. Savcheva, and E. E. DeLuca, *Nature* **528**, 526 (2015).
- ¹⁶J. B. Taylor, *Phys. Rev. Lett.* **33**, 1139 (1974).
- ¹⁷C. E. Myers, M. Yamada, H. Ji, J. Yoo, J. Jara-Almonte, and W. Fox, *Phys. Plasmas* **23**, 112102 (2016).
- ¹⁸A. Alt, “Laboratory study of the stability of solar-relevant, arched, line-tied magnetic flux ropes,” Ph.D. thesis (Princeton University, 2022).
- ¹⁹T. G. Forbes and P. A. Isenberg, *Astrophys. J.* **373**, 294 (1991).
- ²⁰The decay index is defined such that a field, $B \propto z^{-n}$ has a decay index of n .
- ²¹A. Alt, C. E. Myers, H. Ji, J. Jara-Almonte, J. Yoo, S. Bose, A. Goodman, M. Yamada, B. Kliem, and A. Savcheva, *Astrophys. J.* **908**, 41 (2021).
- ²²V. D. Shafranov, *Sov. J. At. Energy* **1**, 709 (1956).
- ²³C. E. Myers, M. Yamada, H. Ji, J. Yoo, J. Jara-Almonte, and W. Fox, *Plasma Phys. Controlled Fusion* **59**, 014048 (2017).
- ²⁴M. A. Berger and G. B. Field, *J. Fluid Mech.* **147**, 133 (1984).
- ²⁵J. B. Taylor, *Rev. Mod. Phys.* **58**, 741 (1986).
- ²⁶M. Yamada, H. Ji, S. Hsu, T. Carter, R. Kulsrud, N. Bretz, F. Jobses, Y. Ono, and F. Perkins, *Phys. Plasmas* **4**, 1936 (1997).
- ²⁷L. A. Kojovic, in *IEEE Power Engineering Society General Meeting* (IEEE, 2003), Vol. 2, pp. 609–614.
- ²⁸J. Yoo, “Experimental studies of particle acceleration and heating during magnetic reconnection,” Ph.D. thesis (Princeton University, 2013).
- ²⁹The specific value of z_{trig} is not important to the final results as long as it falls within the range of most events.
- ³⁰Due largely to experimental constraints, we have chosen to neglect the ion pressure in this equation. The consequences of this are discussed in Sec. IV C.
- ³¹E. Oz, C. E. Myers, M. Yamada, H. Ji, R. M. Kulsrud, and J. Xie, *Phys. Plasmas* **18**, 102107 (2011).
- ³²D. Ryutov, I. Furno, T. Intrator, S. Abbate, and T. Madziwa-Nussinov, *Phys. Plasmas* **13**, 032105 (2006).
- ³³H. Ji, S. Prager, and J. S. Sarff, *Phys. Rev. Lett.* **74**, 2945 (1995).
- ³⁴Since the total plasma current is constant, the decrease of the center currents also implies an increase to the current of the outer ring.
- ³⁵The amount of field line bending allowed is examined via a simplified model in Sec. VI C.
- ³⁶We have assumed zero β so the internal energy cannot change and have neglected changes in the poloidal magnetic field energy. A poloidal energy term can be added to the LHS of Eq. (13), however this term is generally negative for an arched MFR and increases the resulting B_{T1} .
- ³⁷In general, $W_{\text{comp.g}}$ will depend on the form of $B_g(V)$. If one assumes an ansatz of $B_g = \alpha V^{-n}$ for some α and $n > 1$, then the RHS of Eq. (13b) is multiplied by $1/(2n - 1)$. This changes the specific values but not the general conclusions of this section. The condition of $n > 1$ is equivalent to the rope expanding slower than a vacuum rope with $B_{T1} = 0$.
- ³⁸J. Hartmann and F. Lazarus, *Experimental Investigations on the Flow of Mercury in a Homogeneous Magnetic Field* (Munksgaard, 1937).
- ³⁹R. J. Lingwood and T. Alboussiere, *Phys. Fluids* **11**, 2058 (1999).
- ⁴⁰Y. Liu, *Astrophys. J., Lett.* **679**, L151 (2008).
- ⁴¹A. Alt, H. Ji, J. Yoo, S. Bose, A. Goodman, and M. Yamada, “Laboratory study of the failed torus mechanism in arched, line-tied, magnetic flux ropes,” [arXiv:2301.08773](https://arxiv.org/abs/2301.08773) (2023).
- ⁴²The ideal MHD equations presented in this section neglect thermal conduction by assuming an adiabatic equation of state. However, the adiabatic assumption is confirmed to be valid in our experiments during the timescales discussed in Sec. IV C.
- ⁴³J. P. Freidberg, *Ideal MHD* (Cambridge University Press, 2014).